



TAF1C Rabbit mAb

Catalog No	YP-rAb-17679
Isotype	IgG
Reactivity	Human
Applications	WB,IP
Gene Name	TAF1C
Protein Name	TATA box-binding protein-associated factor RNA polymerase I subunit C;RNA polymerase I-specific TBP-associated factor 110 kDa;TAFI110;TATA box-binding protein-associated factor 1C;TBP-associated factor 1C;Transcription initiation factor SL1/TIF-IB subunit C;
Purification Process	Protein A
Specificity	Endogenous
Formulation	PBS, 50% glycerol, 0.05% Proclin 300, 0.05%BSA
Source	Monoclonal, Rabbit,IgG
Dilution	WB 1:1000-5000; IP 1:50-100
Concentration	0.5 mg/ml
Purity	≥90%
Storage Stability	-15° C to -25° C/1 year(Do not lower than -25° C)
Synonyms	TAF1C ; TATA box-binding protein-associated factor RNA polymerase I subunit C ; RNA polymerase I-specific TBP-associated factor 110 kDa ; TAFI110 ; TATA box-binding protein-associated factor 1C ; TBP-associated factor 1C ; Transcription initiation factor SL1/TIF-IB subunit C ;
Observed Band	96kD
Calculated Molecular Weight	
Cell Pathway	Nucleus, nucleolus.
Tissue Specificity	
Function	Component of the transcription factor SL1/TIF-IB complex, which is involved in the assembly of the PIC (pre-initiation complex) during RNA polymerase I-dependent transcription. The rate of PIC formation probably is primarily dependent on the rate of association of SL1/TIF-IB with the rDNA promoter. SL1/TIF-IB is involved in stabilization of nucleolar transcription factor 1/UBTF on rDNA. Formation of SL1/TIF-IB excludes the association of TBP with TFIID subunits. Recruits RNA polymerase I to the rRNA gene promoter via interaction





with RRN3. {ECO:0000269|PubMed:11250903,
ECO:0000269|PubMed:11283244, ECO:0000269|PubMed:15970593}.

Background

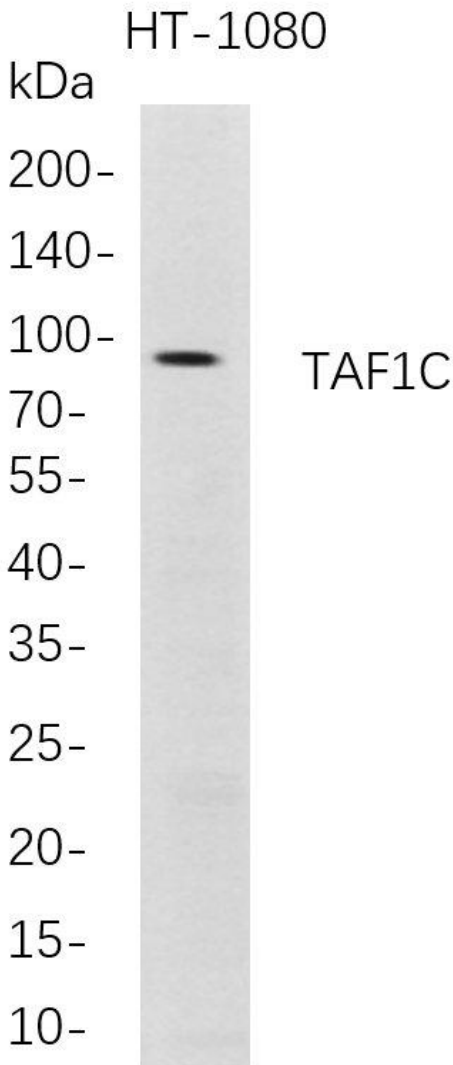
Initiation of transcription by RNA polymerase I requires the formation of a complex composed of the TATA-binding protein (TBP) and three TBP-associated factors (TAFs) specific for RNA polymerase I. This complex, known as SL1, binds to the core promoter of ribosomal RNA genes to position the polymerase properly and acts as a channel for regulatory signals. This gene encodes the largest SL1-specific TAF. Multiple alternatively spliced transcript variants encoding different isoforms have been identified. [provided by RefSeq, Jul 2011]

matters needing attention

Avoid repeated freezing and thawing!

Usage suggestions

This product can be used in immunological reaction related experiments. For more information, please consult technical personnel.



Western Blot analysis of HT-1080 whole cell lysates were separated by 4-20% SDS-PAGE, and the membrane was blotted with anti-TAF1C rabbit mAb. The HRP-conjugated Goat anti-Rabbit IgG(H + L) antibody was used to detect the antibody.

