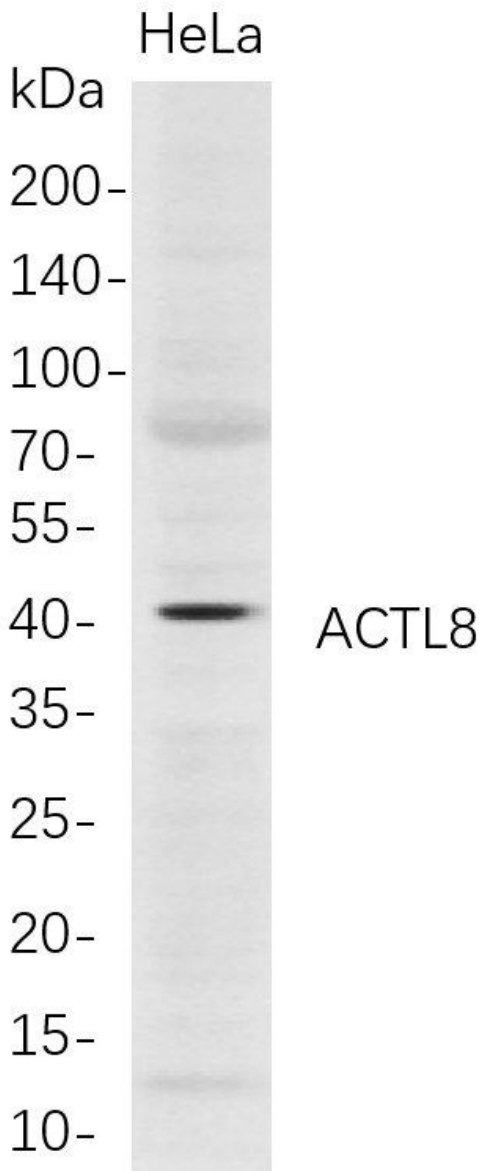




# ACTL8 Rabbit mAb

<b>Catalog No</b>	YP-rAb-17674
<b>Isotype</b>	IgG
<b>Reactivity</b>	Human
<b>Applications</b>	WB,FC,IP
<b>Gene Name</b>	ACTL8
<b>Protein Name</b>	Actin-like protein 8;Cancer/testis antigen 57;CT57;
<b>Purification Process</b>	Protein A
<b>Specificity</b>	Endogenous
<b>Formulation</b>	PBS, 50% glycerol, 0.05% Proclin 300, 0.05%BSA
<b>Source</b>	Monoclonal, Rabbit,IgG
<b>Dilution</b>	WB 1:1000-5000; FC 1:100-300; IP 1:50-100
<b>Concentration</b>	0.5 mg/ml
<b>Purity</b>	≥90%
<b>Storage Stability</b>	-15° C to -25° C/1 year(Do not lower than -25° C)
<b>Synonyms</b>	ACTL8 ; Actin-like protein 8 ; Cancer/testis antigen 57 ; CT57 ;
<b>Observed Band</b>	40kD
<b>Calculated Molecular Weight</b>	
<b>Cell Pathway</b>	Cytoplasm, cytoskeleton.
<b>Tissue Specificity</b>	Strongly expressed in testis and pancreas. Weak expression in placenta. {ECO:0000269 PubMed:15905330}.
<b>Function</b>	
<b>Background</b>	Involved in epithelial cell differentiation. Predicted to be located in cytoplasm and cytoskeleton. Predicted to be active in actin filament; stress fiber; and striated muscle thin filament. [provided by Alliance of Genome Resources, Feb 2025]
<b>matters needing attention</b>	Avoid repeated freezing and thawing!
<b>Usage suggestions</b>	This product can be used in immunological reaction related experiments. For more information, please consult technical personnel.





Western Blot analysis of HeLa whole cell lysates were separated by 4-20% SDS-PAGE, and the membrane was blotted with anti-ACTL8 rabbit mAb. The HRP-conjugated Goat anti-Rabbit IgG(H + L) antibody was used to detect the antibody.

