



# KCTD3 Rabbit mAb

<b>Catalog No</b>	YP-rAb-17672
<b>Isotype</b>	IgG
<b>Reactivity</b>	Human
<b>Applications</b>	WB
<b>Gene Name</b>	KCTD3
<b>Protein Name</b>	BTB/POZ domain-containing protein KCTD3;Renal carcinoma antigen NY-REN-45;
<b>Purification Process</b>	Protein A
<b>Specificity</b>	Endogenous
<b>Formulation</b>	PBS, 50% glycerol, 0.05% Proclin 300, 0.05%BSA
<b>Source</b>	Monoclonal, Rabbit,IgG
<b>Dilution</b>	WB 1:1000-5000
<b>Concentration</b>	0.5 mg/ml
<b>Purity</b>	≥90%
<b>Storage Stability</b>	-15° C to -25° C/1 year(Do not lower than -25° C)
<b>Synonyms</b>	KCTD3 ; BTB/POZ domain-containing protein KCTD3 ; Renal carcinoma antigen NY-REN-45 ;
<b>Observed Band</b>	90kD
<b>Calculated Molecular Weight</b>	
<b>Cell Pathway</b>	Cell membrane.
<b>Tissue Specificity</b>	Broadly expressed in normal tissues. {ECO:0000269 PubMed:10508479}.
<b>Function</b>	Accessory subunit of potassium/sodium hyperpolarization-activated cyclic nucleotide-gated channel 3 (HCN3) up-regulating its cell-surface expression and current density without affecting its voltage dependence and kinetics. {ECO:0000250 UniProtKB:Q8BFX3}.
<b>Background</b>	This gene encodes a member of the potassium channel tetramerization-domain containing (KCTD) protein family. Members of this protein family regulate the biophysical characteristics of ion channels. In mouse, this protein interacts with hyperpolarization-activated cyclic nucleotide-gated channel complex 3 and enhances its cell surface expression and current density. Alternative splicing results in multiple transcript variants. [provided by RefSeq, Feb 2016],



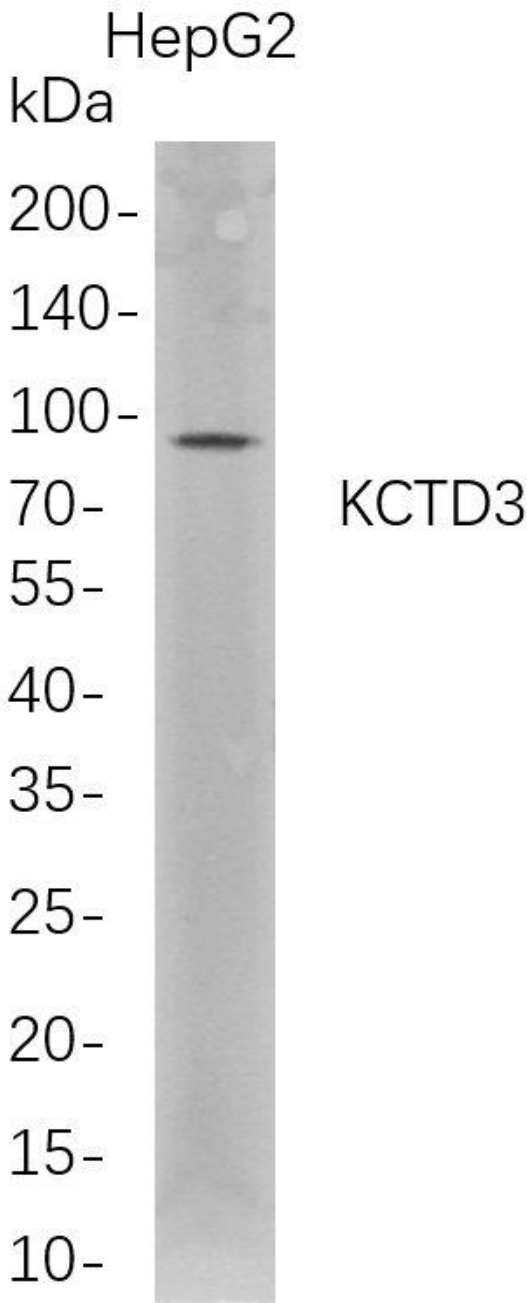


**matters needing attention**

Avoid repeated freezing and thawing!

**Usage suggestions**

This product can be used in immunological reaction related experiments. For more information, please consult technical personnel.



Western Blot analysis of HepG2 whole cell lysates were separated by 4-20% SDS-PAGE, and the membrane was blotted with anti-KCTD3 rabbit mAb. The HRP-conjugated Goat anti-Rabbit IgG(H + L) antibody was used to detect the antibody.

