



DPEP3 Rabbit mAb

Catalog No	YP-rAb-17668
Isotype	IgG
Reactivity	Human
Applications	WB,IHC,IP
Gene Name	DPEP3;UNQ834/PRO1772
Protein Name	Dipeptidase 3
Purification Process	Protein A
Specificity	Endogenous
Formulation	PBS, 50% glycerol, 0.05% Proclin 300, 0.05%BSA
Source	Monoclonal, Rabbit,IgG
Dilution	WB 1:1000-5000; IHC 1:100-300; IP 1:50-100 Note: For IHC, we suggest antigen retrieval with TE buffer pH 9.0
Concentration	0.5 mg/ml
Purity	≥90%
Storage Stability	-15° C to -25° C/1 year(Do not lower than -25° C)
Synonyms	DPEP3 ; UNQ834/PRO1772 ; Dipeptidase 3 ;
Observed Band	54kD
Calculated Molecular Weight	
Cell Pathway	Membrane; Lipid-anchor, GPI-anchor.
Tissue Specificity	
Function	Lacks dipeptidase activity and is unable to hydrolyze cystinyl-bis-glycine, leukotriene D4 and the beta-lactam antibiotic imipenem (PubMed:32325220). The absence of activity may be due to the inability of asparagine (instead of aspartate found in DPEP1/2) at position 359 to function as the acid/base catalyst and activate the nucleophilic water/hydroxide (PubMed:32325220). A tyrosine (instead of histidine) at position 269 reduces affinity for the beta zinc and may cause substrate steric hindrance (PubMed:32325220). {ECO:0000269 PubMed:32325220}.
Background	This gene encodes a membrane-bound glycoprotein from the family of dipeptidases involved in hydrolytic metabolism of various dipeptides, including penem and carbapenem beta-lactam antibiotics. This gene is located on chromosome 16 in a cluster with another member of this family. Alternatively





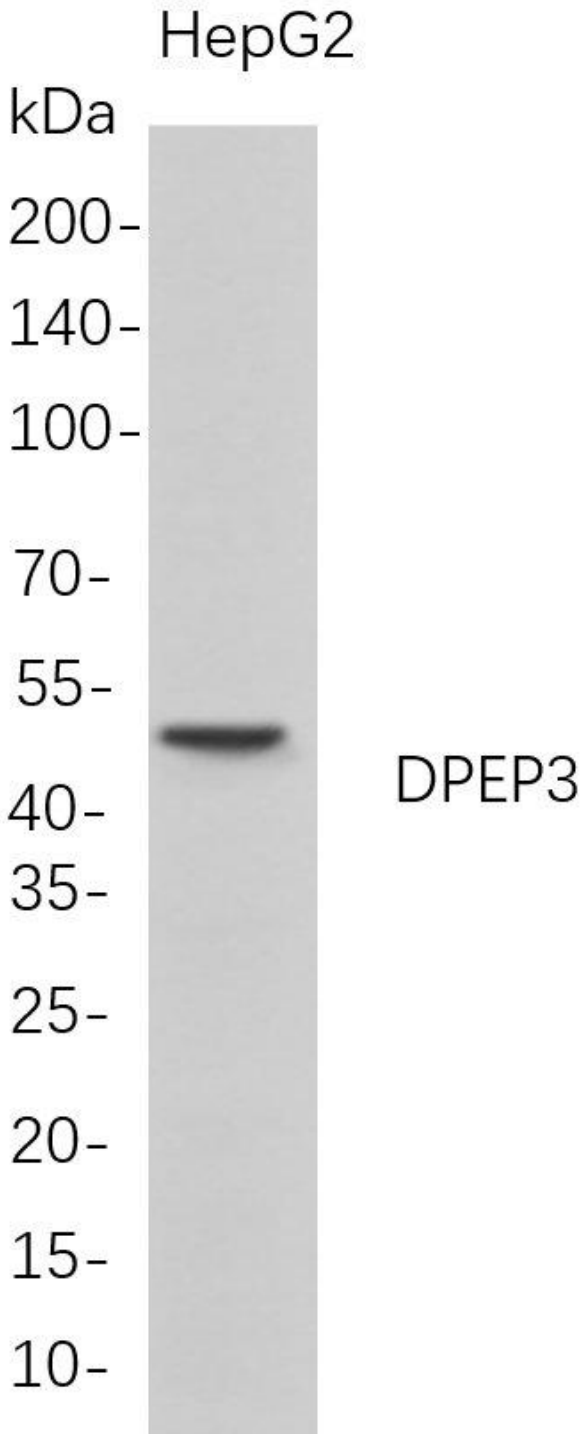
spliced transcript variants that encode different isoforms have been found for this gene. [provided by RefSeq, Jul 2008]

matters needing attention

Avoid repeated freezing and thawing!

Usage suggestions

This product can be used in immunological reaction related experiments. For more information, please consult technical personnel.



Western Blot analysis of HepG2 whole cell lysates were separated by 4-20% SDS-PAGE, and the membrane was blotted with anti-DPEP3 rabbit mAb. The HRP-conjugated Goat anti-Rabbit IgG(H + L) antibody was used to detect the antibody.





杭州臻优品生物科技有限公司

热销产品:

蛋白、一抗、抗体对、ELISA试剂盒、生化试剂盒
CCK8试剂盒、QPCR检测试剂盒

检测服务:

ELISA检测及定制服务 | 生化检测 | PCR、QPCR检测 | WB检测
ICO-IP检测 | 切片 | 染色 | 免疫组化 | 免疫荧光 | 透射电镜全套
| 宏基因组、转录组、基因组、蛋白组、代谢组测序



关注官网



关注客服