



ACTR1B Rabbit mAb

Catalog No	YP-rAb-17667
Isotype	IgG
Reactivity	Human
Applications	WB,IHC,IF,ICC,FC,IP
Gene Name	ACTR1B;CTRN2
Protein Name	Beta-centractin;Actin-related protein 1B;ARP1B;
Purification Process	Protein A
Specificity	Endogenous
Formulation	PBS, 50% glycerol, 0.05% Proclin 300, 0.05%BSA
Source	Monoclonal, Rabbit,IgG
Dilution	WB 1:1000-5000; IHC 1:100-300; ICC/IF 1:100-300; FC 1:100-300; IP 1:50-100 Note: For IHC, we suggest antigen retrieval with TE buffer pH 9.0
Concentration	0.5 mg/ml
Purity	≥90%
Storage Stability	-15° C to -25° C/1 year(Do not lower than -25° C)
Synonyms	ACTR1B ; CTRN2 ; Beta-centractin ; Actin-related protein 1B ; ARP1B ;
Observed Band	41kD
Calculated Molecular Weight	
Cell Pathway	Cytoplasm, cytoskeleton. Cytoplasm, cytoskeleton, microtubule organizing center, centrosome.
Tissue Specificity	
Function	Component of a multi-subunit complex involved in microtubule based vesicle motility. It is associated with the centrosome.
Background	This gene encodes a 42.3 kD subunit of dynactin, a macromolecular complex consisting of 10 subunits ranging in size from 22 to 150 kD. Dynactin binds to both microtubules and cytoplasmic dynein and is involved in a diverse array of cellular functions, including ER-to-Golgi transport, the centripetal movement of lysosomes and endosomes, spindle formation, chromosome movement, nuclear positioning, and axonogenesis. This subunit, like ACTR1A, is an actin-related protein. These two proteins, which are of equal length and share 90% amino acid identity, are present in a constant ratio of approximately 1:15 in the dynactin complex. [provided by RefSeq, Aug 2008],



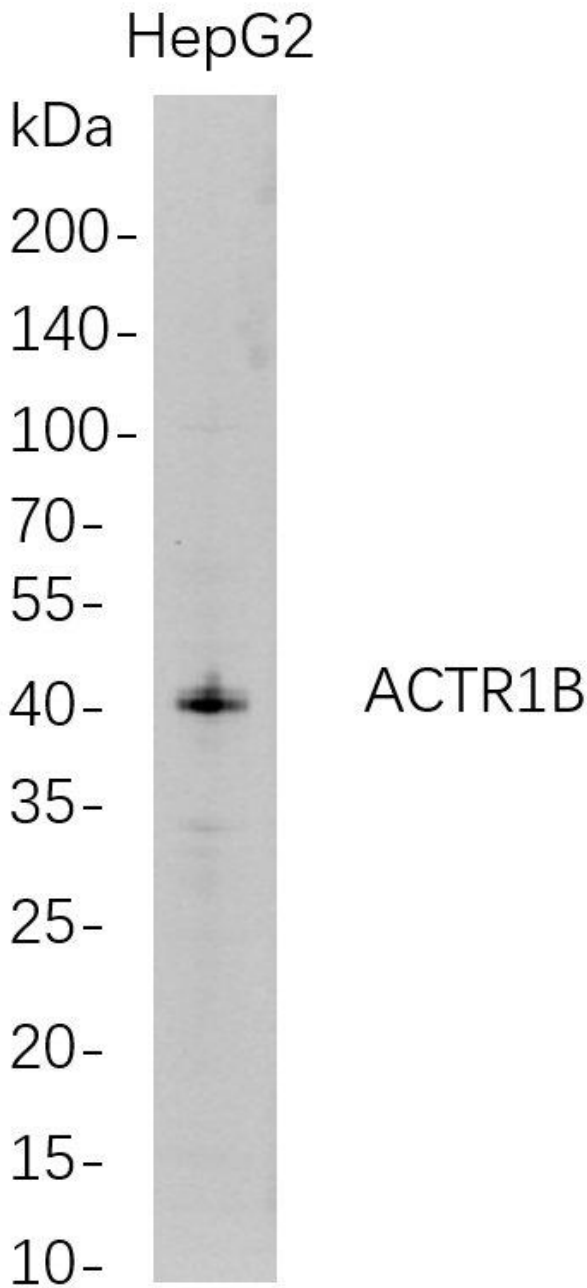


matters needing attention

Avoid repeated freezing and thawing!

Usage suggestions

This product can be used in immunological reaction related experiments. For more information, please consult technical personnel.



Western Blot analysis of HepG2 whole cell lysates were separated by 4-20% SDS-PAGE, and the membrane was blotted with anti-ACTR1B rabbit mAb. The HRP-conjugated Goat anti-Rabbit IgG(H + L) antibody was used to detect the antibody.

