



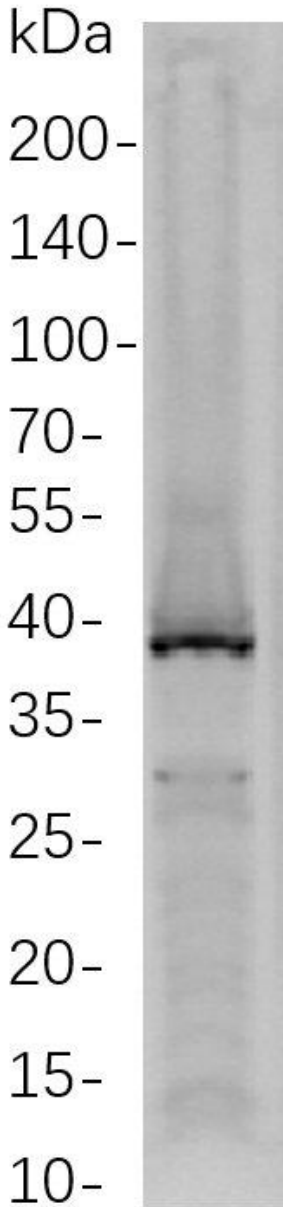
RBM43 Rabbit mAb

| | |
|------------------------------------|---|
| Catalog No | YP-rAb-17666 |
| Isotype | IgG |
| Reactivity | Human |
| Applications | WB |
| Gene Name | RBM43;C2orf38 |
| Protein Name | RNA-binding protein 43;RNA-binding motif protein 43; |
| Purification Process | Protein A |
| Specificity | Endogenous |
| Formulation | PBS, 50% glycerol, 0.05% Proclin 300, 0.05%BSA |
| Source | Monoclonal, Rabbit,IgG |
| Dilution | WB 1:1000-5000 |
| Concentration | 0.5 mg/ml |
| Purity | ≥90% |
| Storage Stability | -15° C to -25° C/1 year(Do not lower than -25° C) |
| Synonyms | RBM43 ; C2orf38 ; RNA-binding protein 43 ; RNA-binding motif protein 43 ; |
| Observed Band | 39kD |
| Calculated Molecular Weight | |
| Cell Pathway | |
| Tissue Specificity | |
| Function | |
| Background | Predicted to enable RNA binding activity. [provided by Alliance of Genome Resources, Feb 2025] |
| matters needing attention | Avoid repeated freezing and thawing! |
| Usage suggestions | This product can be used in immunological reaction related experiments. For more information, please consult technical personnel. |





A549



RBM43

Western Blot analysis of A549 whole cell lysates were separated by 4-20% SDS-PAGE, and the membrane was blotted with anti-RBM43 rabbit mAb. The HRP-conjugated Goat anti-Rabbit IgG(H + L) antibody was used to detect the antibody.

