



CSHL1 Rabbit mAb

Catalog No	YP-rAb-17665
Isotype	IgG
Reactivity	Human
Applications	WB,IHC
Gene Name	CSHL1;CSHP1;CSL
Protein Name	Chorionic somatomammotropin hormone-like 1;Chorionic somatomammotropin-like;Lactogen-like;
Purification Process	Protein A
Specificity	Endogenous
Formulation	PBS, 50% glycerol, 0.05% Proclin 300, 0.05%BSA
Source	Monoclonal, Rabbit,IgG
Dilution	WB 1:1000-5000; IHC 1:100-300 Note: For IHC, we suggest antigen retrieval with TE buffer pH 9.0
Concentration	0.5 mg/ml
Purity	≥90%
Storage Stability	-15° C to -25° C/1 year(Do not lower than -25° C)
Synonyms	CSHL1 ; CSHP1 ; CSL ; Chorionic somatomammotropin hormone-like 1 ; Chorionic somatomammotropin-like ; Lactogen-like ;
Observed Band	24kD
Calculated Molecular Weight	
Cell Pathway	Secreted.
Tissue Specificity	
Function	May be a novel gestational hormone required to compensate for absence of other members of the GH/CS cluster during gestation. {ECO:0000269 PubMed:8083227}.
Background	The protein encoded by this gene is a member of the somatotropin/prolactin family of hormones which play an important role in growth control. The gene, along with four other related genes, is located at the growth hormone locus on chromosome 17 where they are interspersed in the same transcriptional orientation; an arrangement which is thought to have evolved by a series of gene duplications. Although the five genes share a remarkably high degree of sequence identity, they are expressed selectively in different tissues. This particular family member is expressed in placental villi, although it was originally thought to be a





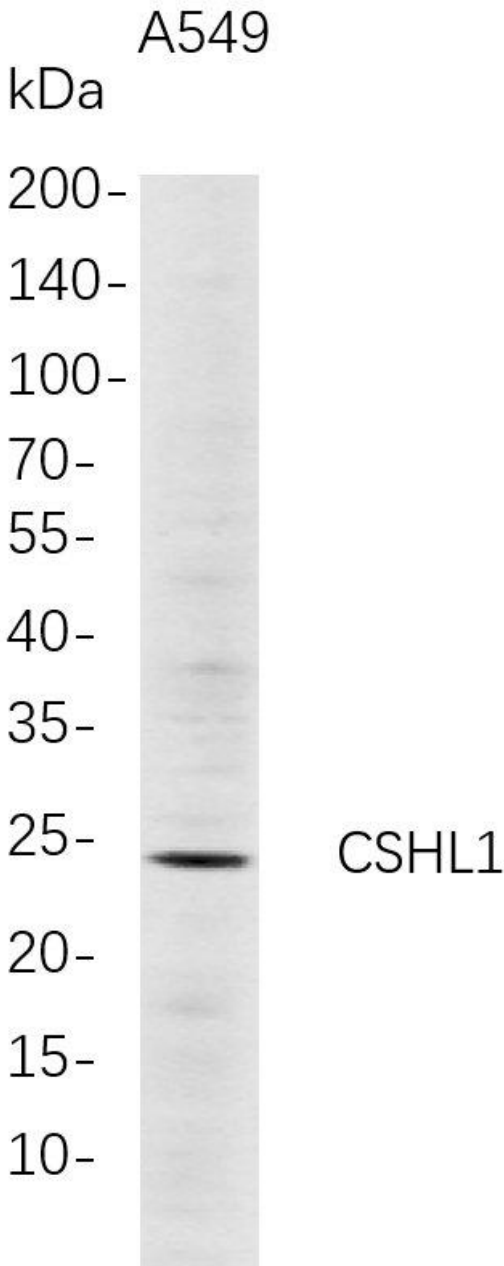
pseudogene. In fact, alternative splicing suggests that the majority of the transcripts would be unable to express a secreted protein. Alternatively spliced transcript variants encoding different isoforms have been identified. [provided by RefSeq, Jul 2008]

matters needing attention

Avoid repeated freezing and thawing!

Usage suggestions

This product can be used in immunological reaction related experiments. For more information, please consult technical personnel.



Western Blot analysis of A549 whole cell lysates were separated by 4-20% SDS-PAGE, and the membrane was blotted with anti-CSHL1 rabbit mAb. The HRP-conjugated Goat anti-Rabbit IgG(H + L) antibody was used to detect the antibody.

