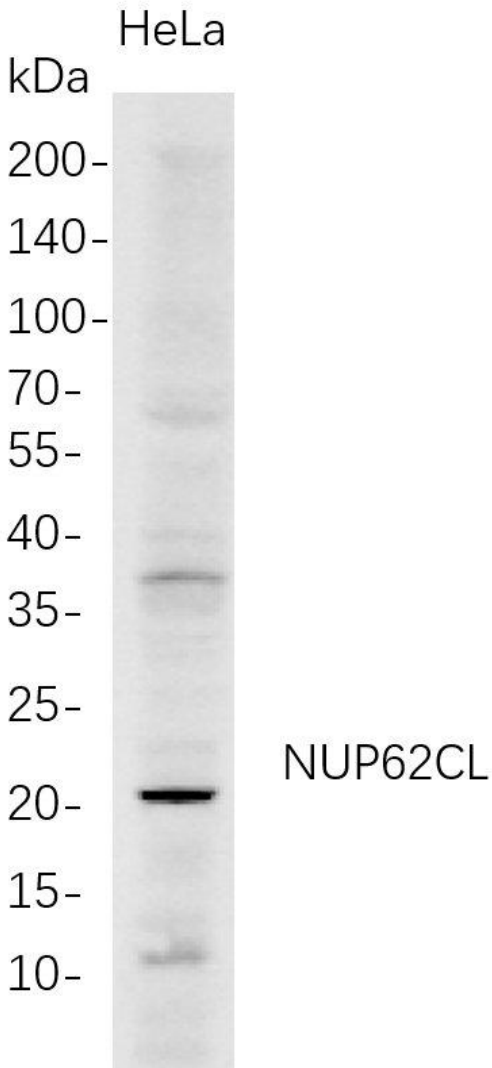




# NUP62CL Rabbit mAb

<b>Catalog No</b>	YP-rAb-17664
<b>Isotype</b>	IgG
<b>Reactivity</b>	Human
<b>Applications</b>	WB,IF,ICC,FC,IP
<b>Gene Name</b>	NUP62CL;NUP62L
<b>Protein Name</b>	Nucleoporin-62 C-terminal-like protein
<b>Purification Process</b>	Protein A
<b>Specificity</b>	Endogenous
<b>Formulation</b>	PBS, 50% glycerol, 0.05% Proclin 300, 0.05%BSA
<b>Source</b>	Monoclonal, Rabbit,IgG
<b>Dilution</b>	WB 1:1000-5000; ICC/IF 1:100-300; FC 1:100-300; IP 1:50-100
<b>Concentration</b>	0.5 mg/ml
<b>Purity</b>	≥90%
<b>Storage Stability</b>	-15° C to -25° C/1 year(Do not lower than -25° C)
<b>Synonyms</b>	NUP62CL ; NUP62L ; Nucleoporin-62 C-terminal-like protein ;
<b>Observed Band</b>	20kD
<b>Calculated Molecular Weight</b>	
<b>Cell Pathway</b>	
<b>Tissue Specificity</b>	
<b>Function</b>	
<b>Background</b>	This gene encodes a protein containing a domain found in nucleoporins which are glycoproteins found in nuclear pore complexes. Alternative splicing results in multiple transcript variants. [provided by RefSeq, Sep 2011]
<b>matters needing attention</b>	Avoid repeated freezing and thawing!
<b>Usage suggestions</b>	This product can be used in immunological reaction related experiments. For more information, please consult technical personnel.





Western Blot analysis of HeLa whole cell lysates were separated by 4-20% SDS-PAGE, and the membrane was blotted with anti-NUP62CL rabbit mAb. The HRP-conjugated Goat anti-Rabbit IgG(H + L) antibody was used to detect the antibody.

