



FAM160A2 Rabbit mAb

Catalog No	YP-rAb-17661
Isotype	IgG
Reactivity	Human
Applications	WB
Gene Name	FHIP1B;C11orf56;FAM160A2;KIAA1759
Protein Name	FHF complex subunit HOOK-interacting protein 1B;FHIP1B;FTS- and Hook-interacting protein;FHIP;
Purification Process	Protein A
Specificity	Endogenous
Formulation	PBS, 50% glycerol, 0.05% Proclin 300, 0.05%BSA
Source	Monoclonal, Rabbit,IgG
Dilution	WB 1:1000-5000
Concentration	0.5 mg/ml
Purity	≥90%
Storage Stability	-15° C to -25° C/1 year(Do not lower than -25° C)
Synonyms	FHIP1B ; C11orf56 ; FAM160A2 ; KIAA1759 ; FHF complex subunit HOOK-interacting protein 1B ; FHIP1B ; FTS- and Hook-interacting protein ; FHIP ;
Observed Band	107kD
Calculated Molecular Weight	
Cell Pathway	
Tissue Specificity	
Function	Component of the FTS/Hook/FHIP complex (FHF complex). The FHF complex may function to promote vesicle trafficking and/or fusion via the homotypic vesicular protein sorting complex (the HOPS complex). FHF complex promotes the distribution of AP-4 complex to the perinuclear area of the cell (PubMed:32073997). {ECO:0000269 PubMed:18799622, ECO:0000269 PubMed:32073997}.
Background	The protein encoded by this gene is part of the FTS/Hook/FHIP (FHF) complex, which can interact with members of the homotypic vesicular protein sorting (HOPS) complex. This interaction suggests that the encoded protein is involved in vesicle trafficking. [provided by RefSeq, Dec 2016]

杭州臻优品生物科技有限公司

热销产品:

蛋白、一抗、抗体对、ELISA试剂盒、生化试剂盒
CCK8试剂盒、QPCR检测试剂盒

检测服务:

ELISA检测及定制服务 | 生化检测 | PCR、QPCR检测 | WB检测
ICO-IP检测 | 切片 | 染色 | 免疫组化 | 免疫荧光 | 透射电镜全套
| 宏基因组、转录组、基因组、蛋白组、代谢组测序



关注官网



关注客服

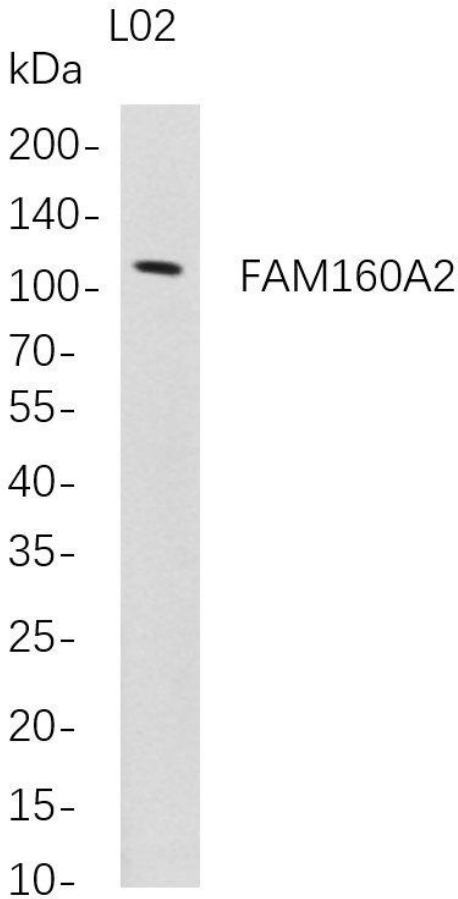


matters needing attention

Avoid repeated freezing and thawing!

Usage suggestions

This product can be used in immunological reaction related experiments. For more information, please consult technical personnel.



Western Blot analysis of L02 whole cell lysates were separated by 4-20% SDS-PAGE, and the membrane was blotted with anti-FAM160A2 rabbit mAb. The HRP-conjugated Goat anti-Rabbit IgG(H + L) antibody was used to detect the antibody.

