



SPAM1 Rabbit mAb

Catalog No	YP-rAb-17657
Isotype	IgG
Reactivity	Human
Applications	WB,IHC
Gene Name	SPAM1;HYAL3;PH20
Protein Name	Hyaluronidase PH-20 (Hyal-PH20) (Hyaluronoglucosaminidase PH-20) (Sperm adhesion molecule 1) (Sperm surface protein PH-20)
Purification Process	Protein A
Specificity	Endogenous
Formulation	PBS, 50% glycerol, 0.05% Proclin 300, 0.05%BSA
Source	Monoclonal, Rabbit,IgG
Dilution	WB 1:1000-5000; IHC 1:100-300 Note: For IHC, we suggest antigen retrieval with TE buffer pH 9.0
Concentration	0.5 mg/ml
Purity	≥90%
Storage Stability	-15° C to -25° C/1 year(Do not lower than -25° C)
Synonyms	SPAM1 ; HYAL3 ; PH20 ; Hyaluronidase PH-20 ; Hyal-PH20 ; Hyaluronoglucosaminidase PH-20 ; Sperm adhesion molecule 1 ; Sperm surface protein PH-20 ;
Observed Band	56kD
Calculated Molecular Weight	
Cell Pathway	Cell membrane; Lipid-anchor, GPI-anchor.
Tissue Specificity	Testis. {ECO:0000269 PubMed:8234258}.
Function	Involved in sperm-egg adhesion. Upon fertilization sperm must first penetrate a layer of cumulus cells that surrounds the egg before reaching the zona pellucida. The cumulus cells are embedded in a matrix containing hyaluronic acid which is formed prior to ovulation. This protein aids in penetrating the layer of cumulus cells by digesting hyaluronic acid. {ECO:0000269 PubMed:8282124}.
Background	Hyaluronidase degrades hyaluronic acid, a major structural proteoglycan found in extracellular matrices and basement membranes. Six members of the hyaluronidase family are clustered into two tightly linked groups on chromosome 3p21.3 and 7q31.3. This gene was previously referred to as HYAL1 and HYA1 and has since been assigned the official symbol SPAM1; another family member





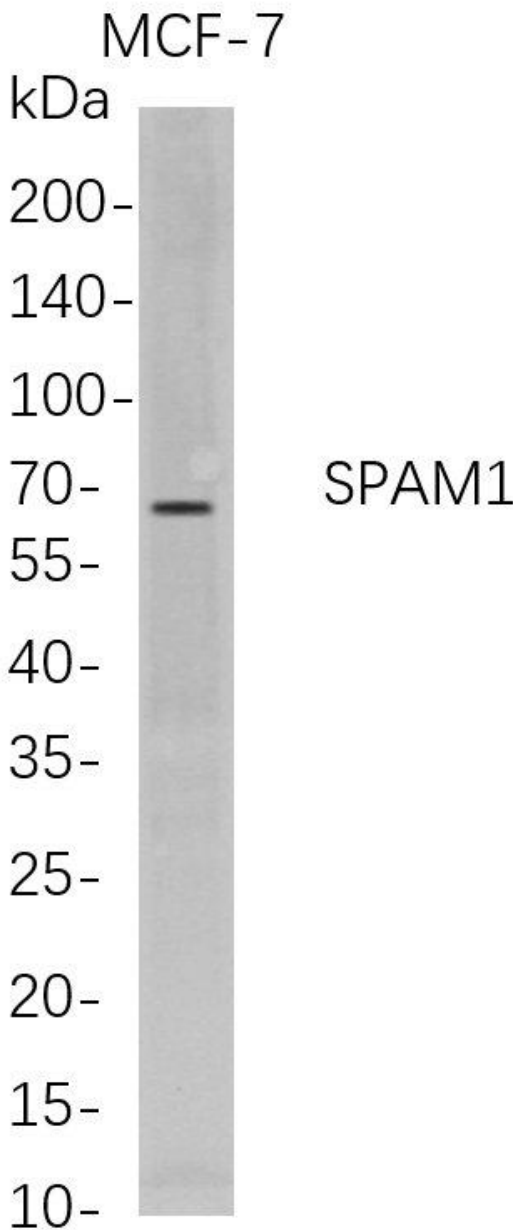
on chromosome 3p21.3 has been assigned HYAL1. This gene encodes a GPI-anchored enzyme located on the human sperm surface and inner acrosomal membrane. This multifunctional protein is a hyaluronidase that enables sperm to penetrate through the hyaluronic acid-rich cumulus cell layer surrounding the oocyte, a receptor that plays a role in hyaluronic acid induced cell signaling, and a receptor that is involved in sperm-zona pellucida adhesion. Abnormal expression of this gene in tumors has implicated this protein in degradation of basement membranes leading to tumor invasion and metastasis. Multiple transcript variants encoding different isoforms have been found for this gene. [provided by RefSeq, Mar 2010]

matters needing attention

Avoid repeated freezing and thawing!

Usage suggestions

This product can be used in immunological reaction related experiments. For more information, please consult technical personnel.



Western Blot analysis of MCF-7 whole cell lysates were separated by 4-20% SDS-PAGE, and the membrane was blotted with anti-SPAM1 rabbit mAb. The HRP-conjugated Goat anti-Rabbit IgG(H + L) antibody was used to detect the antibody.

