



# NABC1 Rabbit mAb

<b>Catalog No</b>	YP-rAb-17656
<b>Isotype</b>	IgG
<b>Reactivity</b>	Human
<b>Applications</b>	WB
<b>Gene Name</b>	BCAS1;AIBC1;NABC1
<b>Protein Name</b>	Breast carcinoma-amplified sequence 1;Amplified and overexpressed in breast cancer;Novel amplified in breast cancer 1;
<b>Purification Process</b>	Protein A
<b>Specificity</b>	Endogenous
<b>Formulation</b>	PBS, 50% glycerol, 0.05% Proclin 300, 0.05%BSA
<b>Source</b>	Monoclonal, Rabbit,IgG
<b>Dilution</b>	WB 1:1000-5000
<b>Concentration</b>	0.5 mg/ml
<b>Purity</b>	≥90%
<b>Storage Stability</b>	-15° C to -25° C/1 year(Do not lower than -25° C)
<b>Synonyms</b>	BCAS1 ; AIBC1 ; NABC1 ; Breast carcinoma-amplified sequence 1 ; Amplified and overexpressed in breast cancer ; Novel amplified in breast cancer 1 ;
<b>Observed Band</b>	64kD
<b>Calculated Molecular Weight</b>	
<b>Cell Pathway</b>	Cytoplasm.
<b>Tissue Specificity</b>	Highly expressed in the brain and, more specifically, in oligodendrocytes (at protein level). Expressed in the prostate, and at lower levels in testis, intestine and colon. Overexpressed in most breast cancer cell lines and down-regulated in some colorectal tumors. {ECO:0000269 PubMed:10857754, ECO:0000269 PubMed:14567997, ECO:0000269 PubMed:29212715}.
<b>Function</b>	Required for myelination. {ECO:0000250 UniProtKB:Q80YN3}.
<b>Background</b>	This gene resides in a region at 20q13 which is amplified in a variety of tumor types and associated with more aggressive tumor phenotypes. Among the genes identified from this region, it was found to be highly expressed in three amplified breast cancer cell lines and in one breast tumor without amplification at 20q13.2. However, this gene is not in the common region of maximal amplification and its expression was not detected in the breast cancer cell line MCF7, in which this region is highly amplified. Although not consistently expressed, this gene is a

## 杭州臻优品生物科技有限公司

### 热销产品:

蛋白、一抗、抗体对、ELISA试剂盒、生化试剂盒  
CCK8试剂盒、QPCR检测试剂盒

### 检测服务:

ELISA检测及定制服务 | 生化检测 | PCR、QPCR检测 | WB检测  
ICO-IP检测 | 切片 | 染色 | 免疫组化 | 免疫荧光 | 透射电镜全套  
| 宏基因组、转录组、基因组、蛋白组、代谢组测序



关注官网



关注客服



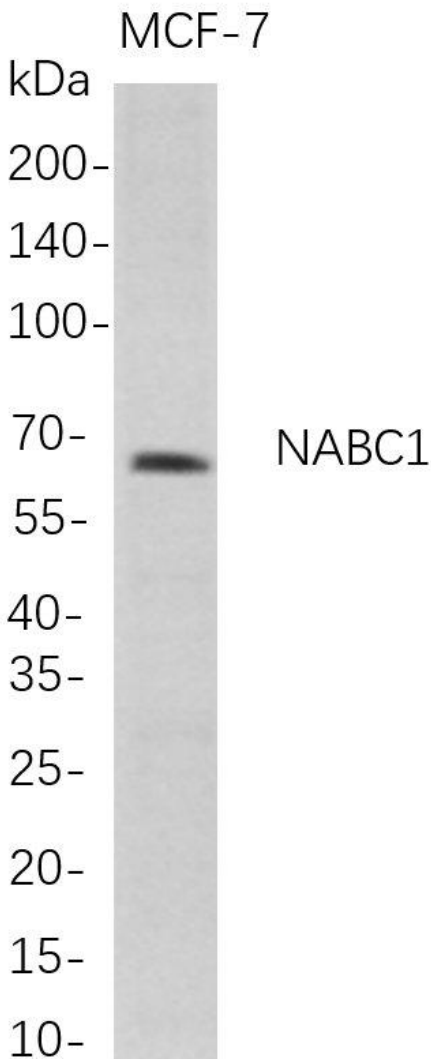
candidate oncogene. [provided by RefSeq, Apr 2016]

**matters needing attention**

Avoid repeated freezing and thawing!

**Usage suggestions**

This product can be used in immunological reaction related experiments. For more information, please consult technical personnel.



Western Blot analysis of MCF-7 whole cell lysates were separated by 4-20% SDS-PAGE, and the membrane was blotted with anti-NABC1 rabbit mAb. The HRP-conjugated Goat anti-Rabbit IgG(H + L) antibody was used to detect the antibody.

