



# I $\kappa$ B- $\epsilon$ Rabbit mAb

<b>Catalog No</b>	YP-rAb-17655
<b>Isotype</b>	IgG
<b>Reactivity</b>	Human
<b>Applications</b>	WB,IHC,IF,ICC,IP
<b>Gene Name</b>	NFKBIE;IKBE
<b>Protein Name</b>	NF-kappa-B inhibitor epsilon;NF-kappa-BIE;l-kappa-B-epsilon;IkB-E;IkB-epsilon;IkappaBepsilon;
<b>Purification Process</b>	Protein A
<b>Specificity</b>	Endogenous
<b>Formulation</b>	PBS, 50% glycerol, 0.05% Proclin 300, 0.05%BSA
<b>Source</b>	Monoclonal, Rabbit,IgG
<b>Dilution</b>	WB 1:1000-5000; IHC 1:100-300; ICC/IF 1:100-300; IP 1:50-100 Note: For IHC, we suggest antigen retrieval with TE buffer pH 9.0
<b>Concentration</b>	0.5 mg/ml
<b>Purity</b>	≥90%
<b>Storage Stability</b>	-15° C to -25° C/1 year(Do not lower than -25° C)
<b>Synonyms</b>	NFKBIE ; IKBE ; NF-kappa-B inhibitor epsilon ; NF-kappa-BIE ; l-kappa-B-epsilon ; IkB-E ; IkB-epsilon ; IkappaBepsilon ;
<b>Observed Band</b>	55kD
<b>Calculated Molecular Weight</b>	
<b>Cell Pathway</b>	Cytoplasm.
<b>Tissue Specificity</b>	Highly expressed in spleen, testis and lung, followed by kidney, pancreas, heart, placenta and brain. Also expressed in granulocytes and macrophages.
<b>Function</b>	Inhibits NF-kappa-B by complexing with and trapping it in the cytoplasm. Inhibits DNA-binding of NF-kappa-B p50-p65 and p50-c-Rel complexes. {ECO:0000269 PubMed:9315679}.
<b>Background</b>	The protein encoded by this gene binds to components of NF-kappa-B, trapping the complex in the cytoplasm and preventing it from activating genes in the nucleus. Phosphorylation of the encoded protein targets it for destruction by the ubiquitin pathway, which activates NF-kappa-B by making it available to translocate to the nucleus. [provided by RefSeq, Sep 2011],
<b>matters needing attention</b>	Avoid repeated freezing and thawing!

## 杭州臻优品生物科技有限公司

### 热销产品:

蛋白、一抗、抗体对、ELISA试剂盒、生化试剂盒  
CCK8试剂盒、QPCR检测试剂盒

### 检测服务:

ELISA检测及定制服务 | 生化检测 | PCR、QPCR检测 | WB检测  
ICO-IP检测 | 切片 | 染色 | 免疫组化 | 免疫荧光 | 透射电镜全套  
| 宏基因组、转录组、基因组、蛋白组、代谢组测序



关注官网

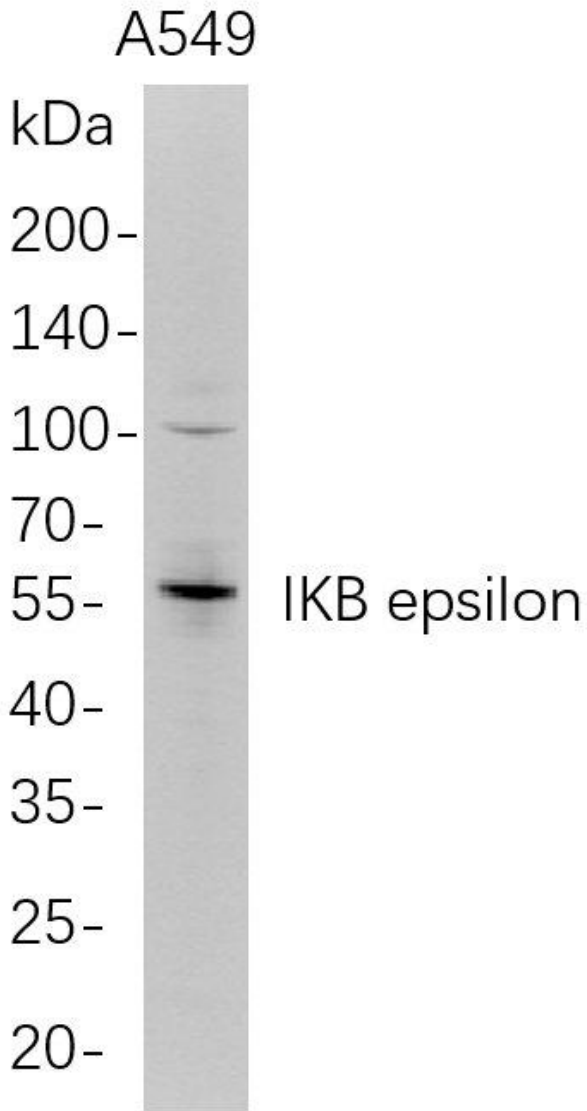


关注客服



### Usage suggestions

This product can be used in immunological reaction related experiments. For more information, please consult technical personnel.



Western Blot analysis of A549 whole cell lysates were separated by 4-20% SDS-PAGE, and the membrane was blotted with anti-IKB epsilon rabbit mAb. The HRP-conjugated Goat anti-Rabbit IgG(H + L) antibody was used to detect the antibody.

