



# ZO1 Rabbit mAb

<b>Catalog No</b>	YP-rAb-17653
<b>Isotype</b>	IgG
<b>Reactivity</b>	Human,Mouse,Rat,Pig
<b>Applications</b>	WB,IHC,IF,ELISA
<b>Gene Name</b>	TJP1 ZO1
<b>Protein Name</b>	Tight junction protein ZO-1 (Tight junction protein 1) (Zona occludens protein 1) (Zonula occludens protein 1)
<b>Purification Process</b>	Protein A
<b>Specificity</b>	Endogenous
<b>Formulation</b>	PBS, 50% glycerol, 0.05% Proclin 300, 0.05%BSA
<b>Source</b>	Monoclonal, Rabbit,IgG
<b>Dilution</b>	IHC 1:1000-1:4000; WB 1:2000-1:10000; IF 1:200-1:1000; ELISA 1:5000-1:20000; Note: For IHC, we suggest antigen retrieval with TE buffer pH 9.0
<b>Concentration</b>	0.5 mg/ml
<b>Purity</b>	≥90%
<b>Storage Stability</b>	-15° C to -25° C/1 year(Do not lower than -25° C)
<b>Synonyms</b>	
<b>Observed Band</b>	220kD
<b>Calculated Molecular Weight</b>	195kD
<b>Cell Pathway</b>	Membrane
<b>Tissue Specificity</b>	The alpha-containing isoform is found in most epithelial cell junctions. The short isoform is found both in endothelial cells and the highly specialized epithelial junctions of renal glomeruli and Sertoli cells of the seminiferous tubules.
<b>Function</b>	Domain:The second PDZ domain mediates interaction with GJA12.,Function:The N-terminal may be involved in transducing a signal required for tight junction assembly, while the C-terminal may have specific properties of tight junctions. The alpha domain might be involved in stabilizing junctions.,PTM:Phosphorylated.,similarity:Belongs to the MAGUK family.,similarity:Contains 1 guanylate kinase-like domain.,similarity:Contains 1 PDZ (DHR) domain.,similarity:Contains 1 SH3 domain.,similarity:Contains 1 ZU5 domain.,similarity:Contains 3 PDZ (DHR) domains.,subcellular location:Movement of ZO-1 from the cytoplasm to membrane is an early event occurring concurrently with cell-cell contact.,subunit:Interacts with HSPA4 and KIRREL1 (By similarity). Homodimer, and heterodimer with TJP2/ZO-2 and

## 杭州臻优品生物科技有限公司

### 热销产品:

蛋白、一抗、抗体对、ELISA试剂盒、生化试剂盒  
CCK8试剂盒、QPCR检测试剂盒

### 检测服务:

ELISA检测及定制服务 | 生化检测 | PCR、QPCR检测 | WB检测  
ICO-IP检测 | 切片 | 染色 | 免疫组化 | 免疫荧光 | 透射电镜全套  
| 宏基因组、转录组、基因组、蛋白组、代谢组测序



关注官网



关注客服



TJP3/ZO-3. Interacts with occludin, claudins, CGN/cingulin, CXADR, GJA12, GJD3 and UBN1.,tissue specificity:The alpha-containing isoform is found in most epithelial cell junctions. The short isoform is found both in endothelial cells and the highly specialized epithelial junctions of renal glomeruli and Sertoli cells of the seminiferous tubules.,

### Background

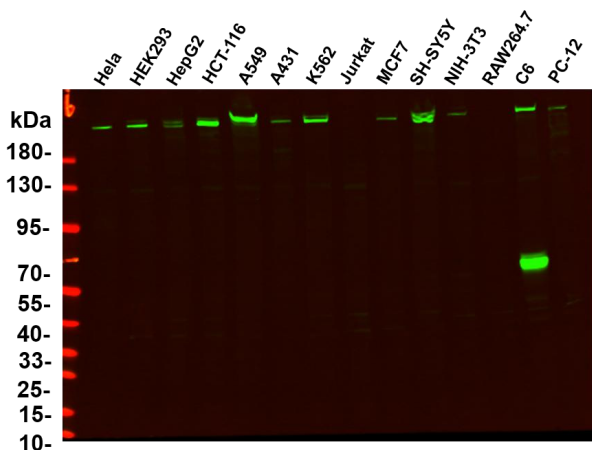
This gene encodes a protein located on a cytoplasmic membrane surface of intercellular tight junctions. The encoded protein may be involved in signal transduction at cell-cell junctions. Alternative splicing of this gene results in multiple transcript variants. [provided by RefSeq, Jul 2014],

### matters needing attention

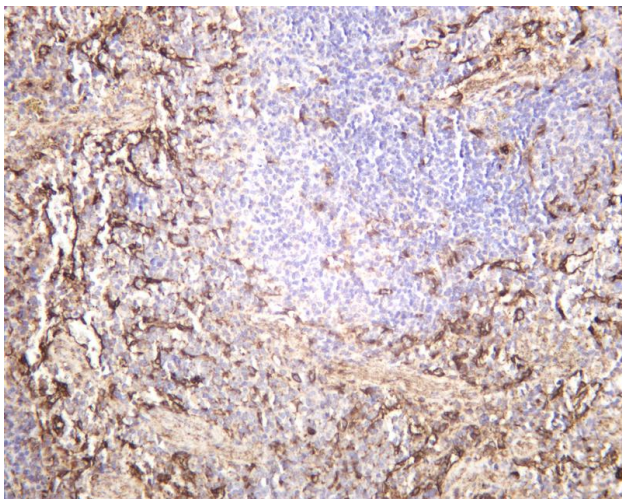
Avoid repeated freezing and thawing!

### Usage suggestions

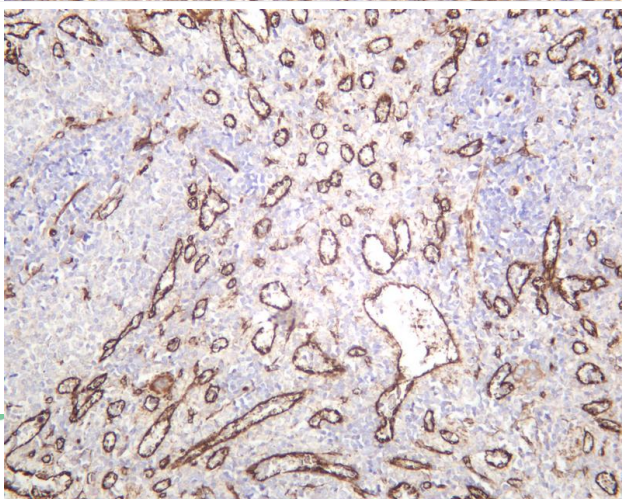
This product can be used in immunological reaction related experiments. For more information, please consult technical personnel.



Various whole cell lysates were separated by 4-20% SDS-PAGE, and the primary antibody was used at 4~C, over night with a 1:5000 dilution . The Dylight z800-conjugated Goat anti-Rabbit antibody

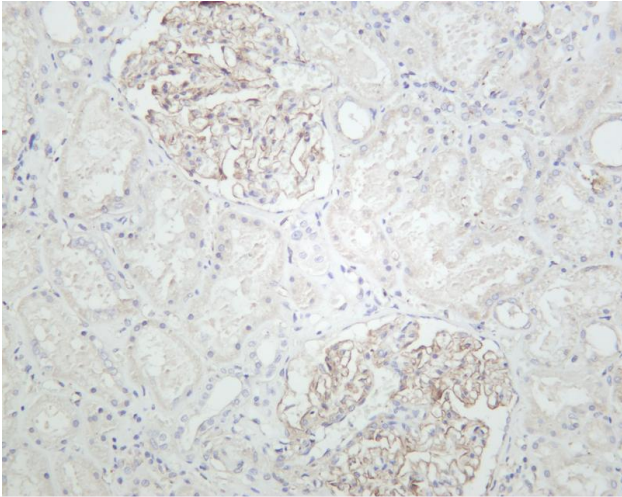


Mouse spleen was stained with anti-ZO1 rabbit antibody

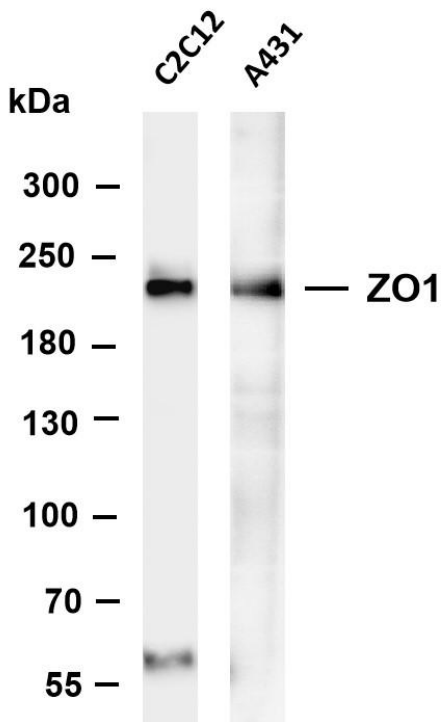


Rat spleen was stained with anti-ZO1 rabbit antibody





Human kidney was stained with anti-ZO1 rabbit antibody



Various whole cell lysates were separated by 4-8% SDS-PAGE, and the membrane was blotted with anti-ZO1 antibody. The HRP-conjugated Goat anti-Rabbit IgG(H + L) antibody was used to detect the antibody. Lane 1: C2C12 Lane 2: A431 Predicted band size: 195kDa Observed band size: 220kDa

