



# Podoplanin Rabbit mAb

<b>Catalog No</b>	YP-rAb-17652
<b>Isotype</b>	IgG
<b>Reactivity</b>	Human,Mouse,Rat
<b>Applications</b>	WB,IHC,IF,ELISA
<b>Gene Name</b>	PDPN GP36 PSEC0003 PSEC0025
<b>Protein Name</b>	Aggrus Glycoprotein 36 Gp36 PA2.26 antigen T1-alpha T1A
<b>Purification Process</b>	Protein A
<b>Specificity</b>	Endogenous
<b>Formulation</b>	PBS, 50% glycerol, 0.05% Proclin 300, 0.05%BSA
<b>Source</b>	Monoclonal, Rabbit,IgG
<b>Dilution</b>	IHC 1:200-1:1000; WB 1:1000-1:5000; IF 1:200-1:1000; ELISA 1:5000-1:20000; Note: For IHC, we suggest antigen retrieval with TE buffer pH 9.0
<b>Concentration</b>	0.5 mg/ml
<b>Purity</b>	≥90%
<b>Storage Stability</b>	-15° C to -25° C/1 year(Do not lower than -25° C)
<b>Synonyms</b>	Podoplanin ; Aggrus ; Glycoprotein 36 ; Gp36 ; PA2.26 antigen ; T1-alpha ; T1A ;
<b>Observed Band</b>	36kD
<b>Calculated Molecular Weight</b>	17kD
<b>Cell Pathway</b>	Membrane, Cytoplasm
<b>Tissue Specificity</b>	Tonsil/ Appendix
<b>Function</b>	<p>Caution:The sequence shown here is derived from an Ensembl automatic analysis pipeline and should be considered as preliminary data.,Function:May be involved in cell migration and/or actin cytoskeleton organization. When expressed in keratinocytes, induces changes in cell morphology with transfected cells showing an elongated shape, numerous membrane protrusions, major reorganization of the actin cytoskeleton, increased motility and decreased cell adhesion. Required for normal lung cell proliferation and alveolus formation at birth. Induces platelet aggregation. Does not have any effect on folic acid or amino acid transport. Does not function as a water channel or as a regulator of aquaporin-type water channels.,PTM:Extensively O-glycosylated. Contains sialic acid residues. O-glycosylation is necessary for platelet aggregation activity.,PTM:The N-terminus is blocked.,similarity:Belongs to the podoplanin family.,subcellular location:Localized to actin-rich microvilli and plasma</p>





membrane projections such as filopodia, lamellipodia and ruffles.,tissue specificity:Highly expressed in placenta, lung, skeletal muscle and brain. Weakly expressed in brain, kidney and liver. In placenta, expressed on the apical plasma membrane of endothelium. In lung, expressed in alveolar epithelium. Up-regulated in colorectal tumors and expressed in 25% of early oral squamous cell carcinomas.,

### Background

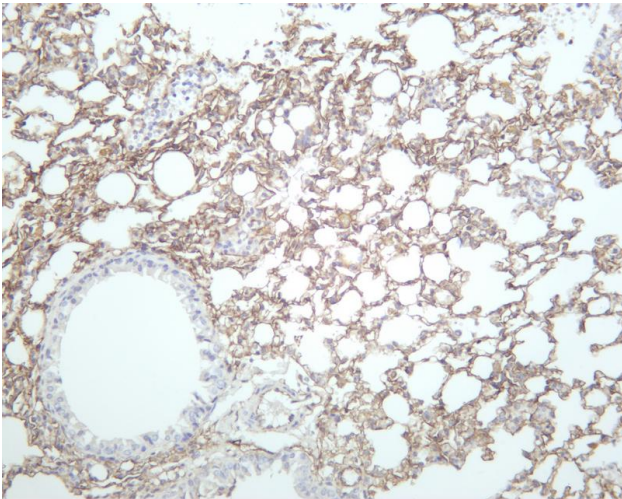
This gene encodes a type-I integral membrane glycoprotein with diverse distribution in human tissues. The physiological function of this protein may be related to its mucin-type character. The homologous protein in other species has been described as a differentiation antigen and influenza-virus receptor. The specific function of this protein has not been determined but it has been proposed as a marker of lung injury. Alternatively spliced transcript variants encoding different isoforms have been identified. [provided by RefSeq, Jul 2008],

### matters needing attention

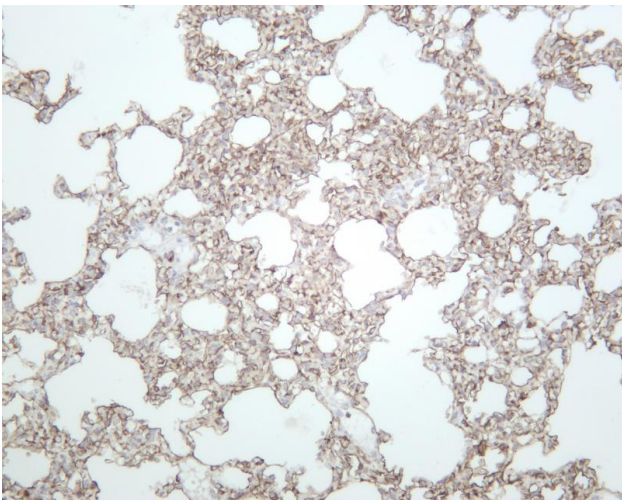
Avoid repeated freezing and thawing!

### Usage suggestions

This product can be used in immunological reaction related experiments. For more information, please consult technical personnel.



Mouse lung was stained with anti-Podoplanin rabbit antibody



Rat lung was stained with anti-Podoplanin rabbit antibody

## 杭州臻优品生物科技有限公司

### 热销产品:

蛋白、一抗、抗体对、ELISA试剂盒、生化试剂盒  
CCK8试剂盒、QPCR检测试剂盒

### 检测服务:

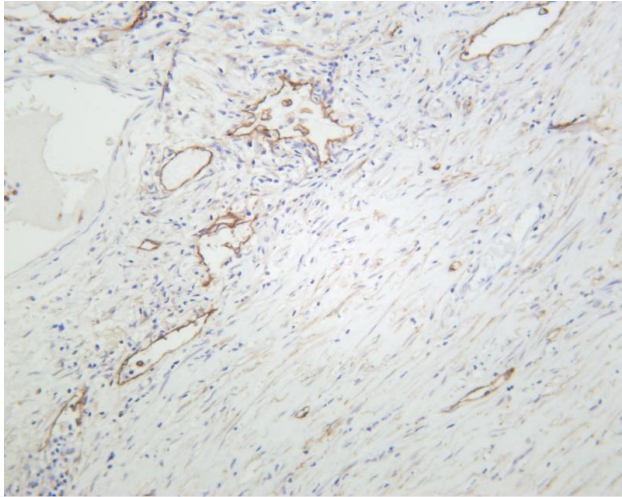
ELISA检测及定制服务 | 生化检测 | PCR、QPCR检测 | WB检测  
ICO-IP检测 | 切片 | 染色 | 免疫组化 | 免疫荧光 | 透射电镜全套  
| 宏基因组、转录组、基因组、蛋白组、代谢组测序



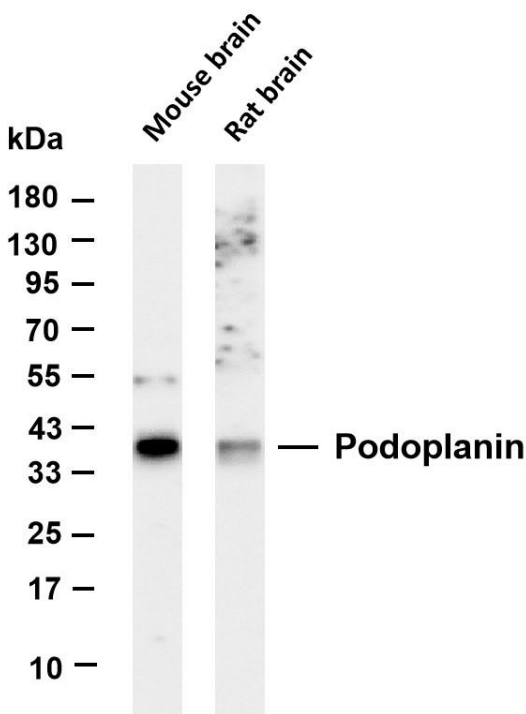
关注官网



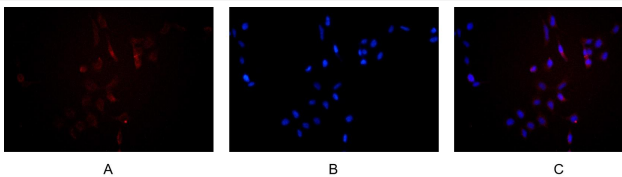
关注客服



Human lung squamous carcinoma was stained with anti-Podoplanin rabbit antibody



Various whole cell lysates were separated by 4-20% SDS-PAGE, and the membrane was blotted with anti-Podoplanin antibody. The HRP-conjugated Goat anti-Rabbit IgG(H + L) antibody was used to detect the antibody. Lane 1: Mouse brain Lane 2: Rat brain Predicted band size: 17kDa Observed band size: 36kDa



Immunofluorescence analysis of HEK293. Picture A: Podoplanin antibody (red). Picture B: DAPI (blue). Picture C: Merge of A+B

