



LRP6 Rabbit mAb

Catalog No	YP-rAb-17634
Isotype	IgG
Reactivity	Human,Mouse,Rat
Applications	WB,IHC,IF,ELISA
Gene Name	LRP6
Protein Name	Low-density lipoprotein receptor-related protein 6 (LRP-6)
Purification Process	Protein A
Specificity	Endogenous
Formulation	PBS, 50% glycerol, 0.05% Proclin 300, 0.05%BSA
Source	Monoclonal, Rabbit,IgG
Dilution	IHC 1:200-1:1000; WB 1:2000-1:10000; IF 1:200-1:1000; ELISA 1:5000-1:20000; Note: For IHC, we suggest antigen retrieval with TE buffer pH 9.0
Concentration	0.5 mg/ml
Purity	≥90%
Storage Stability	-15° C to -25° C/1 year(Do not lower than -25° C)
Synonyms	
Observed Band	210kD
Calculated Molecular Weight	180kD
Cell Pathway	Membrane
Tissue Specificity	Widely coexpressed with LRP5 during embryogenesis and in adult tissues.
Function	Disease:Defects in LRP6 are the cause of autosomal dominant coronary artery disease type 2 (ADCAD2) [MIM:610947].,Domain:The YWTD-EGF-like domains 1 and 2 are required for the interaction with Wnt-frizzled complex. The YWTD-EGF-like domains 3 and 4 are required for the interaction with DKK1.,Function:Essential for the Wnt/beta catenin signaling pathway, probably by acting as a coreceptor together with Frizzled for Wnt. Specific high-affinity receptor for DKK1 and DKK2, but not DKK3. The interaction with DKK1 blocks LRP6-mediated Wnt/beta catenin signaling via LRP6 removal via Kremen proteins-mediated endocytosis.,similarity:Belongs to the LDLR family.,similarity:Contains 20 LDL-receptor class B repeats.,similarity:Contains 3 LDL-receptor class A domains.,similarity:Contains 4 EGF-like domains.,subunit:Interacts with RSPO1 and RSPO3 (By similarity). Interacts with FZD5. Essential component of the Wnt7 receptor complex. Wnt7A interacts with





the LRP6/FZD5 complex. This interaction is antagonized by DKK1 and DKK3.,tissue specificity:Widely co-expressed with LRP5 during embryogenesis and in adult tissues.,

Background

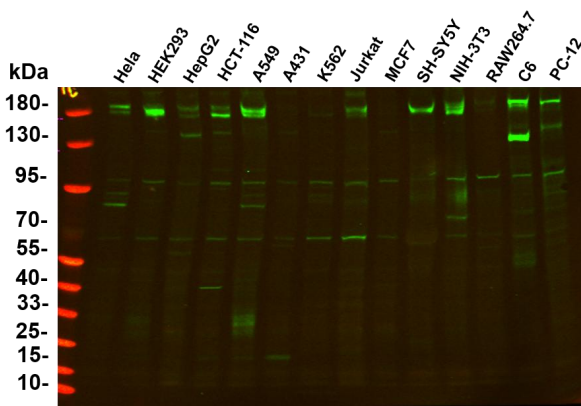
This gene encodes a member of the low density lipoprotein (LDL) receptor gene family. LDL receptors are transmembrane cell surface proteins involved in receptor-mediated endocytosis of lipoprotein and protein ligands. The protein encoded by this gene functions as a receptor or, with Frizzled, a co-receptor for Wnt and thereby transmits the canonical Wnt/beta-catenin signaling cascade. Through its interaction with the Wnt/beta-catenin signaling cascade this gene plays a role in the regulation of cell differentiation, proliferation, and migration and the development of many cancer types. This protein undergoes gamma-secretase dependent RIP- (regulated intramembrane proteolysis) processing but the precise locations of the cleavage sites have not been determined.[provided by RefSeq, Dec 2009],

matters needing attention

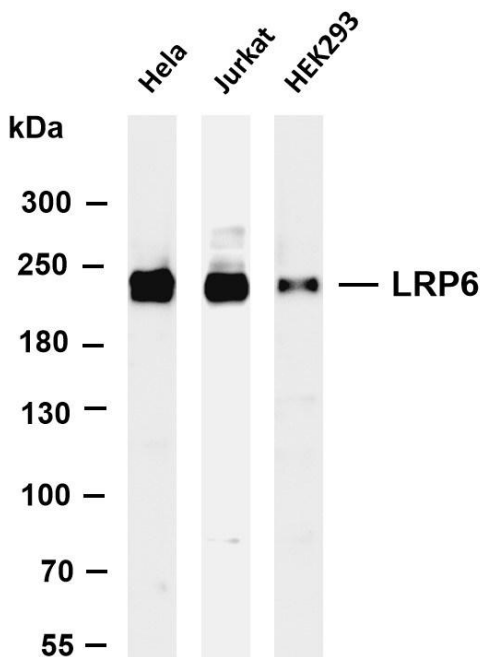
Avoid repeated freezing and thawing!

Usage suggestions

This product can be used in immunological reaction related experiments. For more information, please consult technical personnel.



Various whole cell lysates were separated by 4-20% SDS-PAGE, and the primary antibody was used at 4°C, over night with a 1:5000 dilution . The Dylight L800-conjugated Goat anti-Rabbit antibody

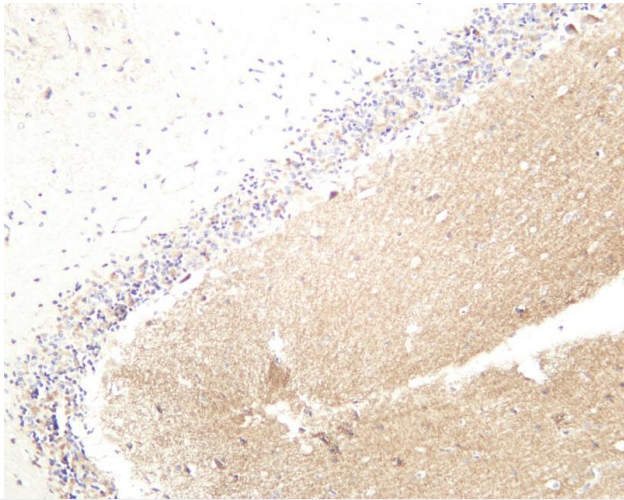


Various whole cell lysates were separated by 4-8% SDS-PAGE, and the membrane was blotted with anti-LRP6 antibody. The HRP-conjugated Goat anti-Rabbit IgG(H + L) antibody was used to detect the antibody. Lane 1: HeLa Lane 2: Jurkat Lane 3: HEK293 Predicted band size: 180kDa Observed band size: 210kDa





Human brain was stained with anti-LRP6 rabbit antibody



Rat brain was stained with anti-LRP6 rabbit antibody

