



AIFM1 Rabbit mAb

Catalog No	YP-rAb-17633
Isotype	IgG
Reactivity	Human,Mouse,Rat
Applications	WB,IHC,IF,IP,ELISA
Gene Name	AIFM1 ALF PDCD8
Protein Name	Apoptosis-inducing factor 1 mitochondrial
Purification Process	Protein A
Specificity	Endogenous
Formulation	PBS, 50% glycerol, 0.05% Proclin 300, 0.05%BSA
Source	Monoclonal, Rabbit,IgG
Dilution	IHC 1:200-1:1000; WB 1:2000-1:10000; IF 1:200-1:1000; ELISA 1:5000-1:20000; IP 1:50-1:200; Note: For IHC, we suggest antigen retrieval with TE buffer pH 9.0
Concentration	0.5 mg/ml
Purity	≥90%
Storage Stability	-15° C to -25° C/1 year(Do not lower than -25° C)
Synonyms	AIFM1 ; AIF ; PDCD8 ; Apoptosis-inducing factor 1 ; mitochondrial ; Programmed cell death protein 8
Observed Band	67kD
Calculated Molecular Weight	67kD
Cell Pathway	Mitochondrion intermembrane space . Mitochondrion inner membrane. Cytoplasm . Nucleus . Cytoplasm, perinuclear region . Proteolytic cleavage during or just after translocation into the mitochondrial intermembrane space (IMS) results in the formation of an inner-membrane-anchored mature form (AIFmit). During apoptosis, further proteolytic processing leads to a mature form, which is confined to the mitochondrial IMS in a soluble form (AIFsol). AIFsol is released to the cytoplasm in response to specific death signals, and translocated to the nucleus, where it induces nuclear apoptosis (PubMed:15775970). Colocalizes with EIF3G in the nucleus and perinuclear region (PubMed:17094969). . ; [Isoform 3]: Mitochondrion intermembrane space . Mitochondrion inner membrane . Has a stronger membrane anchorage than isoform 1. . ; [Isoform 4]: Mitochondrion . Cytoplasm, cytosol . In pro-apoptotic conditions, is released from mitochondria to cytosol in a calpain/cathepsin-dependent manner. . ; [Isoform 5]: Cytoplasm .
Tissue Specificity	Expressed in all tested tissues (PubMed:16644725). Detected in muscle and skin fibroblasts (at protein level) (PubMed:23217327). Expressed in osteoblasts (at protein level) (PubMed:28842795). . ; [Isoform 3]: Brain specific. ; [Isoform 4]:

杭州臻优品生物科技有限公司

热销产品:

蛋白、一抗、抗体对、ELISA试剂盒、生化试剂盒
CCK8试剂盒、QPCR检测试剂盒

检测服务:

ELISA检测及定制服务 | 生化检测 | PCR、QPCR检测 | WB检测
ICO-IP检测 | 切片 | 染色 | 免疫组化 | 免疫荧光 | 透射电镜全套
| 宏基因组、转录组、基因组、蛋白组、代谢组测序



关注官网



关注客服



Expressed in all tested tissues except brain. ; [Isoform 5]: Isoform 5 is frequently down-regulated in human cancers.

Function

Catalytic activity: 2 glutathione + protein-disulfide = glutathione disulfide + protein-dithiol. cofactor: FAD. Function: Possesses significant protein thiol-disulfide oxidase activity. Function: Probable oxidoreductase that acts as a caspase-independent mitochondrial effector of apoptotic cell death. Extramitochondrial AIF induces nuclear chromatin condensation and large scale DNA fragmentation (in vitro). Binds to DNA in a sequence-independent manner. similarity: Belongs to the FAD-dependent oxidoreductase family. similarity: Contains 1 thioredoxin domain. subcellular location: Translocated to the nucleus upon induction of apoptosis. subunit: Interacts with XIAP. tissue specificity: Widely expressed.

Background

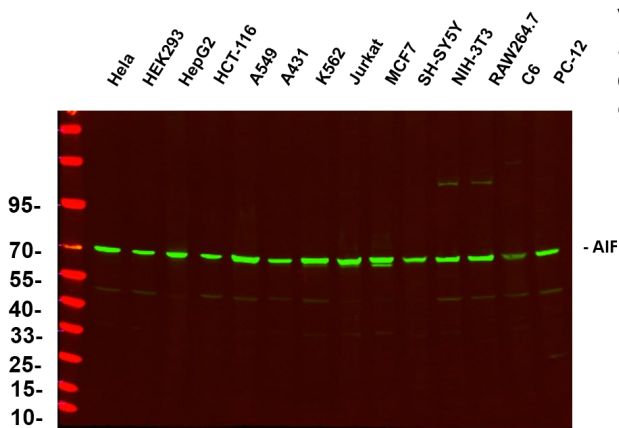
This gene encodes a flavoprotein essential for nuclear disassembly in apoptotic cells, and it is found in the mitochondrial intermembrane space in healthy cells. Induction of apoptosis results in the translocation of this protein to the nucleus where it affects chromosome condensation and fragmentation. In addition, this gene product induces mitochondria to release the apoptogenic proteins cytochrome c and caspase-9. Mutations in this gene cause combined oxidative phosphorylation deficiency 6 (COXPD6), a severe mitochondrial encephalomyopathy, as well as Cowchock syndrome, also known as X-linked recessive Charcot-Marie-Tooth disease-4 (CMTX-4), a disorder resulting in neuropathy, and axonal and motor-sensory defects with deafness and mental retardation. Alternative splicing results in multiple transcript variants. A related pseudogene has been identified on chromosome

matters needing attention

Avoid repeated freezing and thawing!

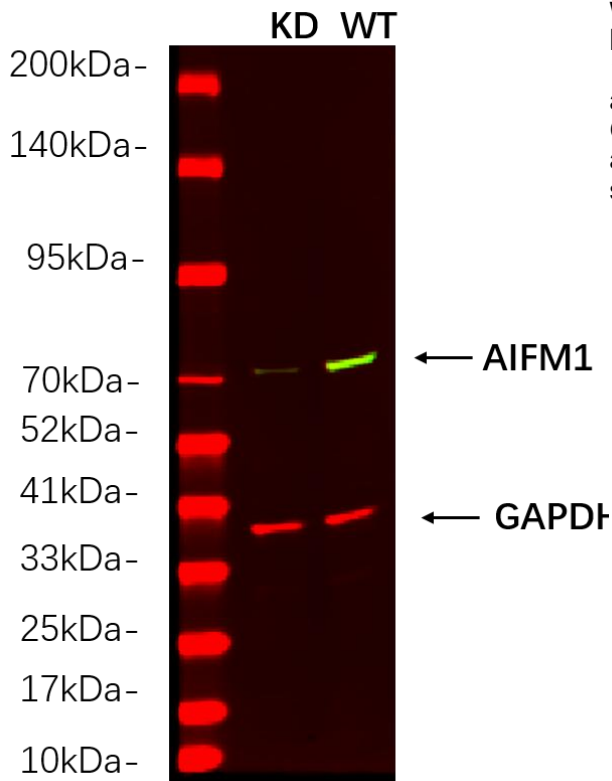
Usage suggestions

This product can be used in immunological reaction related experiments. For more information, please consult technical personnel.

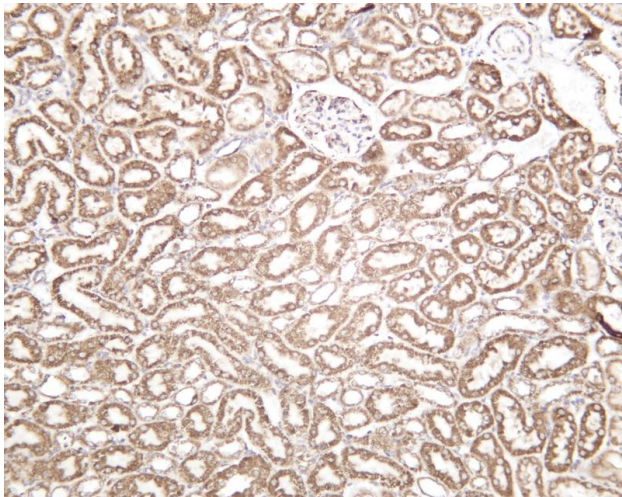


Various whole cell lysates were separated by 4-20% SDS-PAGE, and the primary antibody was used at 4~C, over night with a 1:5000 dilution. The Dylight 800-conjugated Goat anti-Rabbit antibody

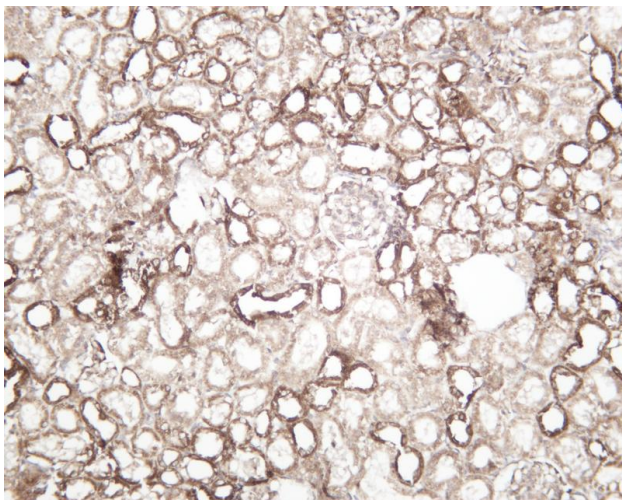




Western blot analysis of lysates from HAP1 WT and knockdown cell. (Green) primary antibody was diluted at 1:5000, 4° over night, Dylight 800 secondary antibody was diluted at 1:10000, 37° 1hour. (Red) GAPDH Monoclonal Antibody(5B7) antibody was diluted at 1:5000 as loading control, 4° over night, Dylight 680 secondary antibody was diluted at 1:10000, 37° 1hour.

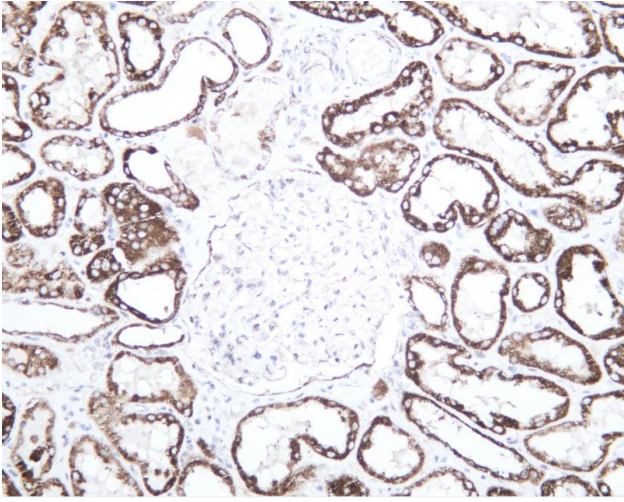


Mouse kidney was stained with anti-AIF-M1 rabbit antibody



Rat kidney was stained with anti-AIF-M1 rabbit antibody





Human kidney was stained with anti-AIF-M1 rabbit antibody

杭州臻优品生物科技有限公司

热销产品:

蛋白、一抗、抗体对、ELISA试剂盒、生化试剂盒
CCK8试剂盒、QPCR检测试剂盒

检测服务:

ELISA检测及定制服务 | 生化检测 | PCR、QPCR检测 | WB检测
ICO-IP检测 | 切片 | 染色 | 免疫组化 | 免疫荧光 | 透射电镜全套
| 宏基因组、转录组、基因组、蛋白组、代谢组测序



关注官网



关注客服