



ALDH1A1 Rabbit mAb

Catalog No	YP-rAb-17626
Isotype	IgG
Reactivity	Human,Mouse,Rat
Applications	WB,IHC,IF,IP,ELISA
Gene Name	ALDH1A1
Protein Name	Retinal dehydrogenase 1
Purification Process	Protein A
Specificity	Endogenous
Formulation	PBS, 50% glycerol, 0.05% Proclin 300, 0.05%BSA
Source	Monoclonal, Rabbit,IgG
Dilution	IHC 1:500-1:2000; WB 1:2000-1:10000; IF 1:200-1:1000; ELISA 1:5000-1:20000; IP 1:50-1:200; Note: For IHC, we suggest antigen retrieval with TE buffer pH 9.0
Concentration	0.5 mg/ml
Purity	≥90%
Storage Stability	-15° C to -25° C/1 year(Do not lower than -25° C)
Synonyms	ALDH1A1 ; ALDC ; ALDH1 ; PUMB1 ; Retinal dehydrogenase 1 ; RALDH 1 ; RaIDH1 ; ALDH-E1 ; ALHDII ; Aldehyde dehydrogenase family 1 member A1 ; Aldehyde dehydrogenase, cytosolic
Observed Band	55kD
Calculated Molecular Weight	55kD
Cell Pathway	Cytoplasm, cytosol . Cell projection, axon .
Tissue Specificity	Expressed by erythrocytes (at protein level).
Function	Catalytic activity:Retinal + NAD(+) + H(2)O = retinoate + NADH.,Function:Binds free retinal and cellular retinol-binding protein-bound retinal. Can convert/oxidize retinaldehyde to retinoic acid.,pathway:Cofactor metabolism; retinol metabolism.,similarity:Belongs to the aldehyde dehydrogenase family.,subunit:Homotetramer.,
Background	The protein encoded by this gene belongs to the aldehyde dehydrogenase family. Aldehyde dehydrogenase is the next enzyme after alcohol dehydrogenase in the major pathway of alcohol metabolism. There are two major aldehyde dehydrogenase isozymes in the liver, cytosolic and mitochondrial, which are encoded by distinct genes, and can be distinguished by their electrophoretic





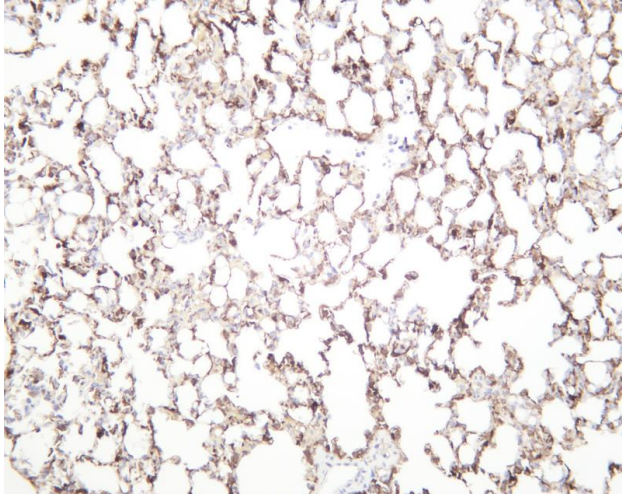
mobility, kinetic properties, and subcellular localization. This gene encodes the cytosolic isozyme. Studies in mice show that through its role in retinol metabolism, this gene may also be involved in the regulation of the metabolic responses to high-fat diet. [provided by RefSeq, Mar 2011],

matters needing attention

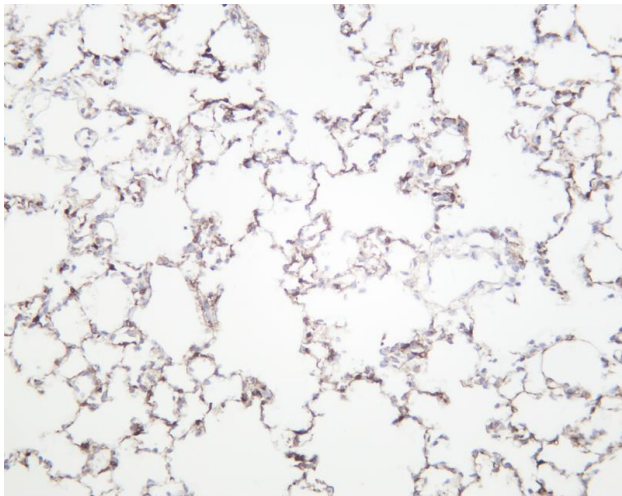
Avoid repeated freezing and thawing!

Usage suggestions

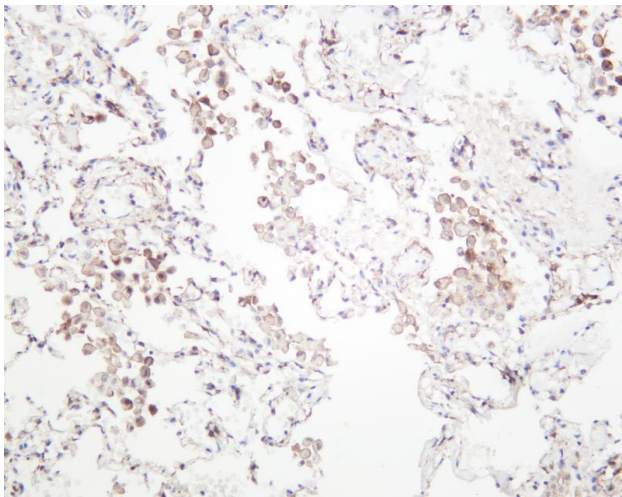
This product can be used in immunological reaction related experiments. For more information, please consult technical personnel.



Mouse lung was stained with anti-ALDH1A1 rabbit antibody



Rat lung was stained with anti-ALDH1A1 rabbit antibody



Human lung was stained with anti-ALDH1A1 rabbit antibody

杭州臻优品生物科技有限公司

热销产品:

蛋白、一抗、抗体对、ELISA试剂盒、生化试剂盒
CCK8试剂盒、QPCR检测试剂盒

检测服务:

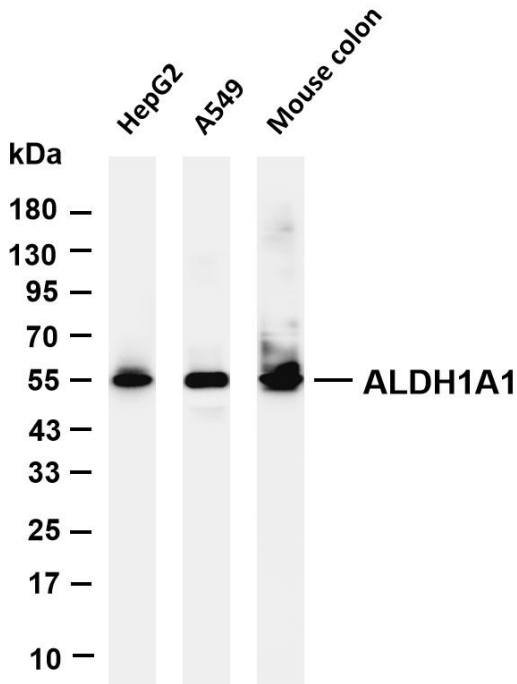
ELISA检测及定制服务 | 生化检测 | PCR、QPCR检测 | WB检测
ICO-IP检测 | 切片 | 染色 | 免疫组化 | 免疫荧光 | 透射电镜全套
| 宏基因组、转录组、基因组、蛋白组、代谢组测序



关注官网



关注客服



Various whole cell lysates were separated by 4-20% SDS-PAGE, and the membrane was blotted with anti-ALDH1A1 antibody. The HRP-conjugated Goat anti-Rabbit IgG(H + L) antibody was used to detect the antibody. Lane 1: HepG2 Lane 2: A549 Lane 3: Mouse colon Predicted band size: 55kDa Observed band size: 55kDa

杭州臻优品生物科技有限公司

热销产品:

蛋白、一抗、抗体对、ELISA试剂盒、生化试剂盒
CCK8试剂盒、QPCR检测试剂盒

检测服务:

ELISA检测及定制服务 | 生化检测 | PCR、QPCR检测 | WB检测
ICO-IP检测 | 切片 | 染色 | 免疫组化 | 免疫荧光 | 透射电镜全套
| 宏基因组、转录组、基因组、蛋白组、代谢组测序



关注官网



关注客服