



CTCF Rabbit mAb

Catalog No	YP-rAb-17622
Isotype	IgG
Reactivity	Human,Mouse,Rat
Applications	WB,IHC,IF,ELISA
Gene Name	CTCF
Protein Name	Transcriptional repressor CTCF
Purification Process	Protein A
Specificity	Endogenous
Formulation	PBS, 50% glycerol, 0.05% Proclin 300, 0.05%BSA
Source	Monoclonal, Rabbit,IgG
Dilution	IHC 1:2000-1:10000; WB 1:2000-1:10000; IF 1:200-1:1000; ELISA 1:5000-1:20000; Note: For IHC, we suggest antigen retrieval with TE buffer pH 9.0
Concentration	0.5 mg/ml
Purity	≥90%
Storage Stability	-15° C to -25° C/1 year(Do not lower than -25° C)
Synonyms	CTCF ; Transcriptional repressor CTCF ; 11-zinc finger protein ; CCCTC-binding factor ; CTCFL paralog
Observed Band	140kD
Calculated Molecular Weight	83kD
Cell Pathway	Nucleus
Tissue Specificity	Ubiquitous. Absent in primary spermatocytes.
Function	Transcriptional repressor binding to promoters of vertebrate c-myc gene. Also binds to the PLK and PIM1 promoters. May prevent the access of transcriptional activators to enhancers. Also acts as a transcriptional activator of APP. Involved in different aspects of gene regulation including promoter activation or repression, hormone-responsive gene silencing, methylation-dependent chromatin insulation, and genomic imprinting. Seems to act as tumor suppressor.,similarity:Belongs to the CTCF zinc-finger protein family.,similarity:Contains 11 C2H2-type zinc fingers.,subunit:Interacts with CHD8.,tissue specificity:Ubiquitous. Absent in primary spermatocytes.,





Background

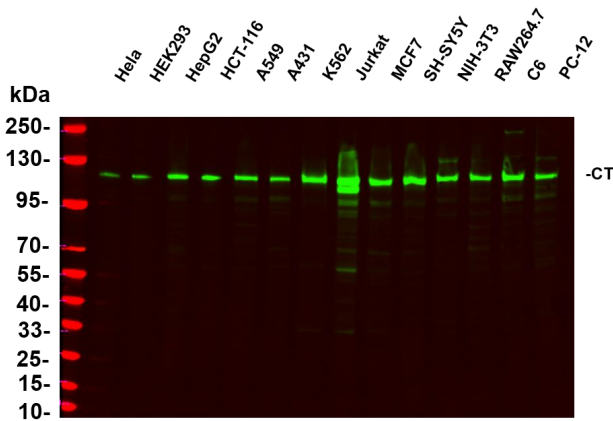
This gene is a member of the BORIS + CTCF gene family and encodes a transcriptional regulator protein with 11 highly conserved zinc finger (ZF) domains. This nuclear protein is able to use different combinations of the ZF domains to bind different DNA target sequences and proteins. Depending upon the context of the site, the protein can bind a histone acetyltransferase (HAT)-containing complex and function as a transcriptional activator or bind a histone deacetylase (HDAC)-containing complex and function as a transcriptional repressor. If the protein is bound to a transcriptional insulator element, it can block communication between enhancers and upstream promoters, thereby regulating imprinted expression. Mutations in this gene have been associated with invasive breast cancers, prostate cancers, and Wilms' tumors. Alternatively spliced transcript variants encoding different isoforms have been

matters needing attention

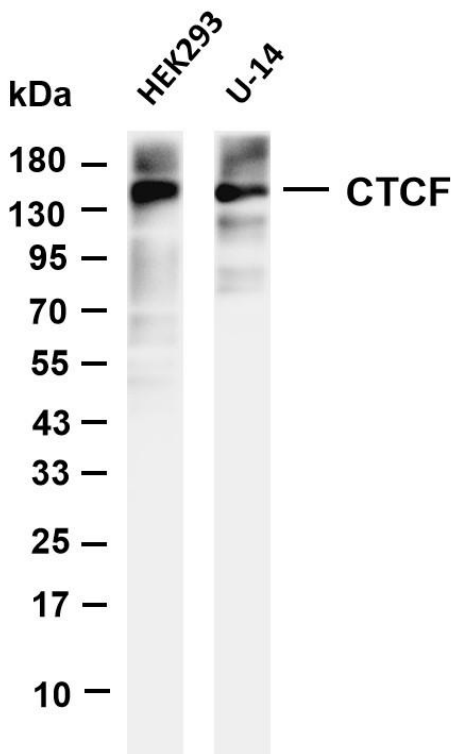
Avoid repeated freezing and thawing!

Usage suggestions

This product can be used in immunological reaction related experiments. For more information, please consult technical personnel.

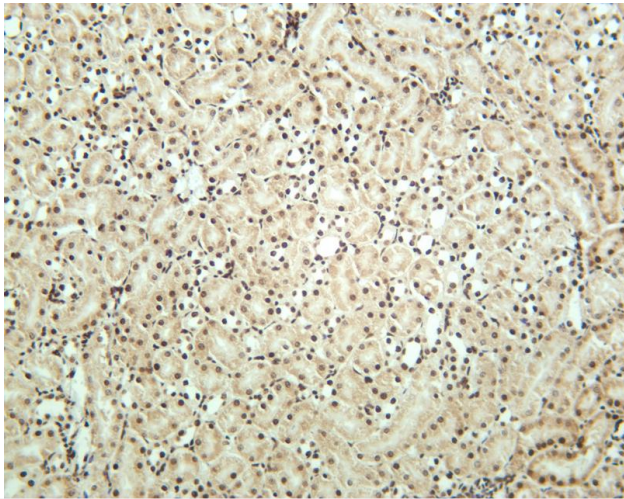


Various whole cell lysates were separated by 4-20% SDS-PAGE, and the primary antibody was used at 4~C, over night with a 1:5000 dilution. The Dylight 800-conjugated Goat anti-Rabbit antibody

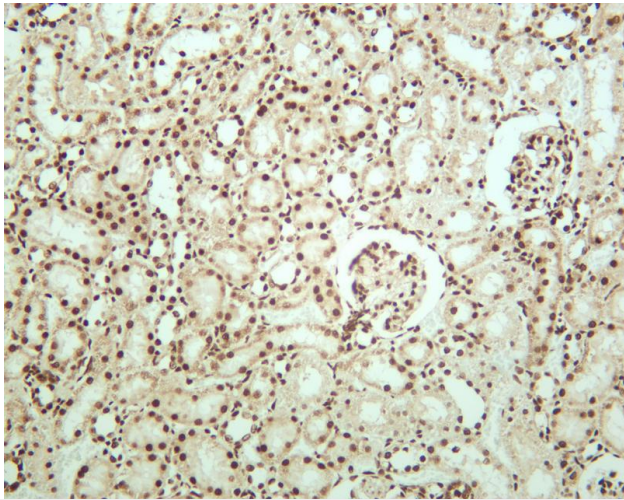


Various whole cell lysates were separated by 4-20% SDS-PAGE, and the membrane was blotted with anti-CTCF antibody. The HRP-conjugated Goat anti-Rabbit IgG(H + L) antibody was used to detect the antibody. Lane 1: HEK293 Lane 2: U-14 Predicted band size: 83kDa Observed band size: 140kDa

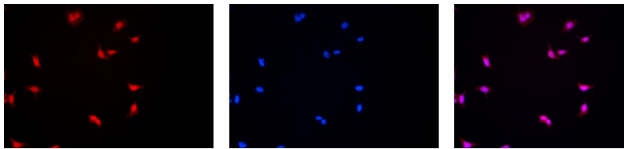




Mouse kidney was stained with anti-CTCF rabbit antibody



Rat kidney was stained with anti-CTCF rabbit antibody



Immunofluorescence analysis of HEK293. Picture A: CTCF antibody (red). Picture B: DAPI (blue). Picture C: Merge of A+B

A

B

C

