



# IFT88 Rabbit mAb

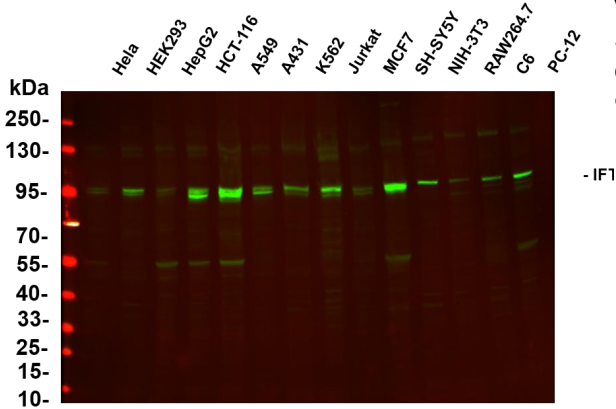
<b>Catalog No</b>	YP-rAb-17620
<b>Isotype</b>	IgG
<b>Reactivity</b>	Human,Mouse,Rat
<b>Applications</b>	WB,IF,ELISA
<b>Gene Name</b>	IFT88 TG737 TTC10
<b>Protein Name</b>	Intraflagellar transport protein 88 homolog (Recessive polycystic kidney disease protein Tg737 homolog) (Tetratricopeptide repeat protein 10) (TPR repeat protein 10)
<b>Purification Process</b>	Protein A
<b>Specificity</b>	Endogenous
<b>Formulation</b>	PBS, 50% glycerol, 0.05% Proclin 300, 0.05%BSA
<b>Source</b>	Monoclonal, Rabbit,IgG
<b>Dilution</b>	WB 1:2000-1:10000; IF 1:200-1:1000; ELISA 1:5000-1:20000;
<b>Concentration</b>	0.5 mg/ml
<b>Purity</b>	≥90%
<b>Storage Stability</b>	-15° C to -25° C/1 year(Do not lower than -25° C)
<b>Synonyms</b>	
<b>Observed Band</b>	94kD
<b>Calculated Molecular Weight</b>	94kD
<b>Cell Pathway</b>	Cytoplasm
<b>Tissue Specificity</b>	Expressed in the heart, brain, liver, lung, kidney, skeletal muscle and pancreas.
<b>Function</b>	Involved in primary cilium biogenesis. Also involved in autophagy since it is required for trafficking of ATG16L and the expansion of the autophagic compartment.
<b>Background</b>	This gene encodes a member of the tetratricopeptide repeat (TPR) family. The encoded protein is involved in cilium biogenesis. Mutations of a similar gene in mouse can cause polycystic kidney disease. Several transcript variants encoding distinct isoforms have been identified for this gene. [provided by RefSeq, Jul 2017]
<b>matters needing attention</b>	Avoid repeated freezing and thawing!



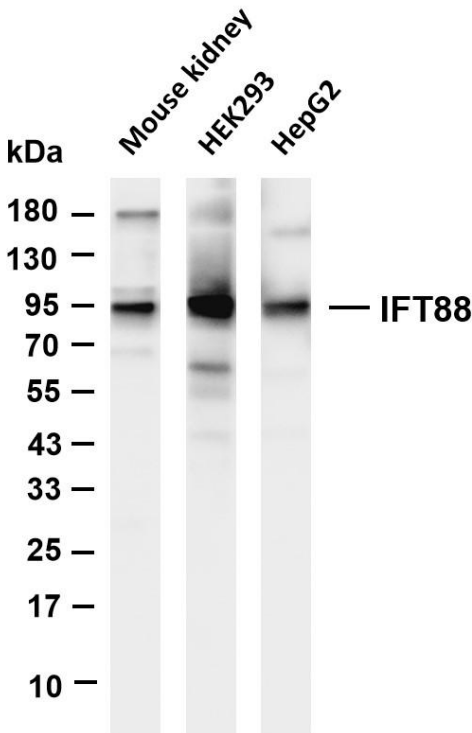


### Usage suggestions

This product can be used in immunological reaction related experiments. For more information, please consult technical personnel.



Various whole cell lysates were separated by 4-20% SDS-PAGE, and the primary antibody was used at 4~C, over night with a 1:5000 dilution. The Dylight 800-conjugated Goat anti-Rabbit antibody



Various whole cell lysates were separated by 4-20% SDS-PAGE, and the membrane was blotted with anti-IFT88 antibody. The HRP-conjugated Goat anti-Rabbit IgG(H + L) antibody was used to detect the antibody. Lane 1: Mouse kidney Lane 2: HEK293 Lane 3: HepG2 Predicted band size: 94kDa Observed band size: 94kDa

