



MYL9 Rabbit mAb

Catalog No	YP-rAb-17614
Isotype	IgG
Reactivity	Human,Mouse,Rat
Applications	WB,IHC,IF,ELISA
Gene Name	MYL9
Protein Name	Myosin regulatory light polypeptide 9
Purification Process	Protein A
Specificity	Endogenous
Formulation	PBS, 50% glycerol, 0.05% Proclin 300, 0.05%BSA
Source	Monoclonal, Rabbit,IgG
Dilution	IHC 1:200-1:1000; WB 1:2000-1:10000; IF 1:200-1:1000; ELISA 1:5000-1:20000; Note: For IHC, we suggest antigen retrieval with TE buffer pH 9.0
Concentration	0.5 mg/ml
Purity	≥90%
Storage Stability	-15° C to -25° C/1 year(Do not lower than -25° C)
Synonyms	MYL9 ; MLC2 ; MRLC1 ; MYRL2 ; Myosin regulatory light polypeptide 9 ; 20 kDa myosin light chain ; LC20 ; MLC-2C ; Myosin RLC ; Myosin regulatory light chain 2 ; smooth muscle isoform ; Myosin regulatory light chain 9 ; Myosin regulatory light chain MRL
Observed Band	20kD
Calculated Molecular Weight	20kD
Cell Pathway	Cytoplasm
Tissue Specificity	Smooth muscle tissues and in some, but not all, nonmuscle cells.
Function	Myosin regulatory subunit that plays an important role in regulation of both smooth muscle and nonmuscle cell contractile activity via its phosphorylation. Implicated in cytokinesis, receptor capping, and cell locomotion.,miscellaneous:This chain binds calcium.,PTM:Phosphorylation increases the actin-activated myosin ATPase activity and thereby regulates the contractile activity. It is required to generate the driving force in the migration of the cells but not necessary for localization of myosin-2 at the leading edge.,similarity:Contains 3 EF-hand domains.,subunit:Myosin is a hexamer of 2 heavy chains and 4 light chains.,tissue specificity:Smooth muscle tissues and in some, but not all,





nonmuscle cells.,

Background

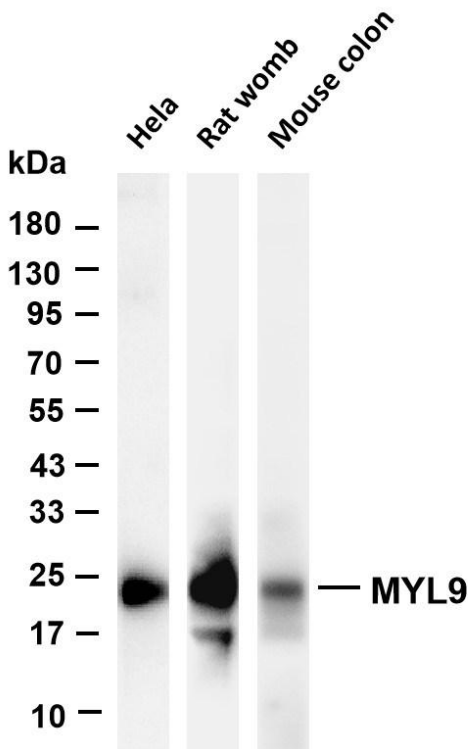
Myosin, a structural component of muscle, consists of two heavy chains and four light chains. The protein encoded by this gene is a myosin light chain that may regulate muscle contraction by modulating the ATPase activity of myosin heads. The encoded protein binds calcium and is activated by myosin light chain kinase. Two transcript variants encoding different isoforms have been found for this gene. [provided by RefSeq, Jul 2008],

matters needing attention

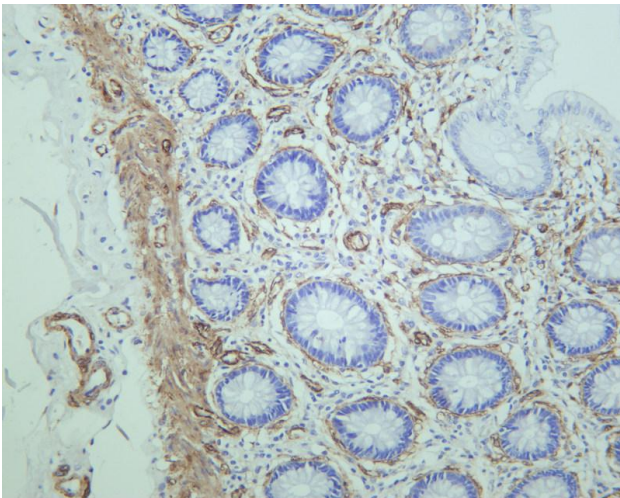
Avoid repeated freezing and thawing!

Usage suggestions

This product can be used in immunological reaction related experiments. For more information, please consult technical personnel.



Various whole cell lysates were separated by 4-20% SDS-PAGE, and the membrane was blotted with anti-MYL9 antibody. The HRP-conjugated Goat anti-Rabbit IgG(H + L) antibody was used to detect the antibody. Lane 1: HeLa Lane 2: Rat womb Predicted band size: 20kDa Observed band size: 20kDa



Human colon was stained with anti-MYL9 rabbit antibody

杭州臻优品生物科技有限公司

热销产品:

蛋白、一抗、抗体对、ELISA试剂盒、生化试剂盒
CCK8试剂盒、QPCR检测试剂盒

检测服务:

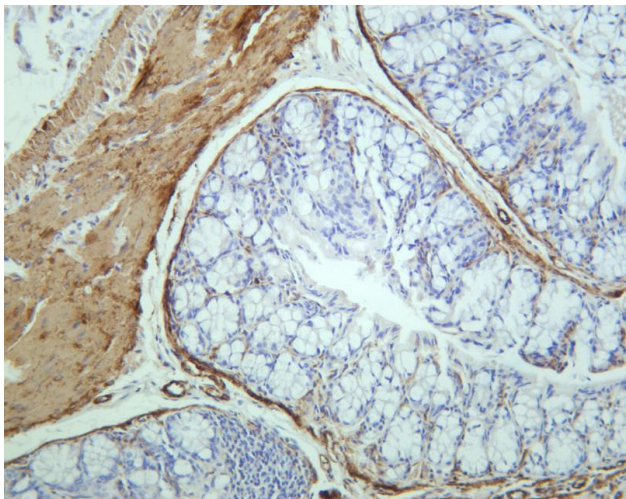
ELISA检测及定制服务 | 生化检测 | PCR、QPCR检测 | WB检测
ICO-IP检测 | 切片 | 染色 | 免疫组化 | 免疫荧光 | 透射电镜全套
| 宏基因组、转录组、基因组、蛋白组、代谢组测序



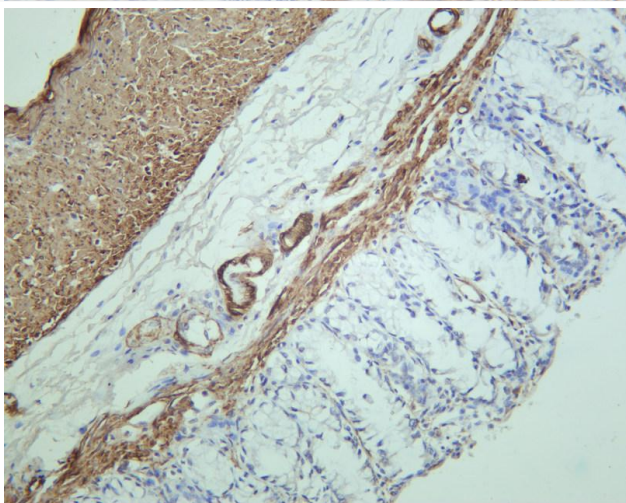
关注官网



关注客服



Mouse colon was stained with anti-MYL9 rabbit antibody



Rat colon was stained with anti-MYL9 rabbit antibody

