



Cdc25C Rabbit mAb

Catalog No	YP-rAb-17611
Isotype	IgG
Reactivity	Human,Mouse,Rat
Applications	WB,IHC,IF,IP,ELISA
Gene Name	CDC25C
Protein Name	M-phase inducer phosphatase 3
Purification Process	Protein A
Specificity	Endogenous
Formulation	PBS, 50% glycerol, 0.05% Proclin 300, 0.05%BSA
Source	Monoclonal, Rabbit,IgG
Dilution	IHC 1:1000-1:4000; WB 1:2000-1:10000; IF 1:200-1:1000; ELISA 1:5000-1:20000; IP 1:50-1:200; Note: For IHC, we suggest antigen retrieval with TE buffer pH 9.0
Concentration	0.5 mg/ml
Purity	≥90%
Storage Stability	-15° C to -25° C/1 year(Do not lower than -25° C)
Synonyms	CDC25C ; M-phase inducer phosphatase 3 ; Dual specificity phosphatase Cdc25C
Observed Band	60kD
Calculated Molecular Weight	53kD
Cell Pathway	Nucleus
Tissue Specificity	Colon carcinoma,Epithelium,Skin,Testis,
Function	Catalytic activity:Protein tyrosine phosphate + H(2)O = protein tyrosine + phosphate.,developmental stage:Expressed predominantly in G2 phase.,Function:Functions as a dosage-dependent inducer in mitotic control. It is a tyrosine protein phosphatase required for progression of the cell cycle. It directly dephosphorylates CDC2 and activate its kinase activity.,PTM:Phosphorylated by CHK1 on Ser-216. This phosphorylation creates a binding site for 14-3-3 protein and inhibits the phosphatase.,similarity:Belongs to the MPI phosphatase family.,similarity:Contains 1 rhodanese domain.,subunit:Interacts with HIV-1 Vpr, thereby inactivating CDC25C phosphatase activity.,





Background

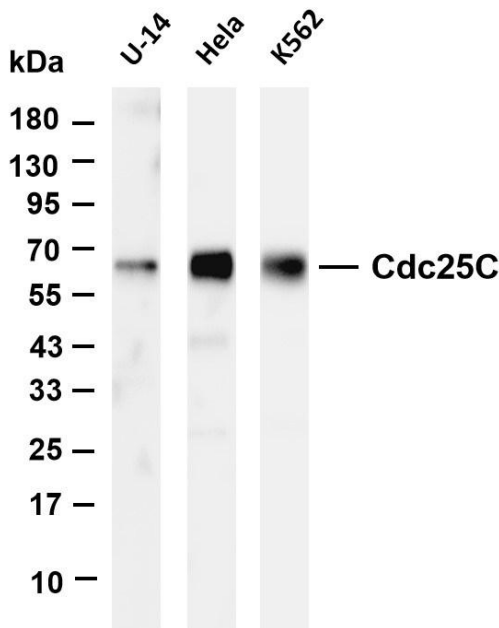
cell division cycle 25C(CDC25C) Homo sapiens This gene encodes a conserved protein that plays a key role in the regulation of cell division. The encoded protein directs dephosphorylation of cyclin B-bound CDC2 and triggers entry into mitosis. It also suppresses p53-induced growth arrest. Multiple alternatively spliced transcript variants of this gene have been described. [provided by RefSeq, Dec 2015],

matters needing attention

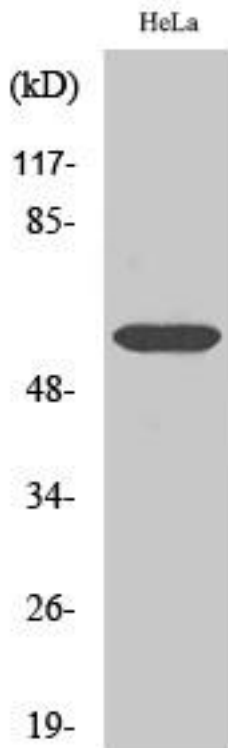
Avoid repeated freezing and thawing!

Usage suggestions

This product can be used in immunological reaction related experiments. For more information, please consult technical personnel.



Various whole cell lysates were separated by 4-20% SDS-PAGE, and the membrane was blotted with anti-Cdc25C antibody. The HRP-conjugated Goat anti-Rabbit IgG(H + L) antibody was used to detect the antibody. Lane 1: U-14 Lane 2: HeLa Lane 3: K562 Predicted band size: 53kDa Observed band size: 60kDa



Western Blot analysis of various cells using Cdc25C Antibody

杭州臻优品生物科技有限公司

热销产品:

蛋白、一抗、抗体对、ELISA试剂盒、生化试剂盒
CCK8试剂盒、QPCR检测试剂盒

检测服务:

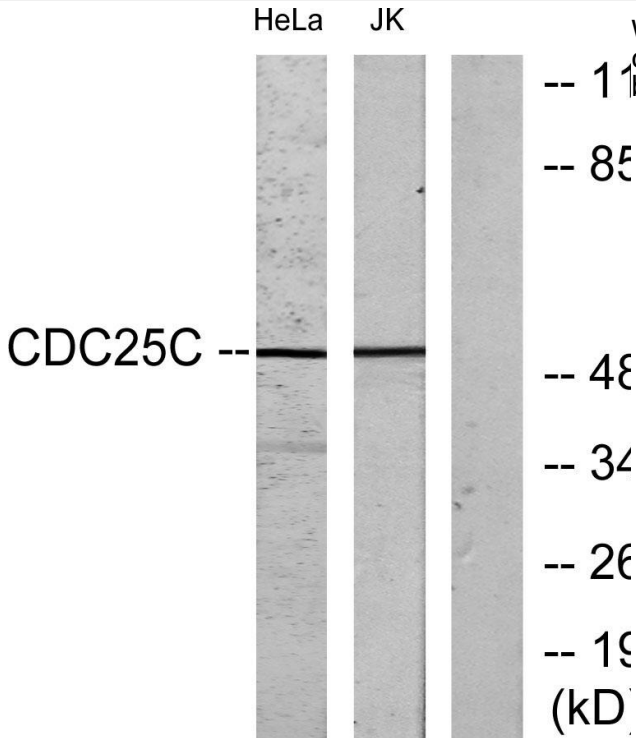
ELISA检测及定制服务 | 生化检测 | PCR、QPCR检测 | WB检测
ICO-IP检测 | 切片 | 染色 | 免疫组化 | 免疫荧光 | 透射电镜全套
| 宏基因组、转录组、基因组、蛋白组、代谢组测序



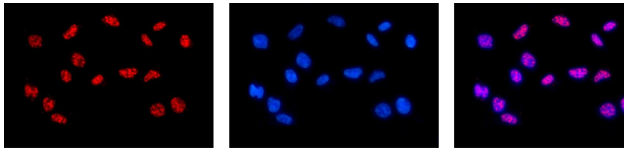
关注官网



关注客服



Western blot analysis of lysates from HeLa and Jurkat cells, using CDC25C Antibody. The lane on the right is blocked with the synthesized peptide.



Immunofluorescence analysis of HEK293. Picture A: Cdc25C antibody (red). Picture B: DAPI (blue). Picture C: Merge of A+B

A B C

