



# PAX-8 Rabbit mAb

<b>Catalog No</b>	YP-rAb-17606
<b>Isotype</b>	IgG
<b>Reactivity</b>	Human,Mouse,Rat
<b>Applications</b>	WB,IHC,IF,ELISA
<b>Gene Name</b>	PAX8
<b>Protein Name</b>	PAX-8
<b>Purification Process</b>	Protein A
<b>Specificity</b>	Endogenous
<b>Formulation</b>	PBS, 50% glycerol, 0.05% Proclin 300, 0.05%BSA
<b>Source</b>	Monoclonal, Rabbit,IgG
<b>Dilution</b>	IHC 1:200-1:1000; WB 1:2000-1:10000; IF 1:200-1:1000; ELISA 1:5000-1:20000; Note: For IHC, we suggest antigen retrieval with TE buffer pH 9.0
<b>Concentration</b>	0.5 mg/ml
<b>Purity</b>	≥90%
<b>Storage Stability</b>	-15° C to -25° C/1 year(Do not lower than -25° C)
<b>Synonyms</b>	Paired box protein Pax-8
<b>Observed Band</b>	55kD
<b>Calculated Molecular Weight</b>	48kD
<b>Cell Pathway</b>	Nucleus
<b>Tissue Specificity</b>	Expressed in the excretory system, thyroid gland and Wilms tumors.
<b>Function</b>	Caution:The sequence shown here is derived from an Ensembl automatic analysis pipeline and should be considered as preliminary data.,developmental stage:In developing excretory system, during thyroid differentiation and in adult thyroid.,Disease:Defects in PAX8 are the cause of congenital hypothyroidism non-goitrous type 2 (CHNG2) [MIM:218700]. CHNG2 is a disease characterized by thyroid dysgenesis, the most frequent cause of congenital hypothyroidism, accounting for 85% of case. The thyroid gland can be completely absent (athyreosis), ectopically located and/or severely hypoplastic. Ectopic thyroid gland is the most frequent malformation, with thyroid tissue being found most often at the base of the tongue.,Function:Transcription factor for the thyroid-specific expression of the genes exclusively expressed in the thyroid cell type, maintaining the functional differentiation of such cells.,similarity:Contains 1 paired domain.,tissue specificity:Expressed in the excretory system, thyroid gland and





Wilms tumors.,

**Background**

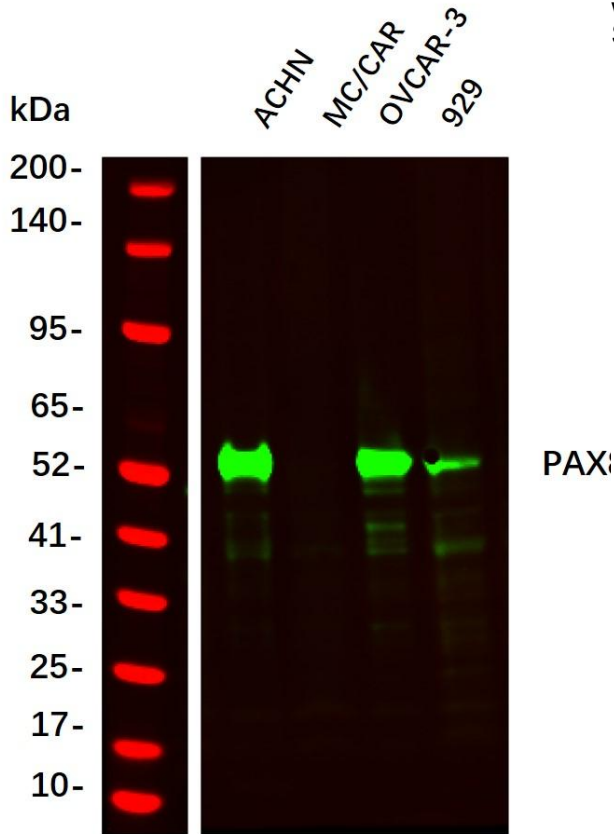
This gene encodes a member of the paired box (PAX) family of transcription factors. Members of this gene family typically encode proteins that contain a paired box domain, an octapeptide, and a paired-type homeodomain. This nuclear protein is involved in thyroid follicular cell development and expression of thyroid-specific genes. Mutations in this gene have been associated with thyroid dysgenesis, thyroid follicular carcinomas and atypical follicular thyroid adenomas. Alternatively spliced transcript variants encoding different isoforms have been described. [provided by RefSeq, Mar 2010]

**matters needing attention**

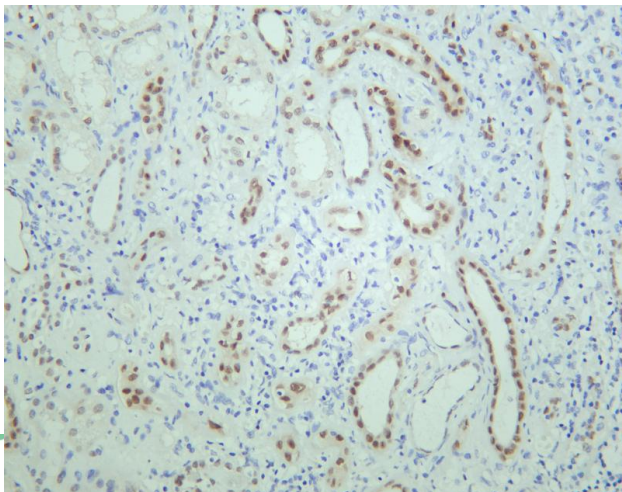
Avoid repeated freezing and thawing!

**Usage suggestions**

This product can be used in immunological reaction related experiments. For more information, please consult technical personnel.



Western Blot analysis using various cell lysate, Proteins were separated by 4-20% SDS-PAGE, and the membrane was blotted with PAX8 Rabbit mAb diluted at 1:2000. Secondary :Dylight 800, Goat Anti Rabbit IgG(



Human kidney was stained with anti-PAX-8 rabbit antibody

**热销产品:**

蛋白、一抗、抗体对、ELISA试剂盒、生化试剂盒  
CCK8试剂盒、QPCR检测试剂盒

**检测服务:**

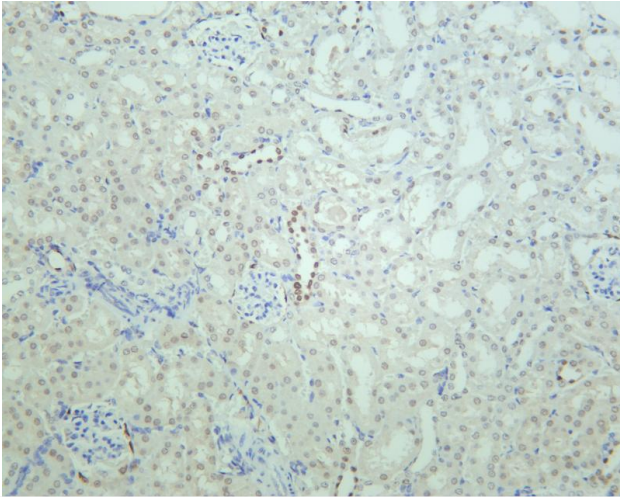
ELISA检测及定制服务 | 生化检测 | PCR、QPCR检测 | WB检测  
ICO-IP检测 | 切片 | 染色 | 免疫组化 | 免疫荧光 | 透射电镜全套  
| 宏基因组、转录组、基因组、蛋白组、代谢组测序



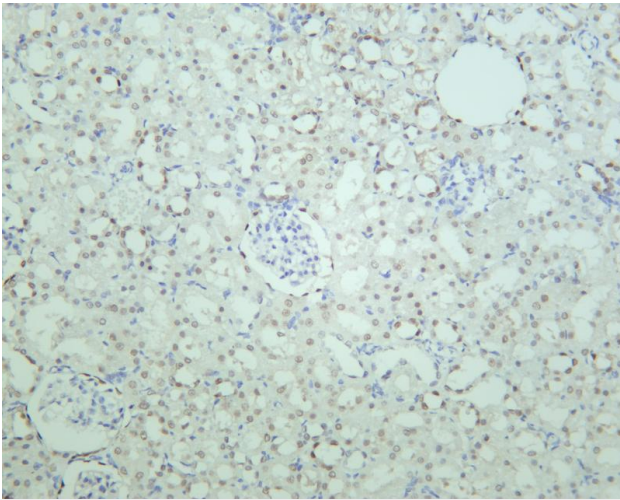
关注官网



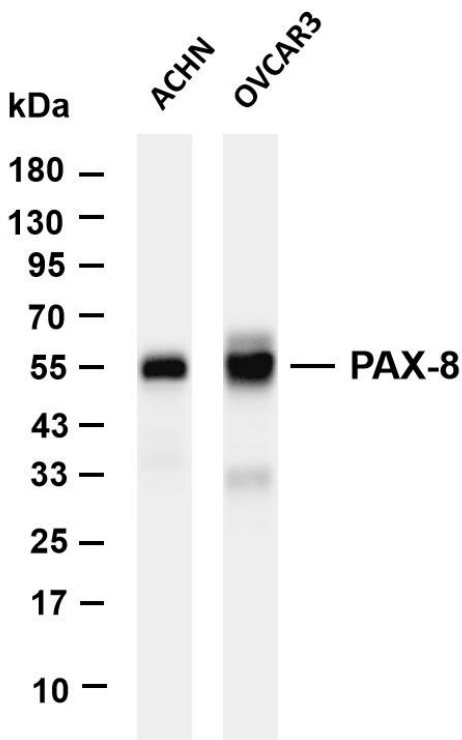
关注客服



Mouse kidney was stained with anti-PAX-8 rabbit antibody



Rat kidney was stained with anti-PAX-8 rabbit antibody



Various whole cell lysates were separated by 4-20% SDS-PAGE, and the membrane was blotted with anti-PAX-8 antibody. The HRP-conjugated Goat anti-Rabbit IgG(H + L) antibody was used to detect the antibody. Lane 1: ACHN Lane 2: OVCA83 Predicted band size: 48kDa Observed band size: 55kDa

