



# Endoplasmin Rabbit mAb

<b>Catalog No</b>	YP-rAb-17598
<b>Isotype</b>	IgG
<b>Reactivity</b>	Human,Mouse,Rat
<b>Applications</b>	WB,IHC,IF,IP,ELISA
<b>Gene Name</b>	HSP90B1
<b>Protein Name</b>	Endoplasmin
<b>Purification Process</b>	Protein A
<b>Specificity</b>	Endogenous
<b>Formulation</b>	PBS, 50% glycerol, 0.05% Proclin 300, 0.05%BSA
<b>Source</b>	Monoclonal, Rabbit,IgG
<b>Dilution</b>	IHC 1:1000-1:5000; WB 1:2000-1:10000; IF 1:200-1:1000; ELISA 1:5000-1:20000; IP 1:50-1:200; Note: For IHC, we suggest antigen retrieval with TE buffer pH 9.0
<b>Concentration</b>	0.5 mg/ml
<b>Purity</b>	≥90%
<b>Storage Stability</b>	-15° C to -25° C/1 year(Do not lower than -25° C)
<b>Synonyms</b>	HSP90B1 ; GRP94 ; TRA1 ; Endoplasmin ; 94 kDa glucose-regulated protein ; GRP-94 ; Heat shock protein 90 kDa beta member 1 ; Tumor rejection antigen 1 ; gp96 homolog
<b>Observed Band</b>	100kD
<b>Calculated Molecular Weight</b>	93kD
<b>Cell Pathway</b>	Endoplasmic reticulum
<b>Tissue Specificity</b>	Blood,Brain,Liver,Lung,Platelet,Skin,
<b>Function</b>	Molecular chaperone that functions in the processing and transport of secreted proteins. Has ATPase activity.,PTM:Phosphorylated.,similarity:Belongs to the heat shock protein 90 family.,subcellular location:Identified by mass spectrometry in melanosome fractions from stage I to stage IV.,subunit:Homodimer; disulfide-linked. Component of an EIF2 complex at least composed of CUGBP1, CALR, CALR3, EIF2S1, EIF2S2, HSP90B1 and HSPA5 (By similarity). Part a large chaperone multiprotein complex comprising CABP1, DNAJB11, HSP90B1, HSPA5, HYOU, PDIA2, PDIA4, PPIB, SDF2L1, UGT1A1 and very small amounts of ERP29, but not, or at very low levels, CALR nor CANX.,





## Background

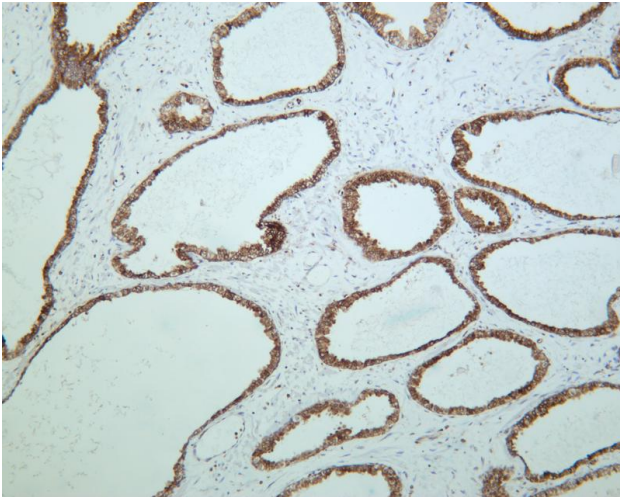
This gene encodes a member of a family of adenosine triphosphate(ATP)-metabolizing molecular chaperones with roles in stabilizing and folding other proteins. The encoded protein is localized to melanosomes and the endoplasmic reticulum. Expression of this protein is associated with a variety of pathogenic states, including tumor formation. There is a microRNA gene located within the 5' exon of this gene. There are pseudogenes for this gene on chromosomes 1 and 15. [provided by RefSeq, Aug 2012],

## matters needing attention

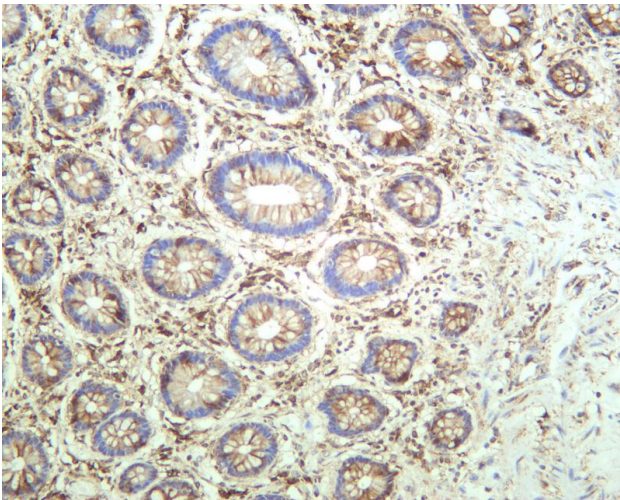
Avoid repeated freezing and thawing!

## Usage suggestions

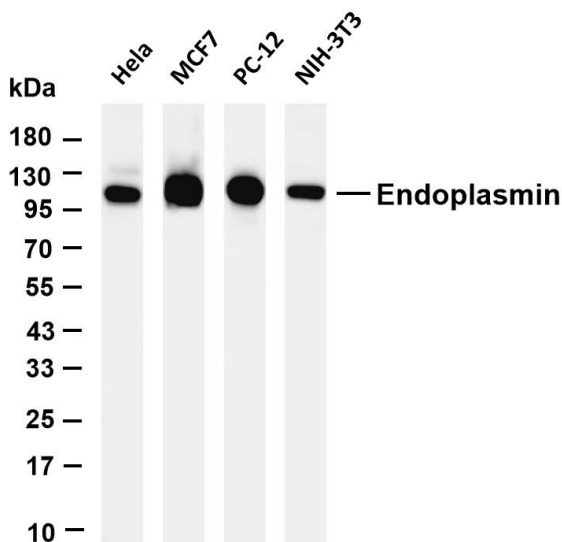
This product can be used in immunological reaction related experiments. For more information, please consult technical personnel.



Human prostate was stained with anti-Endoplasmic reticulum protein rabbit antibody

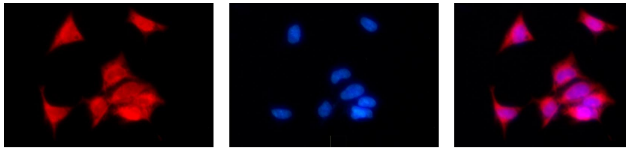


Human colon was stained with anti-Endoplasmic reticulum protein rabbit antibody



Various whole cell lysates were separated by 4-20% SDS-PAGE, and the membrane was blotted with anti-Endoplasmic reticulum protein antibody. The HRP-conjugated Goat anti-Rabbit IgG(H + L) antibody was used to detect the antibody. Lane 1: HeLa Lane 2: MCF7 Lane 3: PC-12 Lane 4: NIH-3T3 Predicted band size: 93kDa Observed band size: 100kDa





A

B

C

Immunofluorescence analysis of HEK293. Picture A: Endoplasmic reticulum antibody (red). Picture B: DAPI (blue). Picture C: Merge of A+B

## 杭州臻优品生物科技有限公司

### 热销产品:

蛋白、一抗、抗体对、ELISA试剂盒、生化试剂盒  
CCK8试剂盒、QPCR检测试剂盒

### 检测服务:

ELISA检测及定制服务 | 生化检测 | PCR、QPCR检测 | WB检测  
ICO-IP检测 | 切片 | 染色 | 免疫组化 | 免疫荧光 | 透射电镜全套  
| 宏基因组、转录组、基因组、蛋白组、代谢组测序



关注官网



关注客服