



Thrombospondin 1 Rabbit mAb

Catalog No	YP-rAb-17593
Isotype	IgG
Reactivity	Human,Mouse,Rat
Applications	WB,IHC,IF,IP,ELISA
Gene Name	THBS1 TSP TSP1
Protein Name	Thrombospondin 1
Purification Process	Protein A
Specificity	Endogenous
Formulation	PBS, 50% glycerol, 0.05% Proclin 300, 0.05%BSA
Source	Monoclonal, Rabbit,IgG
Dilution	IHC 1:200-1:1000; WB 1:2000-1:10000; IF 1:200-1:1000; ELISA 1:5000-1:20000; IP 1:50-1:200; Note: For IHC, we suggest antigen retrieval with TE buffer pH 9.0
Concentration	0.5 mg/ml
Purity	≥90%
Storage Stability	-15° C to -25° C/1 year(Do not lower than -25° C)
Synonyms	Thrombospondin-1
Observed Band	170kD
Calculated Molecular Weight	130kD
Cell Pathway	Secreted
Tissue Specificity	Aorta endothelial cell,Endothelial cell,Liver,Plasma,Platelet,Saliva,
Function	Adhesive glycoprotein that mediates cell-to-cell and cell-to-matrix interactions. Can bind to fibrinogen, fibronectin, laminin, type V collagen and integrins alpha-V/beta-1, alpha-V/beta-3 and alpha-IIb/beta-3.,similarity:Belongs to the thrombospondin family.,similarity:Contains 1 TSP C-terminal (TSPC) domain.,similarity:Contains 1 TSP N-terminal (TSPN) domain.,similarity:Contains 1 VWFC domain.,similarity:Contains 3 EGF-like domains.,similarity:Contains 3 TSP type-1 domains.,similarity:Contains 8 TSP type-3 repeats.,subunit:Homotrimer; disulfide-linked.,
Background	thrombospondin 1(THBS1) Homo sapiens The protein encoded by this gene is a subunit of a disulfide-linked homotrimeric protein. This protein is an adhesive glycoprotein that mediates cell-to-cell and cell-to-matrix interactions. This protein can bind to fibrinogen, fibronectin, laminin, type V collagen and integrins





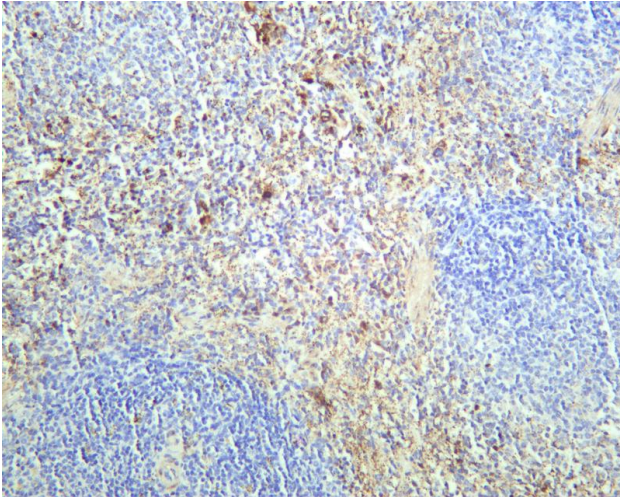
alpha-V/beta-1. This protein has been shown to play roles in platelet aggregation, angiogenesis, and tumorigenesis. [provided by RefSeq, Jul 2008],

matters needing attention

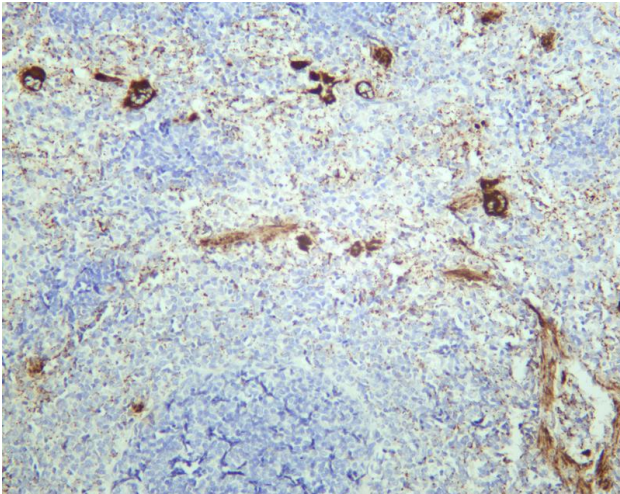
Avoid repeated freezing and thawing!

Usage suggestions

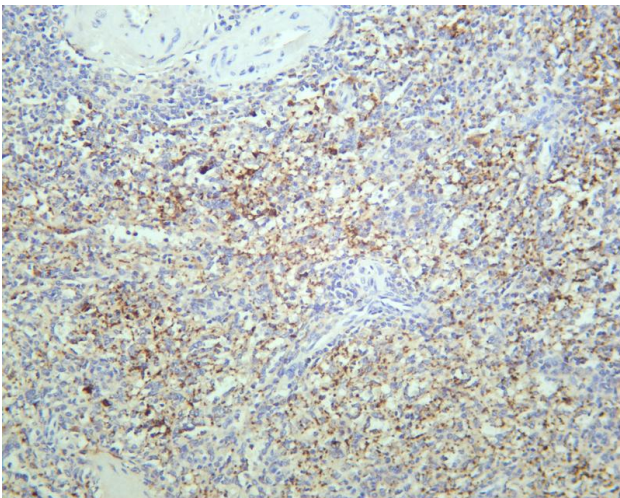
This product can be used in immunological reaction related experiments. For more information, please consult technical personnel.



Mouse spleen was stained with anti-Thrombospondin 1 rabbit antibody



Rat spleen was stained with anti-Thrombospondin 1 rabbit antibody



Human spleen was stained with anti-Thrombospondin 1 rabbit antibody

杭州臻优品生物科技有限公司

热销产品:

蛋白、一抗、抗体对、ELISA试剂盒、生化试剂盒
CCK8试剂盒、QPCR检测试剂盒

检测服务:

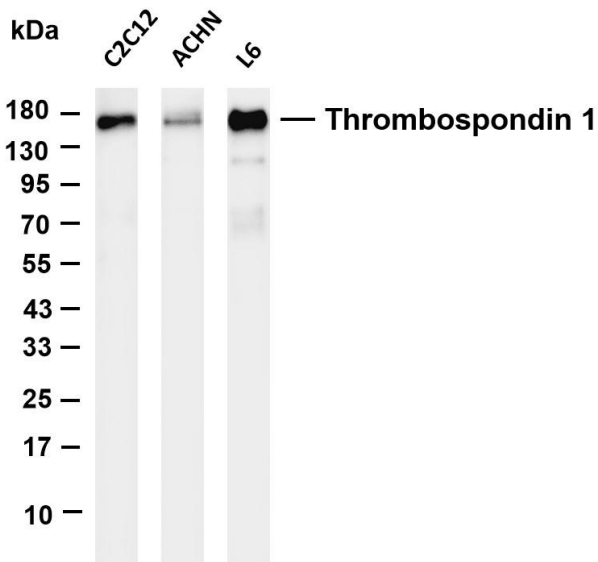
ELISA检测及定制服务 | 生化检测 | PCR、QPCR检测 | WB检测
ICO-IP检测 | 切片 | 染色 | 免疫组化 | 免疫荧光 | 透射电镜全套
| 宏基因组、转录组、基因组、蛋白组、代谢组测序



关注官网



关注客服



Various whole cell lysates were separated by 4-20% SDS-PAGE, and the membrane was blotted with anti-Thrombospondin 1 antibody. The HRP-conjugated Goat anti-Rabbit IgG(H + L) antibody was used to detect the antibody. Lane 1: C2C12 Lane 2: ACHN Lane 3: L6 Predicted band size: 130kDa Observed band size: 170kDa

