



IL-1 β Rabbit mAb

Catalog No	YP-rAb-17591
Isotype	IgG
Reactivity	Human,Mouse,Rat
Applications	WB,IF,IP,ELISA
Gene Name	IL1B IL1F2
Protein Name	Interleukin-1 beta (IL-1 beta) (Catabolin)
Purification Process	Protein A
Specificity	Endogenous
Formulation	PBS, 50% glycerol, 0.05% Proclin 300, 0.05%BSA
Source	Monoclonal, Rabbit,IgG
Dilution	WB 1:2000-1:10000; IF 1:200-1:1000; ELISA 1:5000-1:20000; IP 1:50-1:200;
Concentration	0.5 mg/ml
Purity	$\geq 90\%$
Storage Stability	-15° C to -25° C/1 year(Do not lower than -25° C)
Synonyms	IL1B ; IL1F2 ; Interleukin-1 beta ; IL-1 beta ; Catabolin
Observed Band	pro:31kD,mature:17kD
Calculated Molecular Weight	31kD
Cell Pathway	Secreted
Tissue Specificity	Expressed in activated monocytes/macrophages (at protein level).
Function	<p>Domain:The similarity among the IL-1 precursors suggests that the amino ends of these proteins serve some as yet undefined function.,Function:Produced by activated macrophages, IL-1 stimulates thymocyte proliferation by inducing IL-2 release, B-cell maturation and proliferation, and fibroblast growth factor activity. IL-1 proteins are involved in the inflammatory response, being identified as endogenous pyrogens, and are reported to stimulate the release of prostaglandin and collagenase from synovial cells.,online information:Interleukin-1 entry,online information:The Singapore human mutation and polymorphism database,similarity:Belongs to the IL-1 family.,subcellular location:The lack of a specific hydrophobic segment in the precursor sequence suggests that IL-1 is released by damaged cells or is secreted by a mechanism differing from that used for other secretory proteins.,subunit:Monomer.,</p>





Background

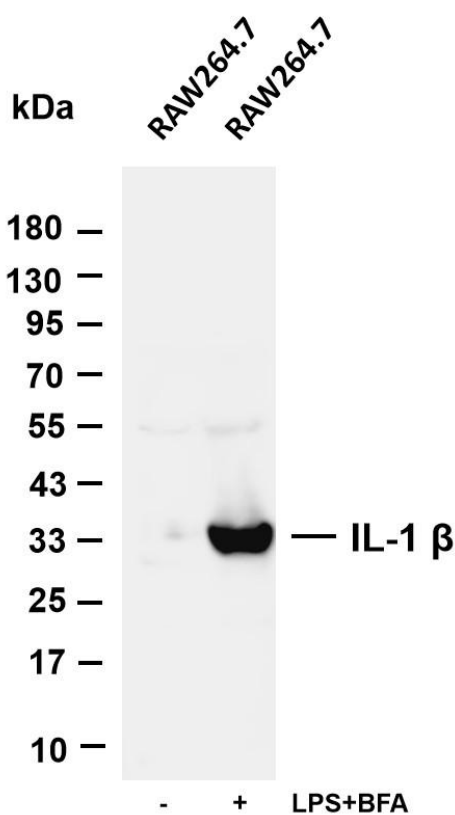
interleukin 1 beta(IL1B) Homo sapiens The protein encoded by this gene is a member of the interleukin 1 cytokine family. This cytokine is produced by activated macrophages as a proprotein, which is proteolytically processed to its active form by caspase 1 (CASP1/ICE). This cytokine is an important mediator of the inflammatory response, and is involved in a variety of cellular activities, including cell proliferation, differentiation, and apoptosis. The induction of cyclooxygenase-2 by this cytokine in the central nervous system (CNS) is found to contribute to inflammatory pain hypersensitivity. This gene and eight other interleukin 1 family genes form a cytokine gene cluster on chromosome 2. [provided by RefSeq, Jul 2008],

matters needing attention

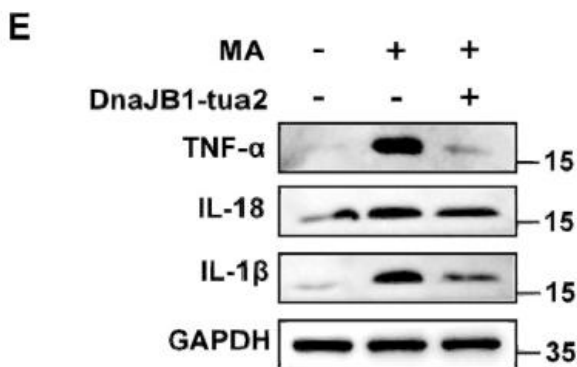
Avoid repeated freezing and thawing!

Usage suggestions

This product can be used in immunological reaction related experiments. For more information, please consult technical personnel.

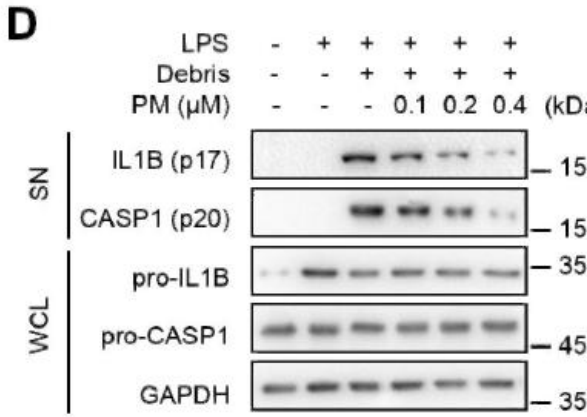


Various whole cell lysates were separated by 4-20% SDS-PAGE, and the membrane was blotted with anti-IL-1 β antibody. The HRP-conjugated Goat anti-Rabbit IgG(H + L) antibody was used to detect the antibody. Lane 1: RAW264.7 Lane 2: RAW264.7 was treated with Lipopolysaccharide (0.1 μ g/mL) for 4 hou

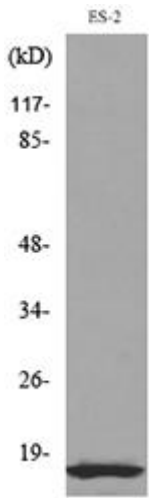


A novel gene therapy for methamphetamine- induced cognitive disorder with a hyper-acidified fusion variant of DnaJB1 Molecular Therapy-Nucleic Acids Zhurong Zou WB Mouse hippocampus BV2 cell

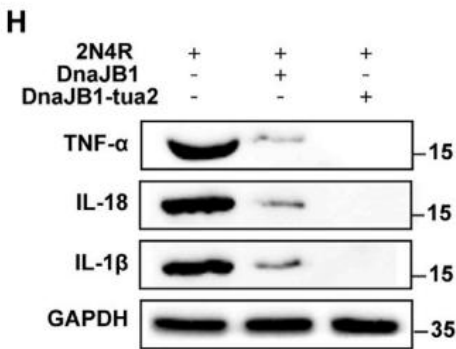




Pristimerin suppresses AIM2 inflammasome by modulating AIM2-PYCARD/ASC stability via selective autophagy to alleviate tendinopathy. Autophagy
Xiao Yu WB Mouse
Achilles tendon Peritoneal macrophages



Western blot analysis of lysate from ES-2 cells, using IL1B Antibody.



A novel gene therapy for methamphetamine- induced cognitive disorder with a hyper-acidified fusion variant of DnaJB1 Molecular Therapy-Nucleic Acids Zhurong Zou WB Mouse hippocampus BV2 cell

