



PLK1 Rabbit mAb

Catalog No	YP-rAb-17587
Isotype	IgG
Reactivity	Human,Mouse,Rat
Applications	WB,IHC,IF,IP,ELISA
Gene Name	PLK1 PLK
Protein Name	PLK1
Purification Process	Protein A
Specificity	Endogenous
Formulation	PBS, 50% glycerol, 0.05% Proclin 300, 0.05%BSA
Source	Monoclonal, Rabbit,IgG
Dilution	IHC 1:200-1:1000; WB 1:2000-1:10000; IF 1:200-1:1000; ELISA 1:5000-1:20000; IP 1:50-1:200; Note: For IHC, we suggest antigen retrieval with TE buffer pH 9.0
Concentration	0.5 mg/ml
Purity	≥90%
Storage Stability	-15° C to -25° C/1 year(Do not lower than -25° C)
Synonyms	Serine/threonine-protein kinase PLK1 ; Polo-like kinase 1 ; PLK-1 ; Serine/threonine-protein kinase 13 ; STPK13 ;
Observed Band	68kD
Calculated Molecular Weight	68kD
Cell Pathway	Nucleus
Tissue Specificity	Placenta and colon.
Function	Catalytic activity:ATP + a protein = ADP + a phosphoprotein.,developmental stage:Accumulates to a maximum during the G2 and M phases, declines to a nearly undetectable level following mitosis and throughout G1 phase, and then begins to accumulate again during S phase.,enzyme regulation:Activated by serine and threonine phosphorylation.,Function:Serine/threonine-protein kinase that performs several important functions throughout M phase of the cell cycle, including the regulation of centrosome maturation and spindle assembly, the removal of cohesins from chromosome arms, the inactivation of APC/C inhibitors, and the regulation of mitotic exit and cytokinesis.,induction:By growth-stimulating agents.,PTM:Autophosphorylation and phosphorylation of Ser-137 are not significant events during activation of PLK1 in M phase.,PTM:Catalytic activity is enhanced by phosphorylation of Thr-210 and/or Ser-137.,similarity:Belongs to the

杭州臻优品生物科技有限公司

热销产品:

蛋白、一抗、抗体对、ELISA试剂盒、生化试剂盒
CCK8试剂盒、QPCR检测试剂盒

检测服务:

ELISA检测及定制服务 | 生化检测 | PCR、QPCR检测 | WB检测
| CO-IP检测 | 切片 | 染色 | 免疫组化 | 免疫荧光 | 透射电镜全套
| 宏基因组、转录组、基因组、蛋白组、代谢组测序



关注官网



关注客服



protein kinase superfamily.,similarity:Belongs to the protein kinase superfamily. Ser/Thr protein kinase family. CDC5/Polo subfamily.,similarity:Contains 1 protein kinase domain.,similarity:Contains 2 POLO box domains.,subunit:Interacts with CEP170 and EVI5. Interacts and phosphorylates ERCC6L. Interacts with FAM29A.,tissue specificity:Placenta and colon.,

Background

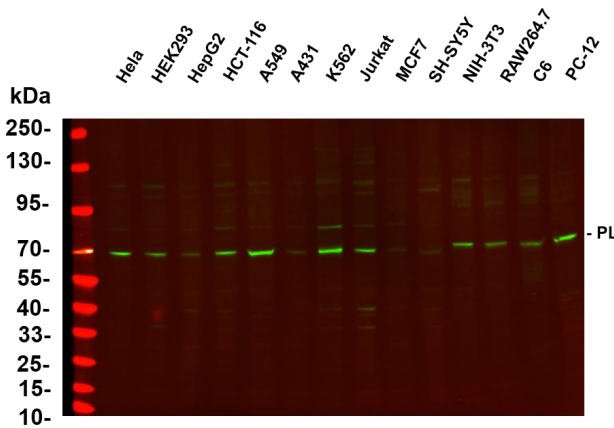
The Ser/Thr protein kinase encoded by this gene belongs to the CDC5/Polo subfamily. It is highly expressed during mitosis and elevated levels are found in many different types of cancer. Depletion of this protein in cancer cells dramatically inhibited cell proliferation and induced apoptosis; hence, it is a target for cancer therapy. [provided by RefSeq, Sep 2015],

matters needing attention

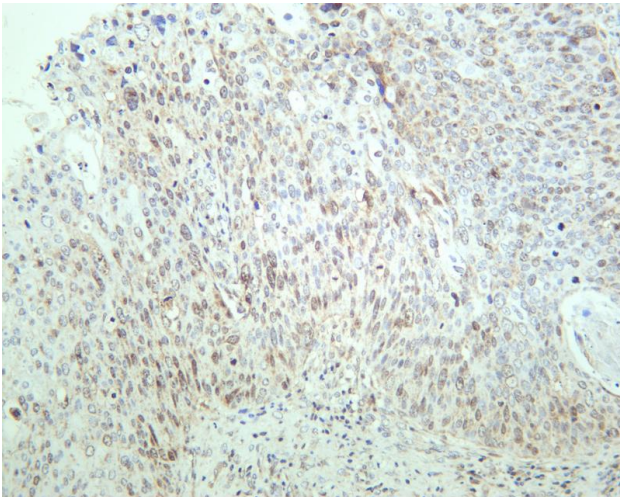
Avoid repeated freezing and thawing!

Usage suggestions

This product can be used in immunological reaction related experiments. For more information, please consult technical personnel.

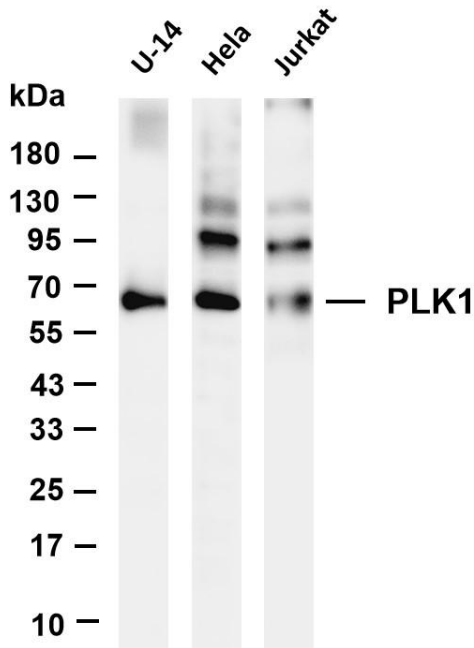


Various whole cell lysates were separated by 4-20% SDS-PAGE, and the primary antibody was used at 4~C, over night with a 1:5000 dilution . The Dylight 800-conjugated Goat anti-Rabbit antibody

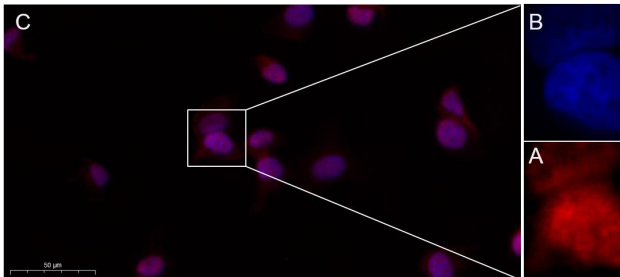


Human cervical carcinoma was stained with anti-PLK1 rabbit antibody





Various whole cell lysates were separated by 4-20% SDS-PAGE, and the membrane was blotted with anti-PLK1 antibody. The HRP-conjugated Goat anti-Rabbit IgG(H + L) antibody was used to detect the antibody. Lane 1: U-14 Lane 2: HeLa Lane 3: Jurkat Predicted band size: 68kDa Observed band size: 68kDa



Immunofluorescence analysis of HeLa. Picture A: PLK1 Rabbit mAb (red). Picture B: DAPI (blue). Picture C: Merge of A+B

