



C/EBP α Rabbit mAb

Catalog No	YP-rAb-17585
Isotype	IgG
Reactivity	Human,Mouse,Rat
Applications	WB,IF,ELISA
Gene Name	CEBPA
Protein Name	CCAAT/enhancer-binding protein alpha
Purification Process	Protein A
Specificity	Endogenous
Formulation	PBS, 50% glycerol, 0.05% Proclin 300, 0.05%BSA
Source	Monoclonal, Rabbit,IgG
Dilution	WB 1:2000-1:10000; IF 1:200-1:1000; ELISA 1:5000-1:20000;
Concentration	0.5 mg/ml
Purity	$\geq 90\%$
Storage Stability	-15° C to -25° C/1 year(Do not lower than -25° C)
Synonyms	CEBPA ; CCAAT/enhancer-binding protein alpha ; C/EBP alpha
Observed Band	43kD
Calculated Molecular Weight	38kD
Cell Pathway	Nucleus
Tissue Specificity	Liver,Pancreas,Umbilical cord,White Matter pool- 5 brain tissues- f
Function	C/EBP is a DNA-binding protein that recognizes two different motifs: the CCAAT homology common to many promoters and the enhanced core homology common to many enhancers.,similarity:Belongs to the bZIP family.,similarity:Belongs to the bZIP family. C/EBP subfamily.,similarity:Contains 1 bZIP domain.,subunit:Binds DNA as a dimer and can form stable heterodimers with C/EBP beta and gamma. Interacts with UBN1. Interacts with HBV protein X.,
Background	This intronless gene encodes a transcription factor that contains a basic leucine zipper (bZIP) domain and recognizes the CCAAT motif in the promoters of target genes. The encoded protein functions in homodimers and also heterodimers with CCAAT/enhancer-binding proteins beta and gamma. Activity of this protein can modulate the expression of genes involved in cell cycle regulation as well as in body weight homeostasis. Mutation of this gene is associated with acute myeloid





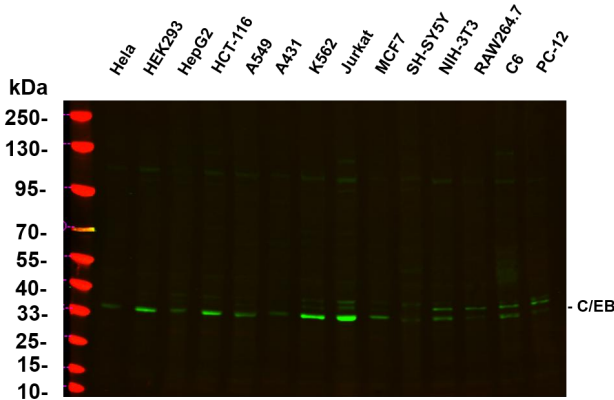
leukemia. The use of alternative in-frame non-AUG (GUG) and AUG start codons results in protein isoforms with different lengths. Differential translation initiation is mediated by an out-of-frame, upstream open reading frame which is located between the GUG and the first AUG start codons. [provided by RefSeq, Dec 2013],

matters needing attention

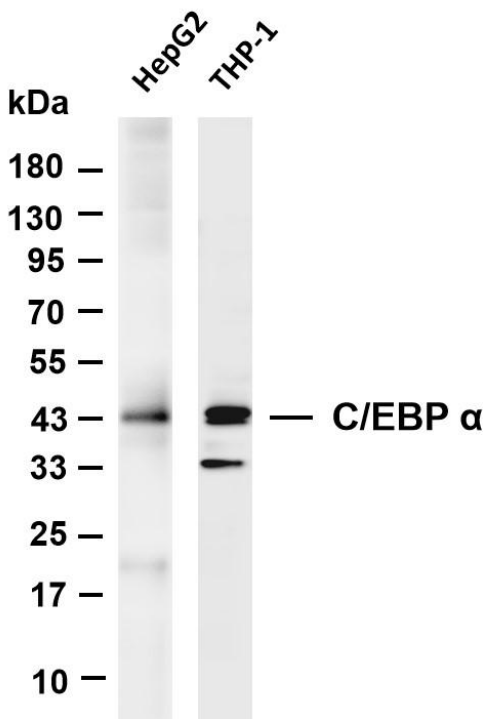
Avoid repeated freezing and thawing!

Usage suggestions

This product can be used in immunological reaction related experiments. For more information, please consult technical personnel.

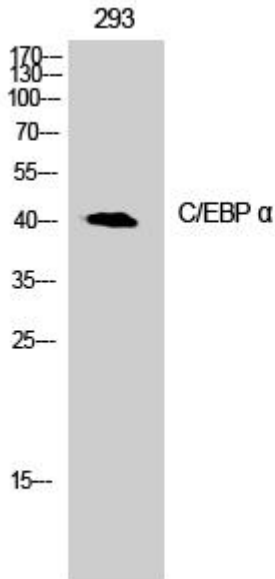


Various whole cell lysates were separated by 4-20% SDS-PAGE, and the primary antibody was used at 4~C, over night with a 1:5000 dilution . The Dylight 800-conjugated Goat anti-Rabbit antibody

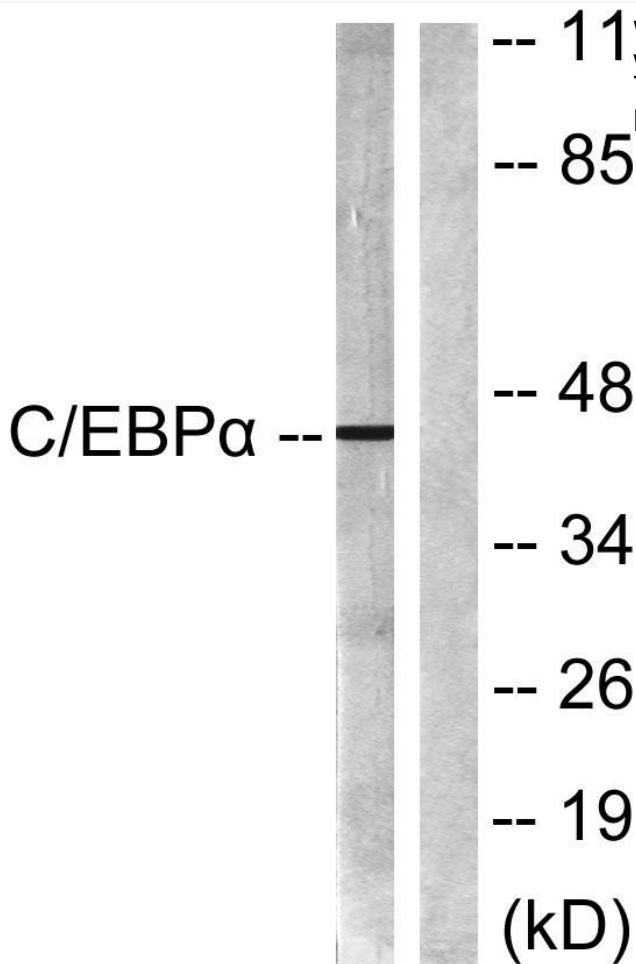


Various whole cell lysates were separated by 4-20% SDS-PAGE, and the membrane was blotted with anti-C/EBP α antibody. The HRP-conjugated Goat anti-Rabbit IgG(H + L) antibody was used to detect the antibody. Lane 1: HepG2 Lane 2: THP-1 Predicted band size: 38kDa Observed band size: 38kDa





Western Blot analysis of 293 cells using C/EBP α Antibody cells nucleus extracted by Minute TM Cytoplasmic and Nuclear Fractionation kit (SC-003, Inventbiotech, MN, USA).



Western blot analysis of lysates from 293 cells, treated with Insulin 0.01U/ml 15', using C/EBP-alpha Antibody. The lane on the right is blocked with the synthesized peptide.

