



# BACE Rabbit mAb

<b>Catalog No</b>	YP-rAb-17584
<b>Isotype</b>	IgG
<b>Reactivity</b>	Human,Mouse,Rat
<b>Applications</b>	WB,IHC,IF,IP,ELISA
<b>Gene Name</b>	BACE1
<b>Protein Name</b>	Beta-secretase 1
<b>Purification Process</b>	Protein A
<b>Specificity</b>	Endogenous
<b>Formulation</b>	PBS, 50% glycerol, 0.05% Proclin 300, 0.05%BSA
<b>Source</b>	Monoclonal, Rabbit,IgG
<b>Dilution</b>	IHC 1:100-1:400; WB 1:1000-1:5000; IF 1:200-1:1000; ELISA 1:5000-1:20000; IP 1:50-1:200; Note: For IHC, we suggest antigen retrieval with TE buffer pH 9.0
<b>Concentration</b>	0.5 mg/ml
<b>Purity</b>	≥90%
<b>Storage Stability</b>	-15° C to -25° C/1 year(Do not lower than -25° C)
<b>Synonyms</b>	BACE1 ; BACE ; KIAA1149 ; Beta-secretase 1 ; Aspartyl protease 2 ; ASP2 ; Asp 2 ; Beta-site amyloid precursor protein cleaving enzyme 1 ; Beta-site APP cleaving enzyme 1 ; Memapsin-2 ; Membrane-associated aspartic protease 2
<b>Observed Band</b>	70kD
<b>Calculated Molecular Weight</b>	56kD
<b>Cell Pathway</b>	Membrane, Cytoplasm
<b>Tissue Specificity</b>	Expressed at high levels in the brain and pancreas. In the brain, expression is highest in the substantia nigra, locus coruleus and medulla oblongata.
<b>Function</b>	Catalytic activity:Broad endopeptidase specificity. Cleaves Glu-Val-Asn-Leu- -Asp-Ala-Glu-Phe in the Swedish variant of Alzheimer's amyloid precursor protein.,enzyme regulation:Inhibited by RTN3 and RTN4.,Function:Responsible for the proteolytic processing of the amyloid precursor protein (APP). Cleaves at the N-terminus of the A-beta peptide sequence, between residues 671 and 672 of APP, leads to the generation and extracellular release of beta-cleaved soluble APP, and a corresponding cell-associated C-terminal fragment which is later released by gamma-secretase.,similarity:Belongs to the peptidase A1 family.,subunit:Monomer. Interacts with GGA1, GGA2 and GGA3. Interacts with RTN3 and RTN4.,tissue specificity:Brain.,

## 杭州臻优品生物科技有限公司

### 热销产品:

蛋白、一抗、抗体对、ELISA试剂盒、生化试剂盒  
CCK8试剂盒、QPCR检测试剂盒

### 检测服务:

ELISA检测及定制服务 | 生化检测 | PCR、QPCR检测 | WB检测  
| CO-IP检测 | 切片 | 染色 | 免疫组化 | 免疫荧光 | 透射电镜全套  
| 宏基因组、转录组、基因组、蛋白组、代谢组测序



关注官网



关注客服



## Background

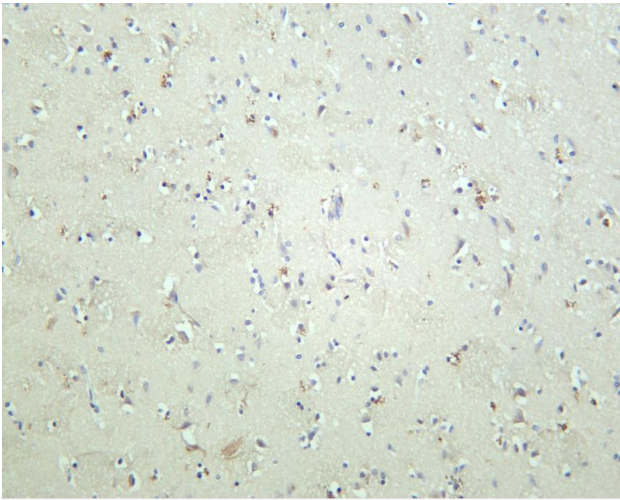
beta-secretase 1(BACE1) Homo sapiens This gene encodes a member of the peptidase A1 family of aspartic proteases. Alternative splicing results in multiple transcript variants, at least one of which encodes a preproprotein that is proteolytically processed to generate the mature protease. This transmembrane protease catalyzes the first step in the formation of amyloid beta peptide from amyloid precursor protein. Amyloid beta peptides are the main constituent of amyloid beta plaques, which accumulate in the brains of human Alzheimer's disease patients. [provided by RefSeq, Nov 2015],

## matters needing attention

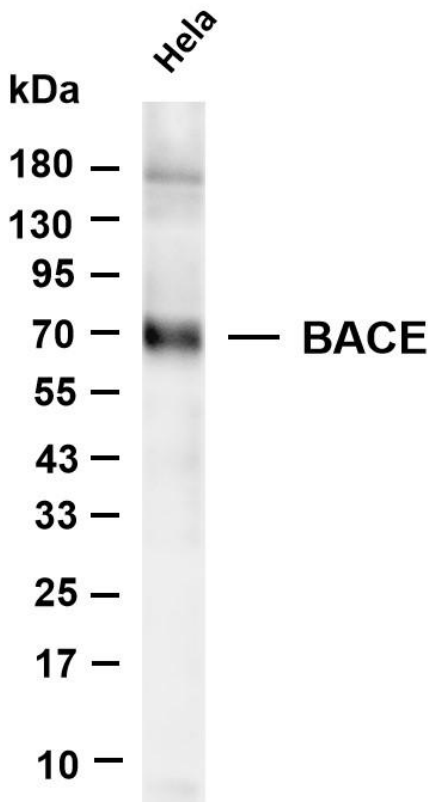
Avoid repeated freezing and thawing!

## Usage suggestions

This product can be used in immunological reaction related experiments. For more information, please consult technical personnel.



Human brain was stained with anti-BACE rabbit antibody



Various whole cell lysates were separated by 4-20% SDS-PAGE, and the membrane was blotted with anti-BACE antibody. The HRP-conjugated Goat anti-Rabbit IgG(H + L) antibody was used to detect the antibody. Lane 1: HeLa Predicted band size: 56kDa Observed band size: 70kDa

