



EGR1 Rabbit mAb

Catalog No	YP-rAb-17580
Isotype	IgG
Reactivity	Human,Mouse,Rat
Applications	WB,IHC,IF,IP,ELISA
Gene Name	EGR1
Protein Name	Early growth response protein 1
Purification Process	Protein A
Specificity	Endogenous
Formulation	PBS, 50% glycerol, 0.05% Proclin 300, 0.05%BSA
Source	Monoclonal, Rabbit,IgG
Dilution	IHC 1:1000-1:4000; WB 1:2000-1:10000; IF 1:200-1:1000; ELISA 1:5000-1:20000; IP 1:50-1:200; Note: For IHC, we suggest antigen retrieval with TE buffer pH 9.0
Concentration	0.5 mg/ml
Purity	≥90%
Storage Stability	-15° C to -25° C/1 year(Do not lower than -25° C)
Synonyms	EGR1 ; KROX24 ; ZNF225 ; Early growth response protein 1 ; EGR-1 ; AT225 ; Nerve growth factor-induced protein A ; NGFI-A ; Transcription factor ETR103 ; Transcription factor Zif268 ; Zinc finger protein 225 ; Zinc finger protein Krox-24
Observed Band	100kD
Calculated Molecular Weight	57kD
Cell Pathway	Cytoplasm, Nucleus
Tissue Specificity	Detected in neutrophils (at protein level).
Function	Transcriptional regulator. Recognizes and binds to the DNA sequence 5'-CGCCCCCGC-3'(EGR-site). Activates the transcription of target genes whose products are required for mitogenesis and differentiation.,induction:By growth factors.,similarity:Belongs to the EGR C2H2-type zinc-finger protein family.,similarity:Contains 3 C2H2-type zinc fingers.,
Background	The protein encoded by this gene belongs to the EGR family of C2H2-type zinc-finger proteins. It is a nuclear protein and functions as a transcriptional regulator. The products of target genes it activates are required for differentiation and mitogenesis. Studies suggest this is a cancer suppressor gene. [provided by





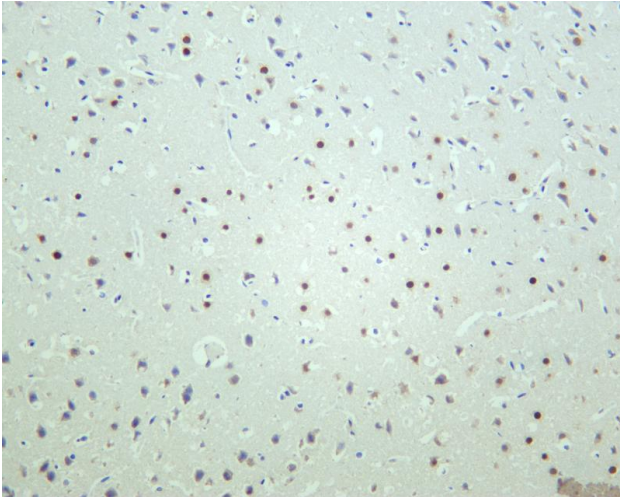
RefSeq, Dec 2014],

matters needing attention

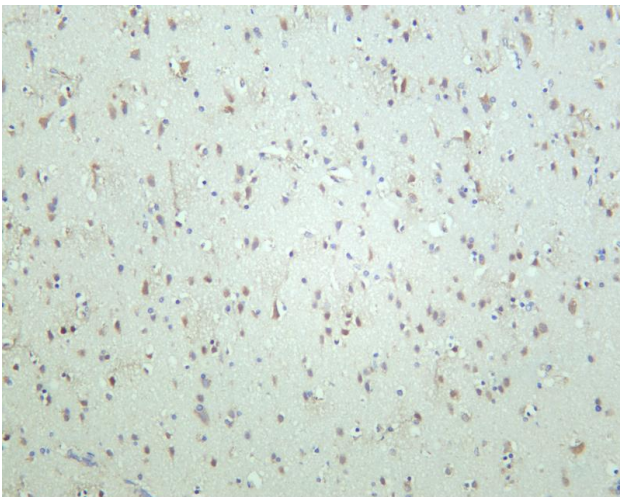
Avoid repeated freezing and thawing!

Usage suggestions

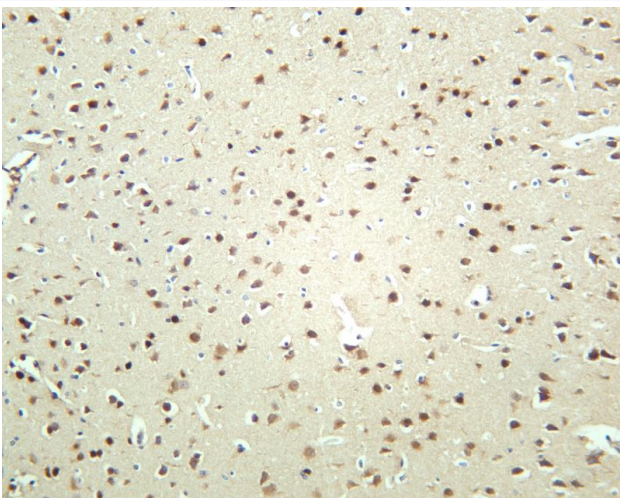
This product can be used in immunological reaction related experiments. For more information, please consult technical personnel.



Rat brain was stained with anti-EGR1 rabbit antibody



Human brain was stained with anti-EGR1 rabbit antibody



Mouse brain was stained with anti-EGR1 rabbit antibody

杭州臻优品生物科技有限公司

热销产品:

蛋白、一抗、抗体对、ELISA试剂盒、生化试剂盒
CCK8试剂盒、QPCR检测试剂盒

检测服务:

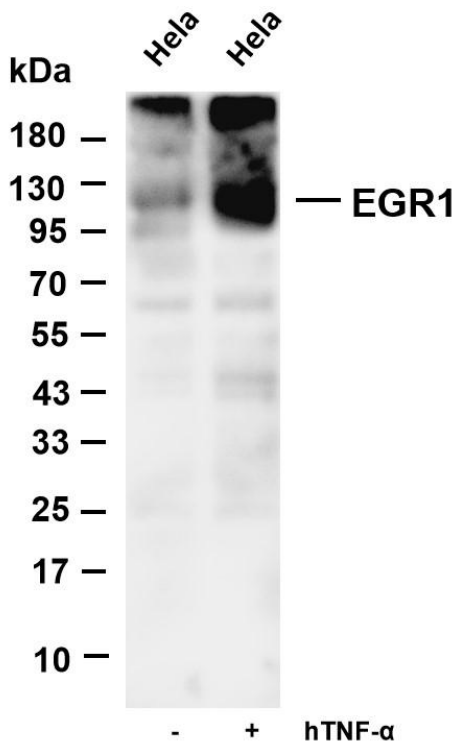
ELISA检测及定制服务 | 生化检测 | PCR、QPCR检测 | WB检测
ICO-IP检测 | 切片 | 染色 | 免疫组化 | 免疫荧光 | 透射电镜全套
| 宏基因组、转录组、基因组、蛋白组、代谢组测序



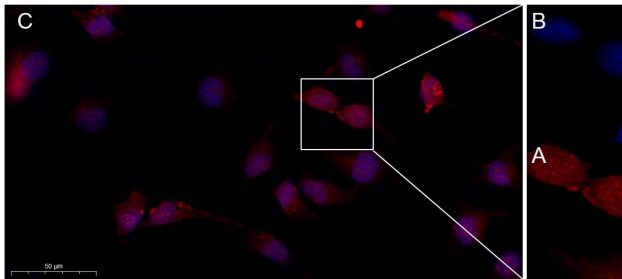
关注官网



关注客服



Various whole cell lysates were separated by 4-20% SDS-PAGE, and the membrane was blotted with anti-EGR1 antibody. The HRP-conjugated Goat anti-Rabbit IgG(H + L) antibody was used to detect the antibody. Lane 1: HeLa Lane 2: HeLa was treated with hTNF- α (20 ng/mL) for 5 minutes Predicted band size: 75kDa Observed band size: 100kDa



Immunofluorescence analysis of HeLa. Picture A: EGR1 Rabbit mAb (red). Picture B: DAPI (blue). Picture C: Merge of A+B

杭州臻优品生物科技有限公司

热销产品:

蛋白、一抗、抗体对、ELISA试剂盒、生化试剂盒
CCK8试剂盒、QPCR检测试剂盒

检测服务:

ELISA检测及定制服务 | 生化检测 | PCR、QPCR检测 | WB检测
ICO-IP检测 | 切片 | 染色 | 免疫组化 | 免疫荧光 | 透射电镜全套
| 宏基因组、转录组、基因组、蛋白组、代谢组测序



关注官网



关注客服