



ULK1(Phospho Ser757) Rabbit mAb

Catalog No	YP-rAb-17569
Isotype	IgG
Reactivity	Human,Mouse,Rat
Applications	WB,IF,IP,ELISA
Gene Name	ULK1
Protein Name	Serine/threonine-protein kinase ULK1
Purification Process	Protein A
Specificity	The antibody detects endogenous ULK1(Phospho AE13) protein.
Formulation	PBS, 50% glycerol, 0.05% Proclin 300, 0.05%BSA
Source	Monoclonal, Rabbit,IgG
Dilution	WB 1:2000-1:10000; IF 1:200-1:1000; ELISA 1:5000-1:20000; IP 1:50-1:200;
Concentration	0.5 mg/ml
Purity	≥90%
Storage Stability	-15° C to -25° C/1 year(Do not lower than -25° C)
Synonyms	ULK1 ; KIAA0722 ; Serine/threonine-protein kinase ULK1 ; Autophagy-related protein 1 homolog ; ATG1 ; hATG1 ; Unc-51-like kinase 1
Observed Band	150kD
Calculated Molecular Weight	113kD
Cell Pathway	Cytoplasm, cytosol . Preautophagosomal structure . Under starvation conditions, is localized to punctate structures primarily representing the isolation membrane that sequesters a portion of the cytoplasm resulting in the formation of an autophagosome. .
Tissue Specificity	Ubiquitously expressed. Detected in the following adult tissues: skeletal muscle, heart, pancreas, brain, placenta, liver, kidney, and lung.
Function	Catalytic activity:ATP + a protein = ADP + a phosphoprotein.,Function:Involved in axon growth. Plays an essential role in neurite extension of cerebellar granule cells.,similarity:Belongs to the protein kinase superfamily. Ser/Thr protein kinase family. APG1/unc-51/ULK1 subfamily.,similarity:Contains 1 protein kinase domain.,subunit:Interacts with GABARAP and GABARAPL2.,tissue specificity:Ubiquitously expressed. Detected in the following adult tissues: skeletal muscle, heart, pancreas, brain, placenta, liver, kidney, and lung.,
Background	catalytic activity:ATP + a protein = ADP + a phosphoprotein.,function:Involved in axon growth. Plays an essential role in neurite extension of cerebellar granule

杭州臻优品生物科技有限公司

热销产品:

蛋白、一抗、抗体对、ELISA试剂盒、生化试剂盒
CCK8试剂盒、QPCR检测试剂盒

检测服务:

ELISA检测及定制服务 | 生化检测 | PCR、QPCR检测 | WB检测
ICO-IP检测 | 切片 | 染色 | 免疫组化 | 免疫荧光 | 透射电镜全套
| 宏基因组、转录组、基因组、蛋白组、代谢组测序



关注官网



关注客服



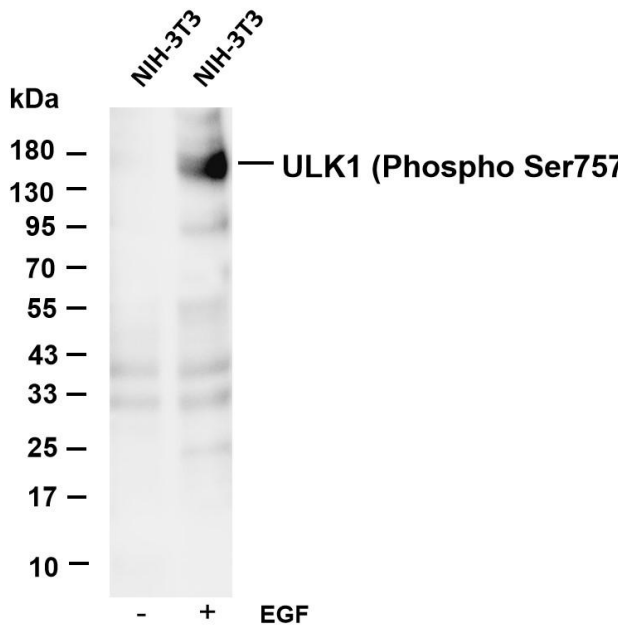
cells.,similarity:Belongs to the protein kinase superfamily. Ser/Thr protein kinase family. APG1/unc-51/ULK1 subfamily.,similarity:Contains 1 protein kinase domain.,subunit:Interacts with GABARAP and GABARAPL2.,tissue specificity:Ubiquitously expressed. Detected in the following adult tissues: skeletal muscle, heart, pancreas, brain, placenta, liver, kidney, and lung.,

matters needing attention

Avoid repeated freezing and thawing!

Usage suggestions

This product can be used in immunological reaction related experiments. For more information, please consult technical personnel.



Various whole cell lysates were separated by 4-20% SDS-PAGE, and the membrane was blotted with anti-ULK1 (Phospho Ser757) antibody. The HRP-conjugated Goat anti-Rabbit IgG(H + L) antibody was used to detect the antibody. Lane 1: NIH-3T3 Lane 2: NIH-3T3 was treated with EGF(100ng/mL) for 20 minutes Predicted band size: 113kDa Observed band size: 150kDa

