



GSK3 α / β (Phospho Tyr216/Tyr279) Rabbit mAb

Catalog No	YP-rAb-17568
Isotype	IgG
Reactivity	Human,Mouse,Rat
Applications	WB,IHC,IF,IP,ELISA
Gene Name	GSK3A/GSK3B
Protein Name	Glycogen synthase kinase-3 alpha/beta
Purification Process	Protein A
Specificity	Endogenous
Formulation	PBS, 50% glycerol, 0.05% Proclin 300, 0.05%BSA
Source	Monoclonal, Rabbit,IgG
Dilution	IHC 1:200-1:1000; WB 1:2000-1:10000; IF 1:200-1:1000; ELISA 1:5000-1:20000; IP 1:50-1:200; Note: For IHC, we suggest antigen retrieval with TE buffer pH 9.0
Concentration	0.5 mg/ml
Purity	$\geq 90\%$
Storage Stability	-15° C to -25° C/1 year(Do not lower than -25° C)
Synonyms	GSK3A ; Glycogen synthase kinase-3 alpha ; GSK-3 alpha ; Serine/threonine-protein kinase GSK3A ; GSK3B ; Glycogen synthase kinase-3 beta ; GSK-3 beta ; Serine/threonine-protein kinase GSK3B
Observed Band	47kD,51kD
Calculated Molecular Weight	47kD,51kD
Cell Pathway	Cytoplasm
Tissue Specificity	Brain,Eye,Foreskin,Lung,Pancreas,Platelet,Testis,
Function	Catalytic activity:ATP + [tau protein] = ADP + [tau protein] phosphate.,Function:Implicated in the hormonal control of several regulatory proteins including glycogen synthase, MYB and the transcription factor JUN.,similarity:Belongs to the protein kinase superfamily.,similarity:Belongs to the protein kinase superfamily. CMGC Ser/Thr protein kinase family. GSK-3 subfamily.,similarity:Contains 1 protein kinase domain.,subunit:Monomer.,
Background	glycogen synthase kinase 3 alpha(GSK3A) Homo sapiens This gene encodes a multifunctional Ser/Thr protein kinase that is implicated inThe control of several regulatory proteins including glycogen synthase, and transcription factors, such as JUN. It also plays a role inThe WNT and PI3K signaling pathways, as well as





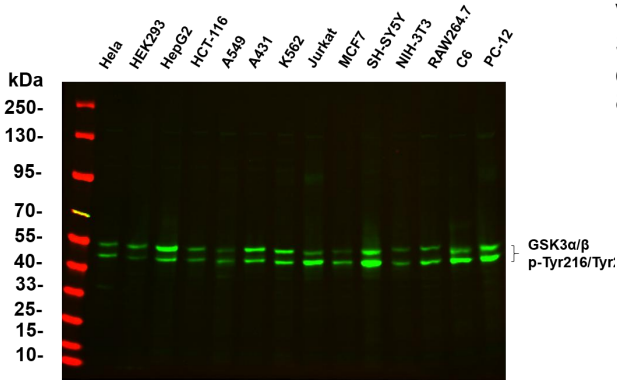
regulates The production of beta-amyloid peptides associated with Alzheimer's disease. [provided by RefSeq, Oct 2011],

matters needing attention

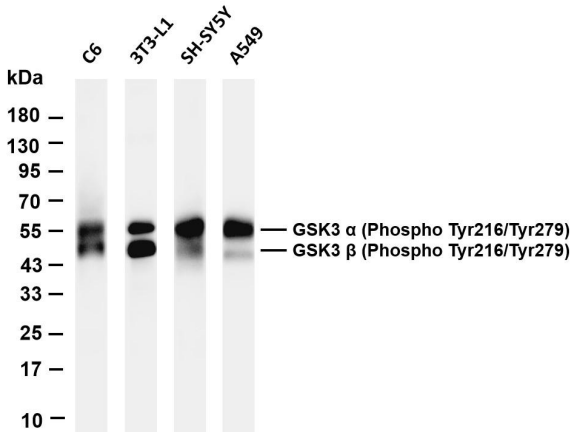
Avoid repeated freezing and thawing!

Usage suggestions

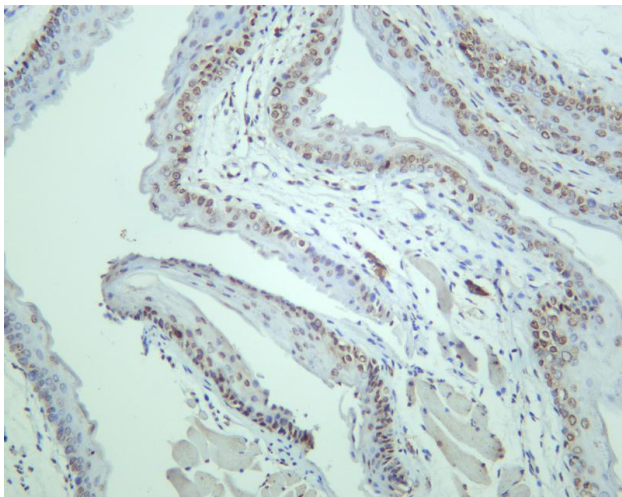
This product can be used in immunological reaction related experiments. For more information, please consult technical personnel.



Various whole cell lysates were separated by 4-20% SDS-PAGE, and the primary antibody was used at 4~C, over night with a 1:5000 dilution. The Dylight 800-conjugated Goat anti-Rabbit antibody

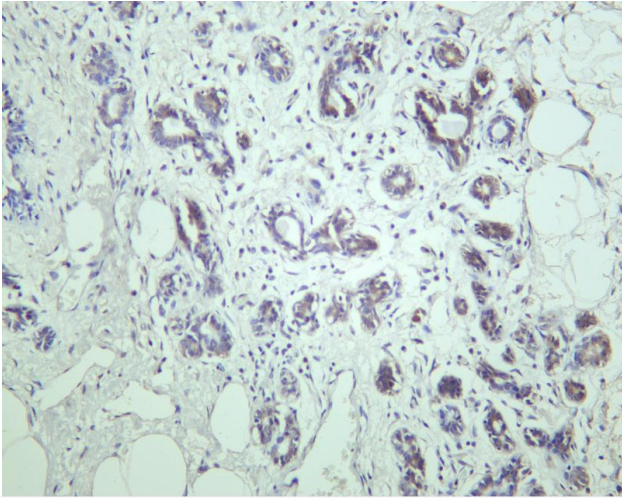


Various whole cell lysates were separated by 4-20% SDS-PAGE, and the membrane was blotted with anti-GSK3 α / β (Phospho Tyr216/Tyr279) antibody. The HRP-conjugated Goat anti-Rabbit IgG(H + L) antibody was used to detect the antibody. Lane 1: C6 Lane 2: 3T3-L1 Lane 3: SH-SY5Y Lane 4: A549 Predicted band size: 47, 51kDa Observed band size: 47, 51kDa

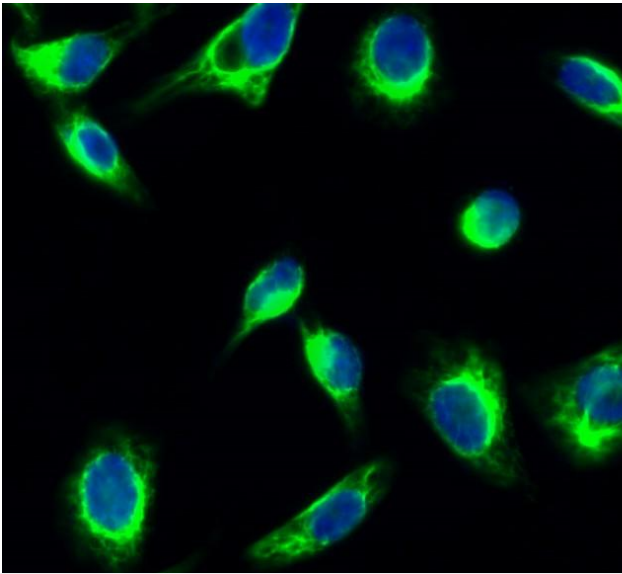


Mouse thyroid was stained with anti-GSK3 α / β (Phospho Tyr216/Tyr279) rabbit antibody





Human thyroid was stained with anti-GSK3 α / β (Phospho Tyr216/Tyr279) rabbit antibody



Immunofluorescence analysis of HeLa cell. 1, GSK3 α / β (phospho Tyr279/216) Monoclonal Antibody (green) was diluted at 1:200 (4° overnight). 2, Goat Anti Rabbit Alexa Fluor 488 Catalog: RS3211 was diluted at 1:1000 (room temperature, 50min). 3 DAPI (blue) 10min.

杭州臻优品生物科技有限公司

热销产品:

蛋白、一抗、抗体对、ELISA试剂盒、生化试剂盒
CCK8试剂盒、QPCR检测试剂盒

检测服务:

ELISA检测及定制服务 | 生化检测 | PCR、QPCR检测 | WB检测
ICO-IP检测 | 切片 | 染色 | 免疫组化 | 免疫荧光 | 透射电镜全套
| 宏基因组、转录组、基因组、蛋白组、代谢组测序



关注官网



关注客服