



CENP-A Rabbit mAb

Catalog No	YP-rAb-17566
Isotype	IgG
Reactivity	Human
Applications	WB,IF,ELISA
Gene Name	CENPA
Protein Name	Histone H3-like centromeric protein A
Purification Process	Protein A
Specificity	Endogenous
Formulation	PBS, 50% glycerol, 0.05% Proclin 300, 0.05%BSA
Source	Monoclonal, Rabbit,IgG
Dilution	WB 1:2000-1:10000; IF 1:200-1:1000; ELISA 1:5000-1:20000;
Concentration	0.5 mg/ml
Purity	≥90%
Storage Stability	-15° C to -25° C/1 year(Do not lower than -25° C)
Synonyms	CENPA ; Histone H3-like centromeric protein A ; Centromere autoantigen A ; Centromere protein A ; CENP-A
Observed Band	16kD
Calculated Molecular Weight	16kD
Cell Pathway	Nucleus . Chromosome, centromere, kinetochore . Chromosome, centromere . Localizes exclusively in the kinetochore domain of centromeres. Occupies a compact domain at the inner kinetochore plate stretching across 2 thirds of the length of the constriction but encompassing only one third of the constriction width and height (PubMed:19114591). Phosphorylation at Ser-68 during early mitosis abolishes association with chromatin and centromeres and results in dispersed nuclear location (PubMed:25556658). .
Tissue Specificity	Epithelium,Uterus,
Function	Disease:Antibodies against CENPA are present in sera from patients with autoimmune diseases that developed autoantibodies against centrosomal proteins.,Domain:The CATD (CENPA targeting domain) region is responsible for the more compact structure of nucleosomes containing CENPA and is necessary and sufficient to mediate the localization into centromeres.,Function:Histone H3-like variant which exclusively replaces conventional H3 in the nucleosome core of centromeric chromatin at the inner plate of the kinetochore. Required for





recruitment and assembly of kinetochore proteins, mitotic progression and chromosome segregation. May serve as an epigenetic mark that propagates centromere identity through replication and cell division.,PTM:Phosphorylation of Ser-7 by Aurora-A/STK6 and Aurora-B/STK12 during prophase is required for localization of Aurora-A/STK6 and Aurora-B/STK12 at inner centromere and is essential for kinetochore function. Initial phosphorylation during prophase is mediated by Aurora-A/STK6 and is maintained by Aurora-B/STK12.,PTM:Ubiquitinated (Probable). Interaction with herpes virus HSV-1 ICP0 protein, leads to its degradation by the proteasome pathway.,similarity:Belongs to the histone H3 family.,subcellular location:Localizes exclusively in the kinetochore domain of centromeres.,subunit:Forms a nucleosome-like histone octamer containing two molecules each of H2A, H2B, CENPA and H4 assembled in one CENPA-H4 heterotetramer and two H2A-H2B heterodimers. Nucleosomes containing CENPA also contain histone H2A variants such as macroH2A H2AFY and H2A.Z/H2AFZ. The CENPA-H4 heterotetramer is more compact and structurally more rigid than corresponding H3-H4 heterotetramers. Component of the CENPA-NAC complex, at least composed of CENPA, CENPC, CENPH, CENPM, CENPN, CENPT and MLF1IP/CENPU. Interacts (via CATD domain) with HJURP; the interaction is direct and is required for its localization to centromeres. Interacts directly with herpes virus HSV-1 ICP0 protein.,

Background

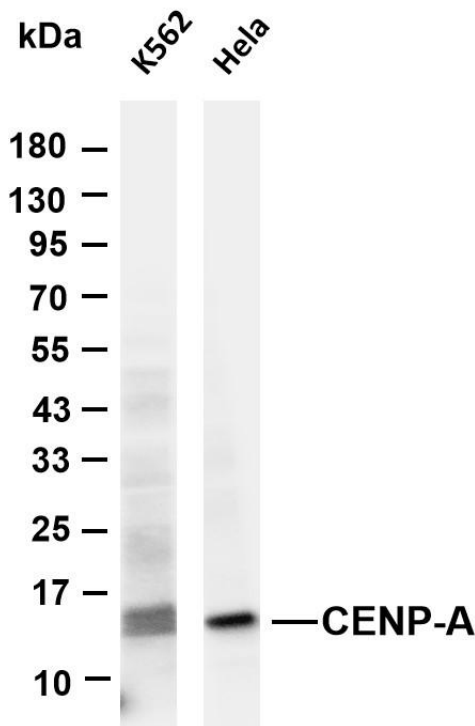
Centromeres are the differentiated chromosomal domains that specify the mitotic behavior of chromosomes. This gene encodes a centromere protein which contains a histone H3 related histone fold domain that is required for targeting to the centromere. Centromere protein A is proposed to be a component of a modified nucleosome or nucleosome-like structure in which it replaces 1 or both copies of conventional histone H3 in the (H3-H4)₂ tetrameric core of the nucleosome particle. The protein is a replication-independent histone that is a member of the histone H3 family. Alternative splicing results in multiple transcript variants encoding distinct isoforms. [provided by RefSeq, Nov 2015],

matters needing attention

Avoid repeated freezing and thawing!

Usage suggestions

This product can be used in immunological reaction related experiments. For more information, please consult technical personnel.



Various whole cell lysates were separated by 4-20% SDS-PAGE, and the membrane was blotted with anti-CENP-A antibody. The HRP-conjugated Goat anti-Rabbit IgG(H + L) antibody was used to detect the antibody. Lane 1: K562 Lane 2: HeLa Predicted band size: 16kDa Observed band size: 16kDa

杭州臻优品生物科技有限公司

热销产品:

蛋白、一抗、抗体对、ELISA试剂盒、生化试剂盒
CCK8试剂盒、QPCR检测试剂盒

检测服务:

ELISA检测及定制服务 | 生化检测 | PCR、QPCR检测 | WB检测
ICO-IP检测 | 切片 | 染色 | 免疫组化 | 免疫荧光 | 透射电镜全套
| 宏基因组、转录组、基因组、蛋白组、代谢组测序



关注官网



关注客服