



RSK2 Rabbit mAb

| | |
|------------------------------------|--|
| Catalog No | YP-rAb-17563 |
| Isotype | IgG |
| Reactivity | Human,Mouse,Rat |
| Applications | WB,IHC,IF,IP,ELISA |
| Gene Name | RPS6KA3 ISPK1 MAPKAPK1B RSK2 |
| Protein Name | RSK2 |
| Purification Process | Protein A |
| Specificity | Endogenous |
| Formulation | PBS, 50% glycerol, 0.05% Proclin 300, 0.05%BSA |
| Source | Monoclonal, Rabbit,IgG |
| Dilution | IHC 1:200-1:1000; WB 1:2000-1:10000; IF 1:200-1:1000; ELISA 1:5000-1:20000; IP 1:50-1:200; Note: For IHC, we suggest antigen retrieval with TE buffer pH 9.0 |
| Concentration | 0.5 mg/ml |
| Purity | ≥90% |
| Storage Stability | -15° C to -25° C/1 year(Do not lower than -25° C) |
| Synonyms | Ribosomal protein S6 kinase alpha-3 ; S6K-alpha-3 ; 90 kDa ribosomal protein S6 kinase 3 ; p90-RSK 3 ; p90RSK3 ; Insulin-stimulated protein kinase 1 ; ISPK-1 ; MAP kinase-activated protein kinase 1b ; MAPK-activated protein kinase 1b ; MAPKAP kinase 1b ; MAPKAPK-1b ; Ribosomal S6 kinase 2 ; RSK-2 ; pp90RSK2 ; |
| Observed Band | 84kD |
| Calculated Molecular Weight | 84kD |
| Cell Pathway | Nucleus . Cytoplasm . |
| Tissue Specificity | Expressed in many tissues, highest levels in skeletal muscle. |
| Function | Catalytic activity:ATP + a protein = ADP + a phosphoprotein.,cofactor:Magnesium.,Disease:Defects in RPS6KA3 are the cause of Coffin-Lowry syndrome (CLS) [MIM:303600]; an X-linked dominant disorder characterized by severe mental retardation with facial and digital dysmorphisms, and progressive skeletal deformations.,enzyme regulation:Activated by multiple phosphorylations on threonine and serine residues.,Function:Serine/threonine kinase that may play a role in mediating the growth-factor and stress induced activation of the transcription factor |

杭州臻优品生物科技有限公司

热销产品:

蛋白、一抗、抗体对、ELISA试剂盒、生化试剂盒
CCK8试剂盒、QPCR检测试剂盒

检测服务:

ELISA检测及定制服务 | 生化检测 | PCR、QPCR检测 | WB检测
ICO-IP检测 | 切片 | 染色 | 免疫组化 | 免疫荧光 | 透射电镜全套
| 宏基因组、转录组、基因组、蛋白组、代谢组测序



关注官网



关注客服



CREB.,PTM:Autophosphorylated on Ser-386, as part of the activation process.,PTM:Ser-227 phosphorylation promotes Ser-386 phosphorylation and leads to basal activation. Full activation by growth factors requires additional phosphorylation on Ser-369.,similarity:Belongs to the protein kinase superfamily. AGC Ser/Thr protein kinase family. S6 kinase subfamily.,similarity:Contains 1 AGC-kinase C-terminal domain.,similarity:Contains 2 protein kinase domains.,subunit:Forms a complex with either ERK1 or ERK2 in quiescent cells. Transiently dissociates following mitogenic stimulation (By similarity). Interacts with NFATC4.,tissue specificity:Expressed in many tissues, highest levels in skeletal muscle.,

Background

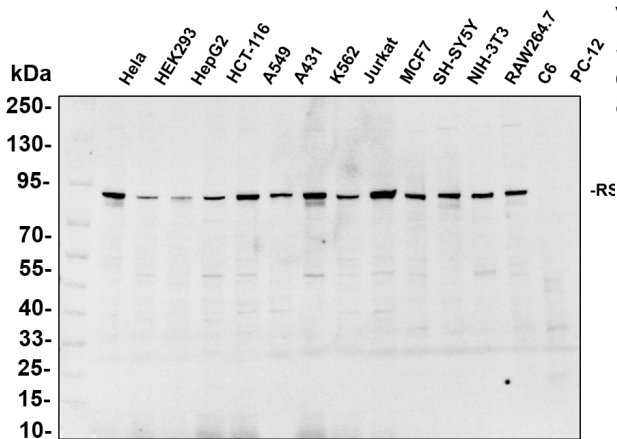
ribosomal protein S6 kinase A3(RPS6KA3) Homo sapiens This gene encodes a member of the RSK (ribosomal S6 kinase) family of serine/threonine kinases. This kinase contains 2 non-identical kinase catalytic domains and phosphorylates various substrates, including members of the mitogen-activated kinase (MAPK) signalling pathway. The activity of this protein has been implicated in controlling cell growth and differentiation. Mutations in this gene have been associated with Coffin-Lowry syndrome (CLS). [provided by RefSeq, Jul 2008],

matters needing attention

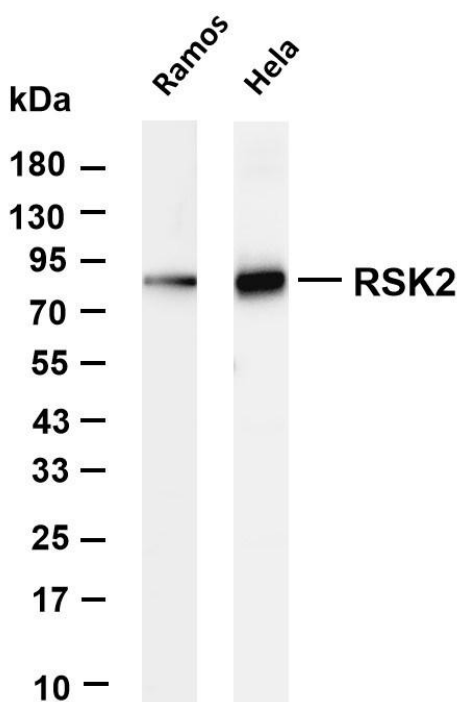
Avoid repeated freezing and thawing!

Usage suggestions

This product can be used in immunological reaction related experiments. For more information, please consult technical personnel.



Various whole cell lysates were separated by 4-20% SDS-PAGE, and the primary antibody was used at 4 °C, over night with a 1:2500 dilution . The Dylight 800-conjugated Goat anti-Rabbit antibody



Various whole cell lysates were separated by 4-20% SDS-PAGE, and the membrane was blotted with anti-

热销产品:

蛋白、一抗、抗体对、ELISA试剂盒、生化试剂盒
CCK8试剂盒、QPCR检测试剂盒

检测服务:

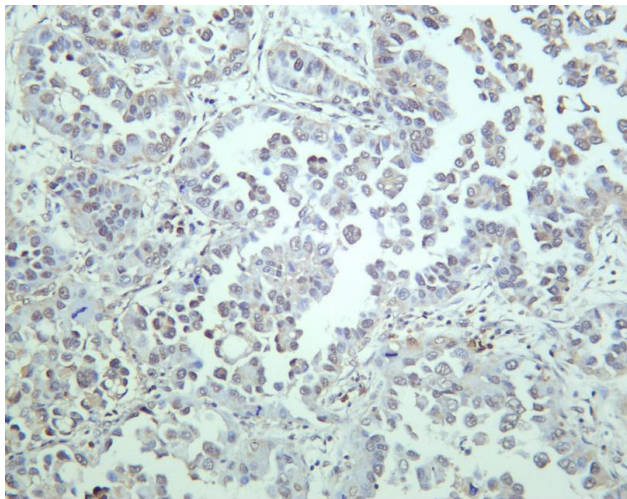
ELISA检测及定制服务 | 生化检测 | PCR、QPCR检测 | WB检测
ICO-IP检测 | 切片 | 染色 | 免疫组化 | 免疫荧光 | 透射电镜全套
| 宏基因组、转录组、基因组、蛋白组、代谢组测序



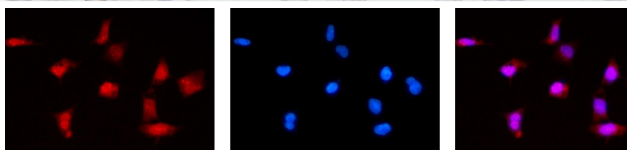
关注官网



关注客服



Human lung carcinoma was stained with anti-



Immunofluorescence analysis of HEK293. Picture A: RSK2 antibody (red). Picture B: DAPI (blue). Picture C: Merge of A+B

A

B

C

