



CCR6 Rabbit mAb

| | |
|------------------------------------|--|
| Catalog No | YP-rAb-17556 |
| Isotype | IgG |
| Reactivity | Human |
| Applications | WB,IHC,IF,IP,ELISA |
| Gene Name | CCR6 |
| Protein Name | C-C chemokine receptor type 6 |
| Purification Process | Protein A |
| Specificity | Endogenous |
| Formulation | PBS, 50% glycerol, 0.05% Proclin 300, 0.05%BSA |
| Source | Monoclonal, Rabbit,IgG |
| Dilution | IHC 1:200-1:1000; WB 1:2000-1:10000; IF 1:200-1:1000; ELISA 1:5000-1:20000; IP 1:50-1:200; Note: For IHC, we suggest antigen retrieval with TE buffer pH 9.0 |
| Concentration | 0.5 mg/ml |
| Purity | ≥90% |
| Storage Stability | -15° C to -25° C/1 year(Do not lower than -25° C) |
| Synonyms | CCR6 ; CKRL3 ; CMKBR6 ; GPR29 ; STRL22 ; C-C chemokine receptor type 6 ; C-C CKR-6 ; CC-CKR-6 ; CCR-6 ; Chemokine receptor-like 3 ; CKR-L3 ; DRY6 ; G-protein coupled receptor 29 ; GPR-CY4 ; GPRCY4 ; LARC receptor ; CD196 |
| Observed Band | 44kD |
| Calculated Molecular Weight | 42kD |
| Cell Pathway | Cell membrane ; Multi-pass membrane protein . Cell surface . |
| Tissue Specificity | Sperm. Mainly localized in the tail and in the postacrosomal region but is also found in the midpiece and basal region in a small percentage of sperm cells. Reduced levels found in the sperms of asthenozoospermia and leukocytospermia patients (at protein level). Spleen, lymph nodes, appendix, and fetal liver. Expressed in lymphocytes, T-cells and B-cells but not in natural killer cells, monocytes or granulocytes. |
| Function | Caution:It is uncertain whether Met-1 or Met-6 is the initiator.,Domain:Contains a RS region (arginine-serine dipeptide repeat) within the C-terminal domain which is the hallmark of the SR family of splicing factors. This region probably plays a role in protein-protein interactions.,Function:Receptor for a C-C type chemokine. Binds to MIP-3-alpha/LARC and subsequently transduces a signal by increasing the intracellular calcium ions level.,Function:Transcriptional regulator which participates in regulating the pre-mRNA splicing process. Also modulates the |

杭州臻优品生物科技有限公司

热销产品:

蛋白、一抗、抗体对、ELISA试剂盒、生化试剂盒
CCK8试剂盒、QPCR检测试剂盒

检测服务:

ELISA检测及定制服务 | 生化检测 | PCR、QPCR检测 | WB检测
ICO-IP检测 | 切片 | 染色 | 免疫组化 | 免疫荧光 | 透射电镜全套
| 宏基因组、转录组、基因组、蛋白组、代谢组测序



关注官网



关注客服



expression of critical apoptotic factor, leading to cell apoptosis.,induction:By interleukin-2.,online information:CC chemokine receptors entry,similarity:Belongs to the cyclin family. Cyclin L subfamily.,similarity:Belongs to the G-protein coupled receptor 1 family.,subunit:Interacts with CDC2L1 or CDC2L2, SFRS2, SFRS7 and POLR2A, the hyperphosphorylated C-terminal domain (CTD) of RNA polymerase II.,tissue specificity:Spleen, lymph nodes, appendix, and fetal liver. Expressed in lymphocytes, T-cells and B-cells but not in natural killer cells, monocytes or granulocytes.,tissue specificity:Ubiquitously expressed, with a higher expression level observed in ovary, heart, liver and pancreas.,

Background

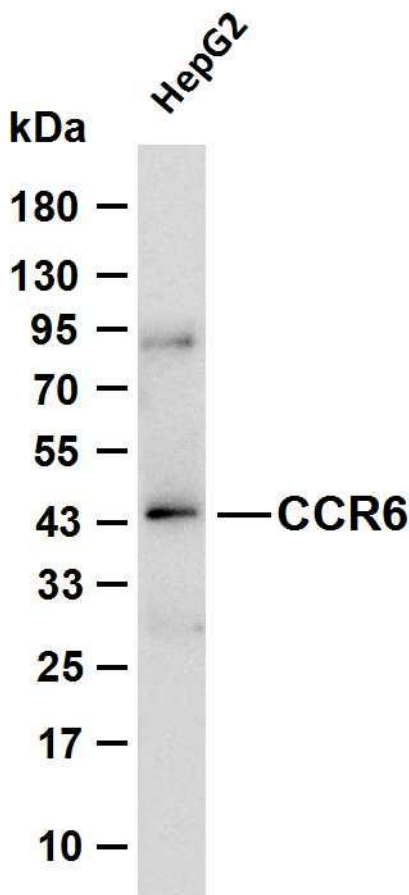
This gene encodes a member of the beta chemokine receptor family, which is predicted to be a seven transmembrane protein similar to G protein-coupled receptors. The gene is preferentially expressed by immature dendritic cells and memory T cells. The ligand of this receptor is macrophage inflammatory protein 3 alpha (MIP-3 alpha). This receptor has been shown to be important for B-lineage maturation and antigen-driven B-cell differentiation, and it may regulate the migration and recruitment of dendritic and T cells during inflammatory and immunological responses. Alternatively spliced transcript variants that encode the same protein have been described for this gene. [provided by RefSeq, Jul 2008],

matters needing attention

Avoid repeated freezing and thawing!

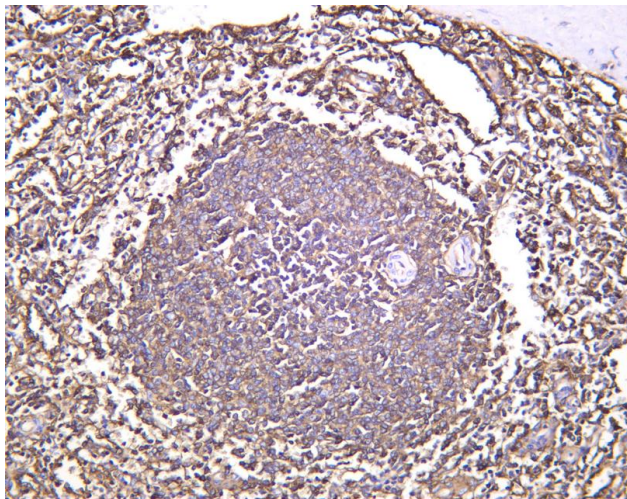
Usage suggestions

This product can be used in immunological reaction related experiments. For more information, please consult technical personnel.



Various whole cell lysates were separated by 4-20% SDS-PAGE, and the membrane was blotted with anti-CCR6 antibody. The HRP-conjugated Goat anti-Rabbit IgG (H + L) antibody was used to detect the antibody. Lane 1: HepG2 Predicted band size: 42kDa Observed band size: 44kDa





Human spleen was stained with anti-CCR6 Rabbit antibody

杭州臻优品生物科技有限公司

热销产品:

蛋白、一抗、抗体对、ELISA试剂盒、生化试剂盒
CCK8试剂盒、QPCR检测试剂盒

检测服务:

ELISA检测及定制服务 | 生化检测 | PCR、QPCR检测 | WB检测
ICO-IP检测 | 切片 | 染色 | 免疫组化 | 免疫荧光 | 透射电镜全套
| 宏基因组、转录组、基因组、蛋白组、代谢组测序



关注官网



关注客服