



# KIF2C Rabbit mAb

<b>Catalog No</b>	YP-rAb-17552
<b>Isotype</b>	IgG
<b>Reactivity</b>	Human
<b>Applications</b>	WB,IHC,IF,ELISA
<b>Gene Name</b>	KIF2C
<b>Protein Name</b>	Kinesin-like protein KIF2C
<b>Purification Process</b>	Protein A
<b>Specificity</b>	Endogenous
<b>Formulation</b>	PBS, 50% glycerol, 0.05% Proclin 300, 0.05%BSA
<b>Source</b>	Monoclonal, Rabbit,IgG
<b>Dilution</b>	IHC 1:200-1:500; WB 1:2000-1:10000; IF 1:200-1:1000; ELISA 1:5000-1:20000; Note: For IHC, we suggest antigen retrieval with TE buffer pH 9.0
<b>Concentration</b>	0.5 mg/ml
<b>Purity</b>	≥90%
<b>Storage Stability</b>	-15° C to -25° C/1 year(Do not lower than -25° C)
<b>Synonyms</b>	KIF2C ; KNSL6 ; Kinesin-like protein KIF2C ; Kinesin-like protein 6 ; Mitotic centromere-associated kinesin ; MCAK
<b>Observed Band</b>	90kD
<b>Calculated Molecular Weight</b>	81kD
<b>Cell Pathway</b>	Cytoplasm, cytoskeleton . Nucleus . Chromosome, centromere . Chromosome, centromere, kinetochore . Associates with the microtubule network at the growing distal tip (the plus-end) of microtubules, probably through interaction with MTUS2/TIP150 and MAPRE1 (By similarity). Association with microtubule plus ends is also mediated by interaction with KIF18B. Centromeric localization requires the presence of BUB1 and SGO2. .
<b>Tissue Specificity</b>	Expressed at high levels in thymus and testis, at low levels in small intestine, the mucosal lining of colon, and placenta, and at very low levels in spleen and ovary; expression is not detected in prostate, peripheral blood Leukocytes, heart, brain, lung, liver, skeletal muscle, kidney or pancreas. Isoform 2 is testis-specific.
<b>Function</b>	Present throughout the cell cycle, associates with centromeres at early prophase, and remains associated with the centromere until after telophase.,PTM:Phosphorylated upon DNA damage, probably by ATM or ATR.,similarity:Belongs to the kinesin-like protein family.,similarity:Belongs to the kinesin-like protein family. MCAK/KIF2 subfamily.,similarity:Contains 1 kinesin-motor domain.,subunit:Interacts with CENPH.,tissue specificity:Expressed

## 杭州臻优品生物科技有限公司

### 热销产品:

蛋白、一抗、抗体对、ELISA试剂盒、生化试剂盒  
CCK8试剂盒、QPCR检测试剂盒

### 检测服务:

ELISA检测及定制服务 | 生化检测 | PCR、QPCR检测 | WB检测  
ICO-IP检测 | 切片 | 染色 | 免疫组化 | 免疫荧光 | 透射电镜全套  
| 宏基因组、转录组、基因组、蛋白组、代谢组测序



关注官网



关注客服



at high levels in thymus and testis, at low levels in small intestine, the mucosal lining of colon, and placenta, and at very low levels in spleen and ovary; expression is not detected in prostate, peripheral blood Leukocytes, heart, brain, lung, liver, skeletal muscle, kidney or pancreas.,

**Background**

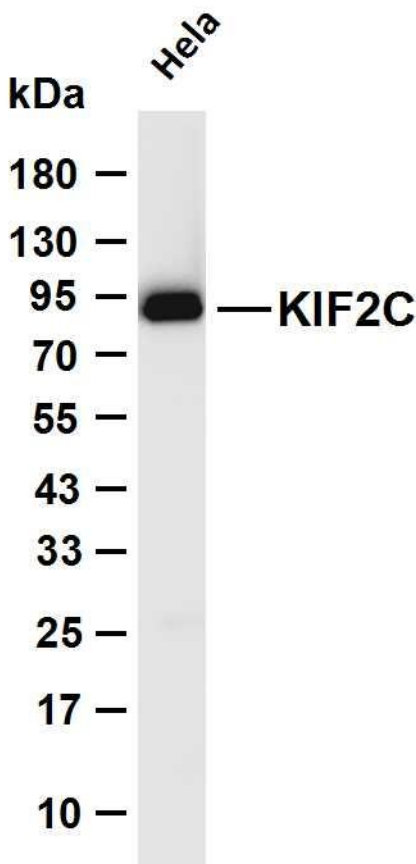
kinesin family member 2C(KIF2C) Homo sapiens This gene encodes a kinesin-like protein that functions as a microtubule-dependent molecular motor. The encoded protein can depolymerize microtubules at the plus end, thereby promoting mitotic chromosome segregation. Alternative splicing results in multiple transcript variants. [provided by RefSeq, Jul 2014],

**matters needing attention**

Avoid repeated freezing and thawing!

**Usage suggestions**

This product can be used in immunological reaction related experiments. For more information, please consult technical personnel.



Various whole cell lysates were separated by 4-20% SDS-PAGE, and the membrane was blotted with anti-KIF2C antibody. The HRP-conjugated Goat anti-Rabbit IgG (H + L) antibody was used to detect the antibody. Lane 1: HeLa Predicted band size: 81kDa Observed band size: 90kDa

