



Claudin-2 Rabbit mAb

Catalog No	YP-rAb-17545
Isotype	IgG
Reactivity	Human,Mouse
Applications	WB,IHC,IF,ELISA
Gene Name	CLDN2
Protein Name	Claudin-2
Purification Process	Protein A
Specificity	Endogenous
Formulation	PBS, 50% glycerol, 0.05% Proclin 300, 0.05%BSA
Source	Monoclonal, Rabbit,IgG
Dilution	IHC 1:200-1:500; WB 1:10000-1:50000; IF 1:200-1:1000; ELISA 1:5000-1:20000; Note: For IHC, we suggest antigen retrieval with TE buffer pH 9.0
Concentration	0.5 mg/ml
Purity	≥90%
Storage Stability	-15° C to -25° C/1 year(Do not lower than -25° C)
Synonyms	CLDN2 ; PSEC0059 ; SP82 ; Claudin-2 ; SP82
Observed Band	20kD
Calculated Molecular Weight	25kD
Cell Pathway	Cell junction, tight junction . Cell membrane ; Multi-pass membrane protein .
Tissue Specificity	Colon,Colon epithelium,Kidney,Skin,Teratocarcinoma,Thalamus,
Function	Plays a major role in tight junction-specific obliteration of the intercellular space, through calcium-independent cell-adhesion activity.,similarity:Belongs to the claudin family.,subunit:Can form homo- and heteropolymers with other CLDN. Homopolymers interact with CLDN3, but not CLDN1, homopolymers. Directly interacts with TJP1/ZO-1, TJP2/ZO-2 and TJP3/ZO-3.,
Background	This gene product belongs to the claudin protein family whose members have been identified as major integral membrane proteins localized exclusively at tight junctions. Claudins are expressed in an organ-specific manner and regulate tissue-specific physiologic properties of tight junctions. This protein is expressed in the intestine. Alternatively spliced transcript variants with different 5' untranslated region have been found for this gene.[provided by RefSeq, Jan 2010],



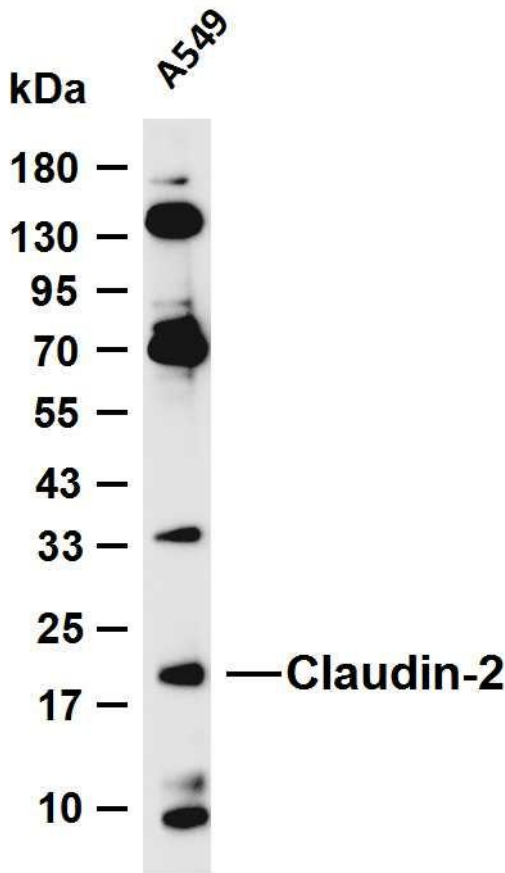


matters needing attention

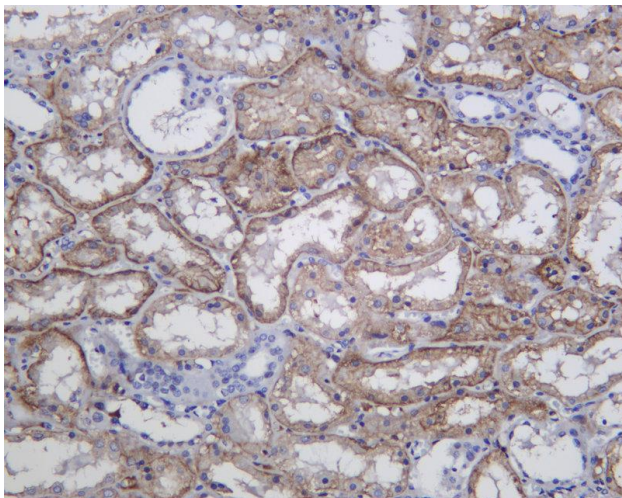
Avoid repeated freezing and thawing!

Usage suggestions

This product can be used in immunological reaction related experiments. For more information, please consult technical personnel.



Various whole cell lysates were separated by 4-20% SDS-PAGE, and the membrane was blotted with anti-Claudin-2 antibody. The HRP-conjugated Goat anti-Rabbit IgG (H + L) antibody was used to detect the antibody. Lane 1: A549 Predicted band size: 25kDa Observed band size: 20kDa



Human kidney was stained with anti-Claudin-2 Rabbit antibody

