



# Gab2 Rabbit mAb

<b>Catalog No</b>	YP-rAb-17544
<b>Isotype</b>	IgG
<b>Reactivity</b>	Human,Mouse,Rat
<b>Applications</b>	WB,IF,ELISA
<b>Gene Name</b>	GAB2
<b>Protein Name</b>	GRB2-associated-binding protein 2
<b>Purification Process</b>	Protein A
<b>Specificity</b>	Endogenous
<b>Formulation</b>	PBS, 50% glycerol, 0.05% Proclin 300, 0.05%BSA
<b>Source</b>	Monoclonal, Rabbit,IgG
<b>Dilution</b>	WB 1:500-1:2000; IF 1:200-1:1000; ELISA 1:5000-1:20000;
<b>Concentration</b>	0.5 mg/ml
<b>Purity</b>	≥90%
<b>Storage Stability</b>	-15° C to -25° C/1 year(Do not lower than -25° C)
<b>Synonyms</b>	GAB2 ; KIAA0571 ; GRB2-associated-binding protein 2 ; GRB2-associated binder 2 ; Growth factor receptor bound protein 2-associated protein 2 ; pp100
<b>Observed Band</b>	90kD
<b>Calculated Molecular Weight</b>	75kD
<b>Cell Pathway</b>	Cytoplasm . Cell membrane .
<b>Tissue Specificity</b>	Brain,Clones donated by Kazusa DNA Research Inst.,
<b>Function</b>	PTM:Dephosphorylated by PTPN11.,PTM:Phosphorylated on tyrosine residue(s) by the thrombopoietin receptor (TPOR), stem cell factor receptor (SCFR), and T-cell and B-cell antigen receptors, gp130, IL-2R and IL-3R.,similarity:Belongs to the GAB family.,similarity:Contains 1 PH domain.,subunit:Interacts with GRB2, PI-3 kinase and with other SH2-containing proteins.,
<b>Background</b>	GRB2 associated binding protein 2(GAB2) Homo sapiens This gene is a member of the GRB2-associated binding protein (GAB) gene family. These proteins contain pleckstrin homology (PH) domain, and bind SHP2 tyrosine phosphatase and GRB2 adapter protein. They act as adapters for transmitting various signals in response to stimuli through cytokine and growth factor receptors, and T- and B-cell antigen receptors. The protein encoded by this gene is the principal activator of phosphatidylinositol-3 kinase in response to activation of the high





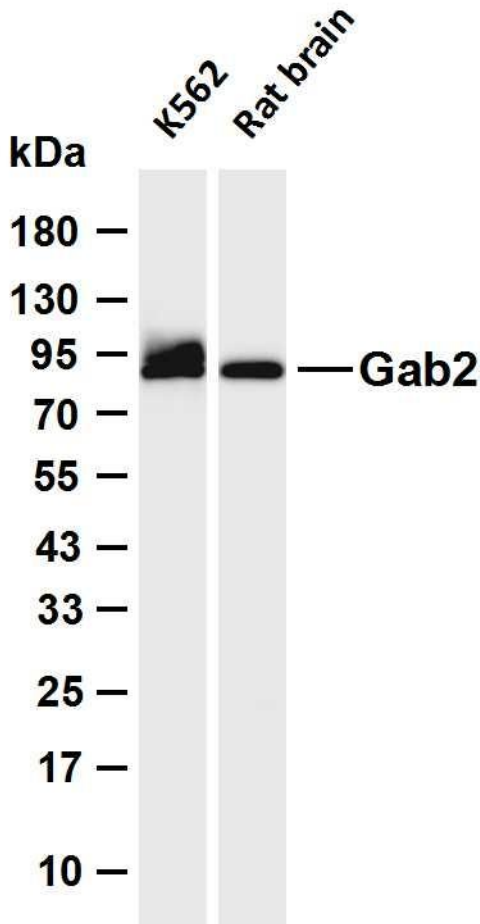
affinity IgE receptor. Two alternatively spliced transcripts encoding different isoforms have been described for this gene. [provided by RefSeq, Nov 2009],

**matters needing attention**

Avoid repeated freezing and thawing!

**Usage suggestions**

This product can be used in immunological reaction related experiments. For more information, please consult technical personnel.



Various whole cell lysates were separated by 4-20% SDS-PAGE, and the membrane was blotted with anti-Gab2 antibody. The HRP-conjugated Goat anti-Rabbit IgG (H + L) antibody was used to detect the antibody. Lane 1: K562 Lane 2: Rat brain Predicted band size: 75kDa Observed band size: 90kDa

