



AAT Rabbit mAb

Catalog No	YP-rAb-17542
Isotype	IgG
Reactivity	Human
Applications	WB,IHC,IF,IP,ELISA
Gene Name	SERPINA1
Protein Name	Alpha-1-antitrypsin
Purification Process	Protein A
Specificity	Endogenous
Formulation	PBS, 50% glycerol, 0.05% Proclin 300, 0.05%BSA
Source	Monoclonal, Rabbit,IgG
Dilution	IHC 1:200-1:1000; WB 1:2000-1:10000; IF 1:200-1:1000; ELISA 1:5000-1:20000; IP 1:50-1:200; Note: For IHC, we suggest antigen retrieval with TE buffer pH 9.0
Concentration	0.5 mg/ml
Purity	≥90%
Storage Stability	-15° C to -25° C/1 year(Do not lower than -25° C)
Synonyms	SERPINA1 ; AAT ; PI ; Alpha-1-antitrypsin ; Alpha-1 protease inhibitor ; Alpha-1-antiproteinase ; Serpin A1
Observed Band	48kD
Calculated Molecular Weight	46kD
Cell Pathway	Secreted. Endoplasmic reticulum. The S and Z allele are not secreted effectively and accumulate intracellularly in the endoplasmic reticulum.; [Short peptide from AAT]: Secreted, extracellular space, extracellular matrix.
Tissue Specificity	Ubiquitous. Expressed in leukocytes and plasma.
Function	Disease:Deficiency of the normal inhibitor in individuals homozygous for allele Z or M-Malton can result in the development of chronic emphysema or infantile liver cirrhosis.,Disease:The major physiological function of AAT is the protection of the lower respiratory tract against proteolytic destruction by human leukocyte elastase (HLE). A hereditary deficiency of AAT, is associated with a 20-30 fold increased risk of developing chronic obstructive pulmonary disease.,Disease:Variant Pittsburgh is the cause of bleeding diathesis.,Domain:The reactive center loop (RCL) extends out from the body of the protein and directs binding to the target protease. The protease cleaves the serpin at the reactive site within the RCL, establishing a covalent linkage between the carboxyl group of the serpin reactive site and the serine hydroxyl of the





protease. The resulting inactive serpin-protease complex is highly stable. Function: Inhibitor of serine proteases. Its primary target is elastase, but it also has a moderate affinity for plasmin and thrombin. Irreversibly inhibits trypsin, chymotrypsin and plasminogen activator. The aberrant form inhibits insulin-induced NO synthesis in platelets, decreases coagulation time and has proteolytic activity against insulin and plasmin. Function: Short peptide from AAT (SPAAT) is a reversible chymotrypsin inhibitor. It also inhibits elastase, but not trypsin. miscellaneous: The aberrant form is found in the plasma of chronic smokers, and persists after smoking is ceased. It can still be found ten years after smoking has ceased. online information: Alpha-1 antitrypsin entry, polymorphism: The sequence shown is that of the M1V allele which is the most common form of PI (44 to 49%). Other frequent alleles are: M1A 20 to 23%; M2 10 to 11%; M3 14 to 19%. PTM: Proteolytic processing may yield the truncated form that ranges from Asp-30 to Lys-418. PTM: Several isomers are observed, resulting from the combination of different N-linked glycan structures and mature N-terminus. N-linked glycan at Asn-107 is alternatively di-antennary, tri-antennary or tetra-antennary, whereas glycan at Asn-70 is di-antennary with trace amounts of tri-antennary, and glycan at Asn-271 is exclusively di-antennary. The structure of the antennas is Neu5Ac(alpha1-6)Gal(beta1-4)GlcNAc attached to the core structure Man(alpha1-6)[Man(alpha1-3)]Man(beta1-4)GlcNAc(beta1-4)GlcNAc. Some antennas are fucosylated, which forms a Lewis-X determinant. similarity: Belongs to the serpin family. tissue specificity: Plasma.

Background

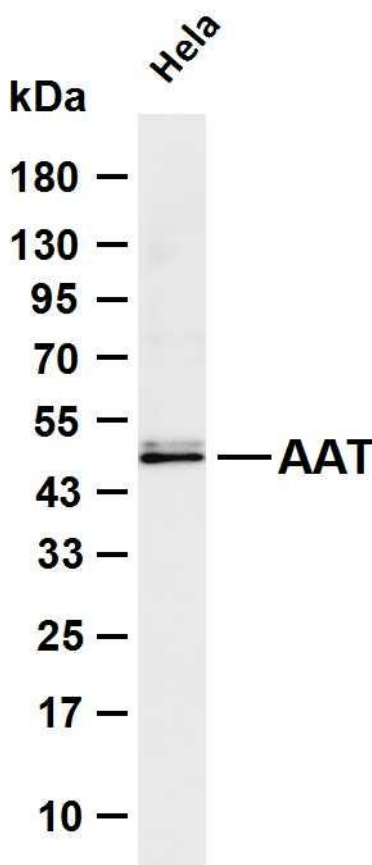
The protein encoded by this gene is secreted and is a serine protease inhibitor whose targets include elastase, plasmin, thrombin, trypsin, chymotrypsin, and plasminogen activator. Defects in this gene can cause emphysema or liver disease. Several transcript variants encoding the same protein have been found for this gene. [provided by RefSeq, Jul 2008],

matters needing attention

Avoid repeated freezing and thawing!

Usage suggestions

This product can be used in immunological reaction related experiments. For more information, please consult technical personnel.



Various whole cell lysates were separated by 4-20% SDS-PAGE, and the membrane was blotted with anti-AAT antibody. The HRP-conjugated Goat anti-Rabbit IgG (H + L) antibody was used to detect the antibody. Lane 1: HeLa Predicted band size: 46kDa Observed band size: 48kDa

杭州臻优品生物科技有限公司

热销产品:

蛋白、一抗、抗体对、ELISA试剂盒、生化试剂盒
CCK8试剂盒、QPCR检测试剂盒

检测服务:

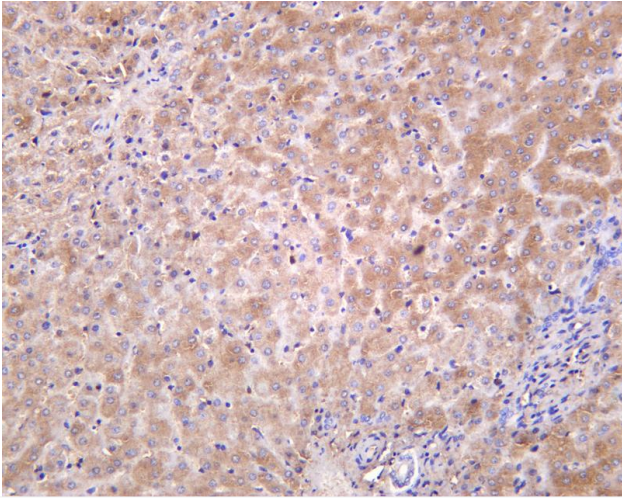
ELISA检测及定制服务 | 生化检测 | PCR、QPCR检测 | WB检测
ICO-IP检测 | 切片 | 染色 | 免疫组化 | 免疫荧光 | 透射电镜全套
| 宏基因组、转录组、基因组、蛋白组、代谢组测序



关注官网



关注客服



Human liver was stained with anti-AAT Rabbit antibody

杭州臻优品生物科技有限公司

热销产品:

蛋白、一抗、抗体对、ELISA试剂盒、生化试剂盒
CCK8试剂盒、QPCR检测试剂盒

检测服务:

ELISA检测及定制服务 | 生化检测 | PCR、QPCR检测 | WB检测
ICO-IP检测 | 切片 | 染色 | 免疫组化 | 免疫荧光 | 透射电镜全套
| 宏基因组、转录组、基因组、蛋白组、代谢组测序



关注官网



关注客服