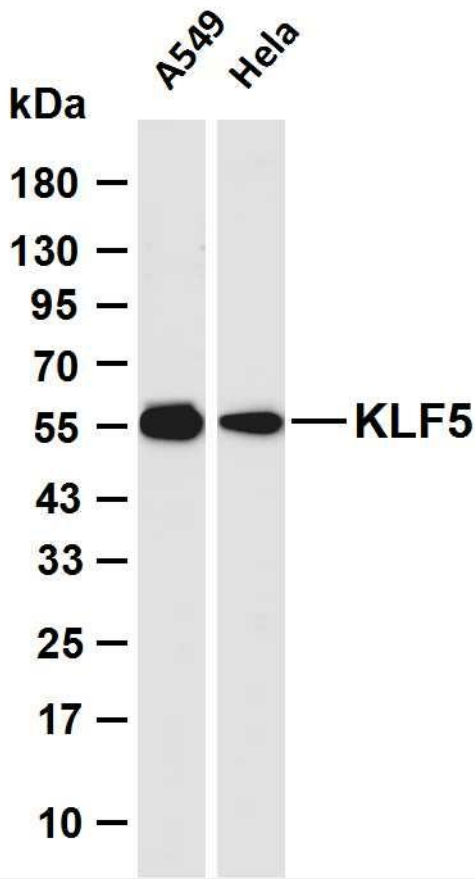




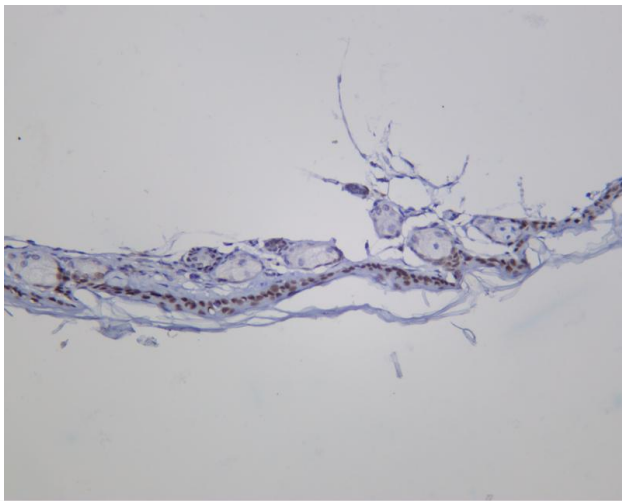
KLF5 Rabbit mAb

Catalog No	YP-rAb-17540
Isotype	IgG
Reactivity	Human,Mouse
Applications	WB,IHC,IF,IP,ELISA
Gene Name	KLF5 BTEB2 CKLF IKLF
Protein Name	Krueppel-like factor 5 (Basic transcription element-binding protein 2) (BTE-binding protein 2) (Colon krueppel-like factor) (GC-box-binding protein 2) (Intestinal-enriched krueppel-like factor) (Transcription factor BTEB2)
Purification Process	Protein A
Specificity	Endogenous
Formulation	PBS, 50% glycerol, 0.05% Proclin 300, 0.05%BSA
Source	Monoclonal, Rabbit,IgG
Dilution	IHC 1:200-1:1000; WB 1:2000-1:10000; IF 1:200-1:1000; ELISA 1:5000-1:20000; IP 1:50-1:200; Note: For IHC, we suggest antigen retrieval with TE buffer pH 9.0
Concentration	0.5 mg/ml
Purity	≥90%
Storage Stability	-15° C to -25° C/1 year(Do not lower than -25° C)
Synonyms	
Observed Band	55kD
Calculated Molecular Weight	51kD
Cell Pathway	Nucleus .
Tissue Specificity	Expressed only in testis and placenta.
Function	Transcription factor that binds to GC box promoter elements. Activates the transcription of these genes.
Background	
matters needing attention	Avoid repeated freezing and thawing!
Usage suggestions	This product can be used in immunological reaction related experiments. For more information, please consult technical personnel.





Various whole cell lysates were separated by 4-20% SDS-PAGE, and the membrane was blotted with anti-KLF5 antibody. The HRP-conjugated Goat anti-Rabbit IgG (H + L) antibody was used to detect the antibody. Lane 1: A549 Lane 2: HeLa Predicted band size: 51kDa Observed band size: 55kDa



Mouse skin was stained with anti-KLF5 Rabbit antibody

