



eIF4B Rabbit mAb

Catalog No	YP-rAb-17536
Isotype	IgG
Reactivity	Human
Applications	WB,IHC,IF,ELISA
Gene Name	EIF4B
Protein Name	Eif4b
Purification Process	Protein A
Specificity	Endogenous
Formulation	PBS, 50% glycerol, 0.05% Proclin 300, 0.05%BSA
Source	Monoclonal, Rabbit,IgG
Dilution	IHC 1:200-1:1000; WB 1:2000-1:10000; IF 1:200-1:1000; ELISA 1:5000-1:20000; Note: For IHC, we suggest antigen retrieval with TE buffer pH 9.0
Concentration	0.5 mg/ml
Purity	≥90%
Storage Stability	-15° C to -25° C/1 year(Do not lower than -25° C)
Synonyms	Eukaryotic translation initiation factor 4B ; eIF-4B ;
Observed Band	80kD
Calculated Molecular Weight	69kD
Cell Pathway	cytosol,polysome,eukaryotic translation initiation factor 4F complex,dendrite,neuronal cell body,
Tissue Specificity	Adipose tissue,Brain,Cervix carcinoma,Epithelium,Liver,Lung
Function	Required for the binding of mRNA to ribosomes. Functions in close association with EIF4-F and EIF4-A. Binds near the 5'-terminal cap of mRNA in presence of EIF-4F and ATP. Promotes the ATPase activity and the ATP-dependent RNA unwinding activity of both EIF4-A and EIF4-F.,similarity:Contains 1 RRM (RNA recognition motif) domain.,subunit:Self-associates and interacts with EIF3 p170 subunit.,
Background	cRequired for the binding of mRNA to ribosomes. Functions in close association with EIF4-F and EIF4-A. Binds near the 5'-terminal cap of mRNA in presence of EIF-4F and ATP. Promotes the ATPase activity and the ATP-dependent RNA unwinding activity of both EIF4-A and EIF4-F.,similarity:Contains 1 RRM (RNA recognition motif) domain.,subunit:Self-associates and interacts with EIF3 p170 subunit.



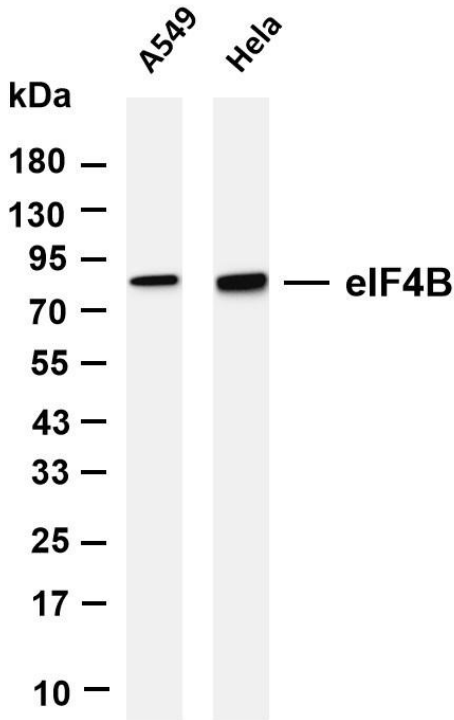


matters needing attention

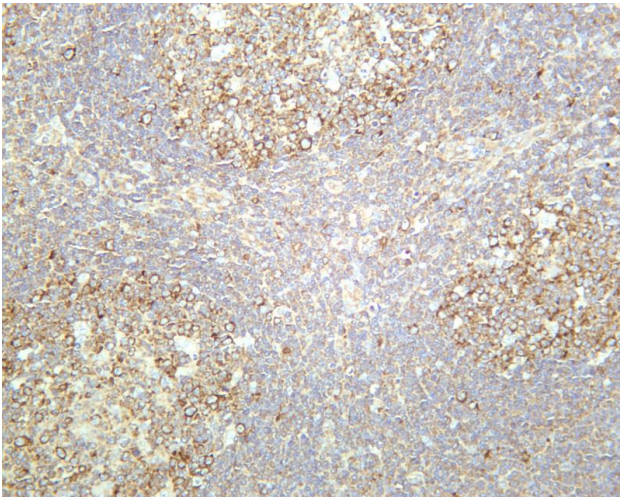
Avoid repeated freezing and thawing!

Usage suggestions

This product can be used in immunological reaction related experiments. For more information, please consult technical personnel.



Various whole cell lysates were separated by 4-20% SDS-PAGE, and the membrane was blotted with anti-eIF4B antibody. The HRP-conjugated Goat anti-Rabbit IgG(H + L) antibody was used to detect the antibody. Lane 1: A549 Lane 2: HeLa Predicted band size: 69kDa Observed band size: 80kDa



Human tonsil was stained with anti-eIF4B rabbit antibody

杭州臻优品生物科技有限公司

热销产品:

蛋白、一抗、抗体对、ELISA试剂盒、生化试剂盒
CCK8试剂盒、QPCR检测试剂盒

检测服务:

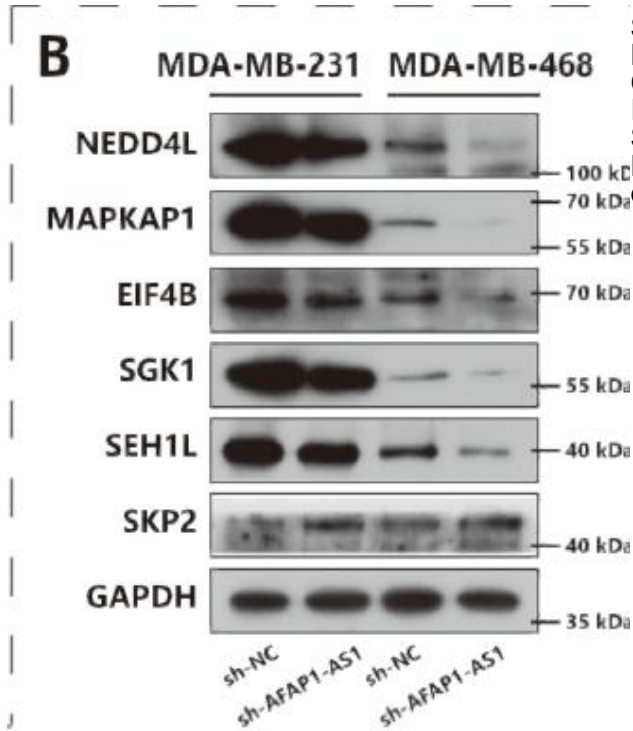
ELISA检测及定制服务 | 生化检测 | PCR、QPCR检测 | WB检测
ICO-IP检测 | 切片 | 染色 | 免疫组化 | 免疫荧光 | 透射电镜全套
| 宏基因组、转录组、基因组、蛋白组、代谢组测序



关注官网

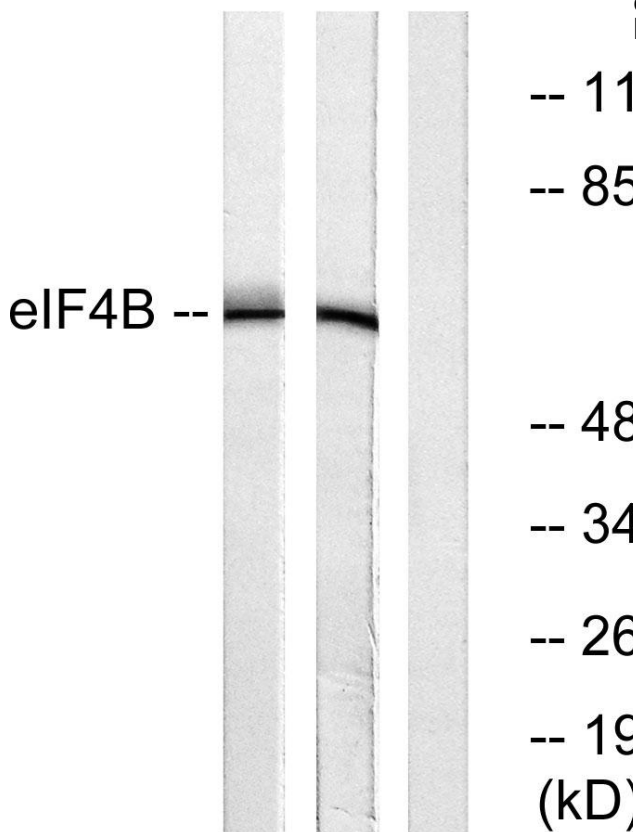


关注客服

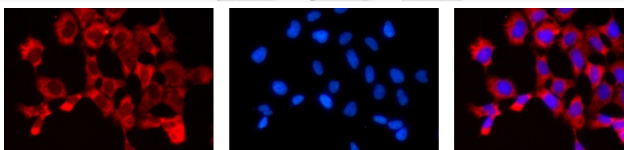


SP1-Induced Upregulation of LncRNA AFAP1-AS1 Promotes Tumor Progression in Triple-Negative Breast Cancer by Regulating mTOR Pathway.
INTERNATIONAL JOURNAL OF MOLECULAR SCIENCES Yidong Zhou WB
Human 1:500 MDA-231 cell, MDA-MB-468 cell

HepG2 HUVEC HepG2



Western blot analysis of lysates from HepG2 and HUVEC cells, using eIF4B Antibody. The lane on the right is blocked with the synthesized peptide.



Immunofluorescence analysis of HEK293. Picture A: eIF4B antibody (red). Picture B: DAPI (blue). Picture C: Merge of A+B

