



Caspase-6 Rabbit mAb

Catalog No	YP-rAb-17527
Isotype	IgG
Reactivity	Human,Mouse,Rat
Applications	WB,IHC,IF,IP,ELISA
Gene Name	CASP6
Protein Name	Caspase6
Purification Process	Protein A
Specificity	Endogenous
Formulation	PBS, 50% glycerol, 0.05% Proclin 300, 0.05%BSA
Source	Monoclonal, Rabbit,IgG
Dilution	IHC 1:200-1:500; WB 1:2000-1:10000; IF 1:200-1:1000; ELISA 1:5000-1:20000; IP 1:50-1:200; Note: For IHC, we suggest antigen retrieval with TE buffer pH 9.0
Concentration	0.5 mg/ml
Purity	≥90%
Storage Stability	-15° C to -25° C/1 year(Do not lower than -25° C)
Synonyms	CASP6 ; MCH2 ; Caspase-6 ; CASP-6 ; Apoptotic protease Mch-2
Observed Band	33kD
Calculated Molecular Weight	33kD
Cell Pathway	Cytoplasm . Nucleus .
Tissue Specificity	Lung,Lymphocyte,T-cell,
Function	Catalytic activity:Strict requirement for Asp at position P1 and has a preferred cleavage sequence of Val-Glu-His-Asp-[-].enzyme regulation:Activation is suppressed by phosphorylation at Ser-257.,Function:Involved in the activation cascade of caspases responsible for apoptosis execution. Cleaves poly(ADP-ribose) polymerase in vitro, as well as lamins. Overexpression promotes programmed cell death.,PTM:Cleavages by caspase-3, caspase-8 or -10 generate the two active subunits.,similarity:Belongs to the peptidase C14A family.,subunit:Heterotetramer that consists of two anti-parallel arranged heterodimers, each one formed by a 18 kDa (p18) and a 11 kDa (p11) subunit.,
Background	This gene encodes a member of the cysteine-aspartic acid protease (caspase) family of enzymes. Sequential activation of caspases plays a central role in the execution-phase of cell apoptosis. Caspases exist as inactive proenzymes which





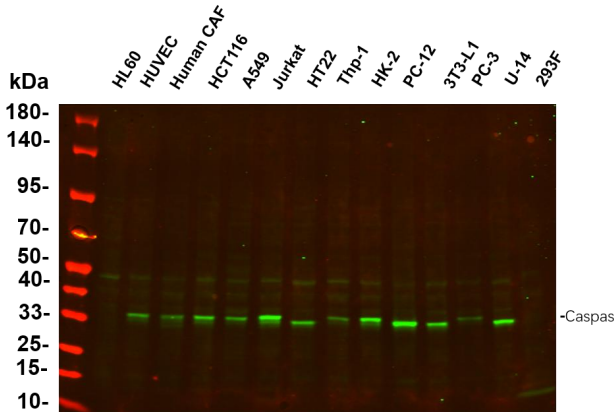
undergo proteolytic processing at conserved aspartic acid residues to produce two subunits, large and small, that dimerize to form the active enzyme. This protein is processed by caspases 7, 8 and 10, and is thought to function as a downstream enzyme in the caspase activation cascade. Alternative splicing of this gene results in multiple transcript variants that encode different isoforms. [provided by RefSeq, Oct 2015],

matters needing attention

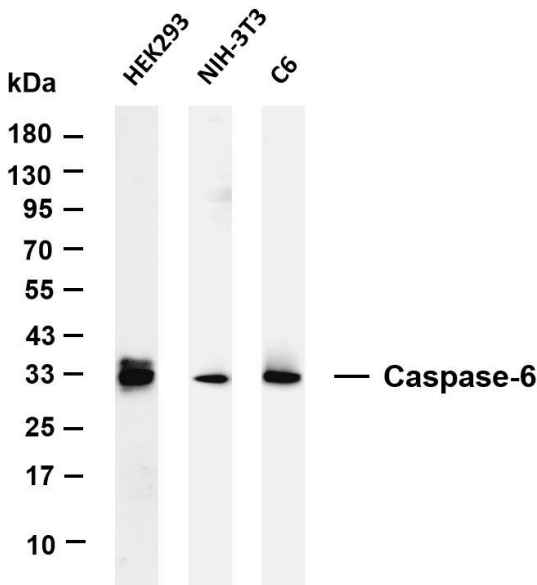
Avoid repeated freezing and thawing!

Usage suggestions

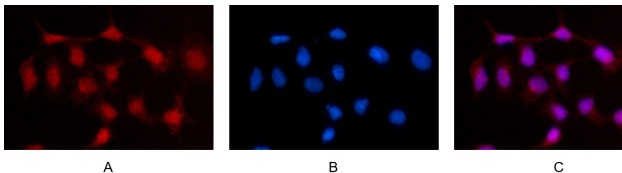
This product can be used in immunological reaction related experiments. For more information, please consult technical personnel.



Various whole cell lysates were separated by 4-20% SDS-PAGE, and the primary antibody was used at 4 °C, over night with a 1:5000 dilution. The Dylight 800-conjugated Goat anti-Rabbit antibody



Various whole cell lysates were separated by 4-20% SDS-PAGE, and the membrane was blotted with anti-Caspase-6 antibody. The HRP-conjugated Goat anti-Rabbit IgG(H + L) antibody was used to detect the antibody. Lane 1: HEK293 Lane 2: NIH-3T3 Lane 3: C6 Predicted band size: 33kDa Observed band size: 33kDa



Immunofluorescence analysis of HEK293. Picture A: Caspase-6 antibody (red). Picture B: DAPI (blue). Picture C: Merge of A+B

