



MAP2 Rabbit mAb

Catalog No	YP-rAb-17525
Isotype	IgG
Reactivity	Human,Mouse,Rat
Applications	WB,IHC,IF,ELISA
Gene Name	MAP2
Protein Name	Microtubule-associated protein 2
Purification Process	Protein A
Specificity	Endogenous
Formulation	PBS, 50% glycerol, 0.05% Proclin 300, 0.05%BSA
Source	Monoclonal, Rabbit,IgG
Dilution	IHC 1:200-1:1000; WB 1:1000-1:5000; IF 1:200-1:1000; ELISA 1:5000-1:20000; Note: For IHC, we suggest antigen retrieval with TE buffer pH 9.0
Concentration	0.5 mg/ml
Purity	≥90%
Storage Stability	-15° C to -25° C/1 year(Do not lower than -25° C)
Synonyms	MAP2 ; Microtubule-associated protein 2 ; MAP-2
Observed Band	280kD
Calculated Molecular Weight	200kD
Cell Pathway	Cytoplasm, cytoskeleton . Cell projection, dendrite .
Tissue Specificity	Brain,Brain cortex,Epithelium,Pancreas,Testis,
Function	Alternative products:Additional isoforms seem to exist,Function:The exact function of MAP2 is unknown but MAPs may stabilize the microtubules against depolymerization. They also seem to have a stiffening effect on microtubules.,PTM:MAP2A/c is phosphorylated. Phosphorylated upon DNA damage, probably by ATM or ATR.,similarity:Contains 3 Tau/MAP repeats.,similarity:Contains 4 Tau/MAP repeats.,
Background	This gene encodes a protein that belongs to the microtubule-associated protein family. The proteins of this family are thought to be involved in microtubule assembly, which is an essential step in neurogenesis. The products of similar genes in rat and mouse are neuron-specific cytoskeletal proteins that are enriched in dendrites, implicating a role in determining and stabilizing dendritic shape during neuron development. A number of alternatively spliced variants encoding distinct





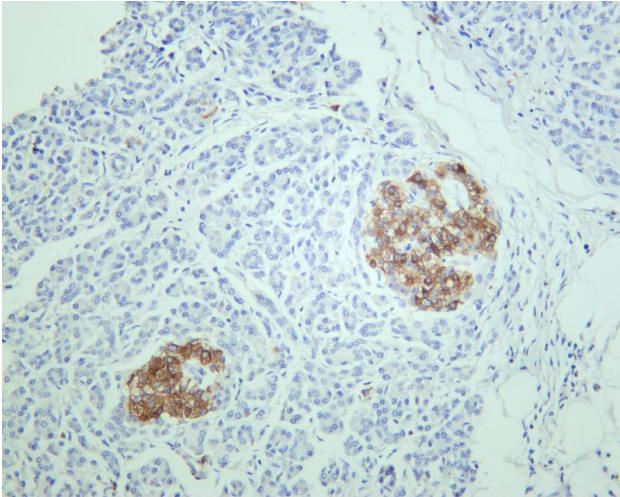
isoforms have been described. [provided by RefSeq, Jan 2010],

matters needing attention

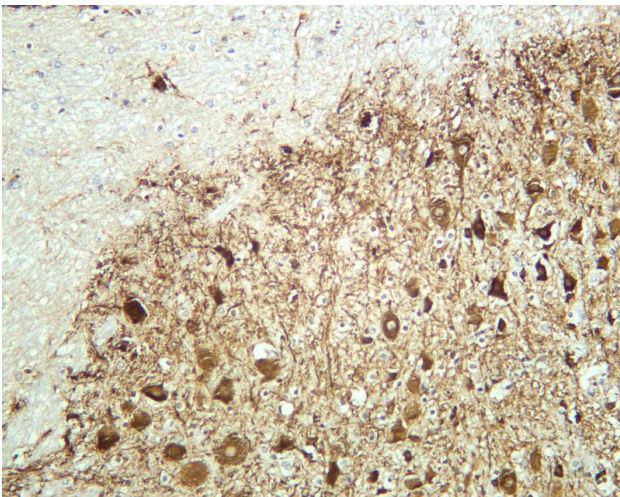
Avoid repeated freezing and thawing!

Usage suggestions

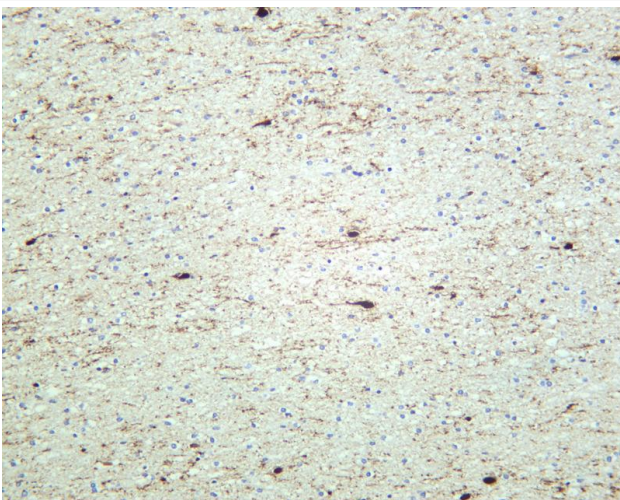
This product can be used in immunological reaction related experiments. For more information, please consult technical personnel.



Human pancreas was stained with anti-MAP2 rabbit antibody



Mouse brain was stained with anti-MAP2 rabbit antibody



Human brain was stained with anti-MAP2 rabbit antibody

杭州臻优品生物科技有限公司

热销产品:

蛋白、一抗、抗体对、ELISA试剂盒、生化试剂盒
CCK8试剂盒、QPCR检测试剂盒

检测服务:

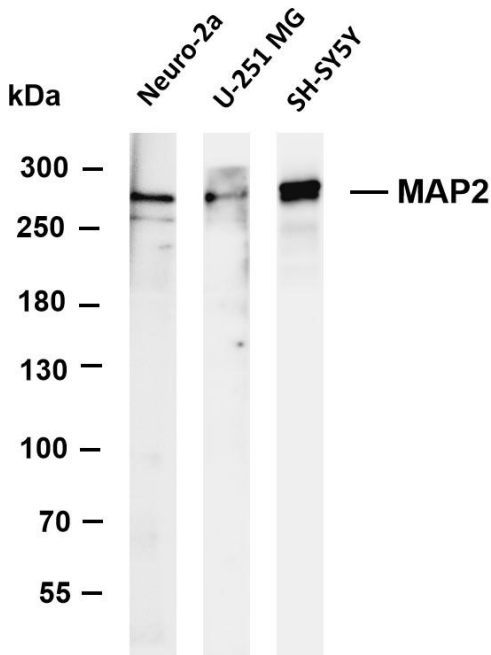
ELISA检测及定制服务 | 生化检测 | PCR、QPCR检测 | WB检测
ICO-IP检测 | 切片 | 染色 | 免疫组化 | 免疫荧光 | 透射电镜全套
| 宏基因组、转录组、基因组、蛋白组、代谢组测序



关注官网



关注客服



Various whole cell lysates were separated by 4-8% SDS-PAGE, and the membrane was blotted with anti-MAP2 antibody. The HRP-conjugated Goat anti-Rabbit IgG(H + L) antibody was used to detect the antibody. Lane 1: Neuro-2a Lane 2: U-251 MG Lane 2: SH-SY5Y Predicted band size: 200kDa Observed band size: 280kDa

杭州臻优品生物科技有限公司

热销产品:

蛋白、一抗、抗体对、ELISA试剂盒、生化试剂盒
CCK8试剂盒、QPCR检测试剂盒

检测服务:

ELISA检测及定制服务 | 生化检测 | PCR、QPCR检测 | WB检测
ICO-IP检测 | 切片 | 染色 | 免疫组化 | 免疫荧光 | 透射电镜全套
| 宏基因组、转录组、基因组、蛋白组、代谢组测序



关注官网



关注客服