



# VCAM-1 Rabbit mAb

<b>Catalog No</b>	YP-rAb-17524
<b>Isotype</b>	IgG
<b>Reactivity</b>	Human,Mouse,Rat
<b>Applications</b>	WB,IHC,IF,IP,ELISA
<b>Gene Name</b>	VCAM1 L1CAM
<b>Protein Name</b>	VCAM1
<b>Purification Process</b>	Protein A
<b>Specificity</b>	Endogenous
<b>Formulation</b>	PBS, 50% glycerol, 0.05% Proclin 300, 0.05%BSA
<b>Source</b>	Monoclonal, Rabbit,IgG
<b>Dilution</b>	IHC 1:500-1:1000; WB 1:2000-1:10000; IF 1:200-1:1000; ELISA 1:5000-1:20000; IP 1:50-1:200; Note: For IHC, we suggest antigen retrieval with TE buffer pH 9.0
<b>Concentration</b>	0.5 mg/ml
<b>Purity</b>	≥90%
<b>Storage Stability</b>	-15° C to -25° C/1 year(Do not lower than -25° C)
<b>Synonyms</b>	Vascular cell adhesion protein 1 ; V-CAM 1 ; VCAM-1 ; INCAM-100 ; CD antigen CD106 ;
<b>Observed Band</b>	110kD
<b>Calculated Molecular Weight</b>	81kD
<b>Cell Pathway</b>	Membrane; Single-pass type I membrane protein.
<b>Tissue Specificity</b>	Expressed on inflamed vascular endothelium, as well as on macrophage-like and dendritic cell types in both normal and inflamed tissue.
<b>Function</b>	Alternative products:Additional isoforms seem to exist,Disease:May play an important role in the genesis of atherosclerosis and rheumatoid arthritis.,Domain:Either the first or the fourth Ig-like C2-type domain is required for VLA4-dependent cell adhesion.,Function:Important in cell-cell recognition. Appears to function in leukocyte-endothelial cell adhesion. Interacts with the beta-1 integrin VLA4 on leukocytes, and mediates both adhesion and signal transduction. The VCAM1/VLA4 interaction may play a pathophysiologic role both in immune responses and in leukocyte emigration to sites of inflammation.,induction:By cytokines (e.g. IL-1, TNF-alpha),.online information:VCAM-1,online information:VCAM1 entry,PTM:Sialoglycoprotein.,similarity:Contains 7 Ig-like C2-type (immunoglobulin-like) domains.,subunit:Binds to ECMV-D capsid proteins and

## 杭州臻优品生物科技有限公司

### 热销产品:

蛋白、一抗、抗体对、ELISA试剂盒、生化试剂盒  
CCK8试剂盒、QPCR检测试剂盒

### 检测服务:

ELISA检测及定制服务 | 生化检测 | PCR、QPCR检测 | WB检测  
ICO-IP检测 | 切片 | 染色 | 免疫组化 | 免疫荧光 | 透射电镜全套  
| 宏基因组、转录组、基因组、蛋白组、代谢组测序



关注官网



关注客服



acts as a receptor for this virus.,tissue specificity:Expressed on inflamed vascular endothelium, as well as on macrophage-like and dendritic cell types in both normal and inflamed tissue.,

### Background

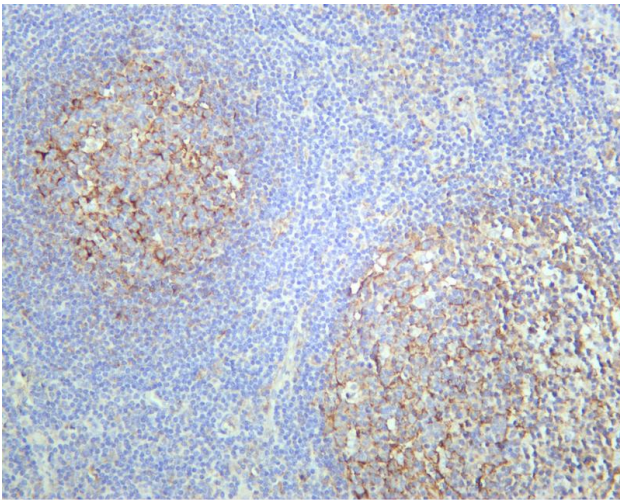
This gene is a member of the Ig superfamily and encodes a cell surface sialoglycoprotein expressed by cytokine-activated endothelium. This type I membrane protein mediates leukocyte-endothelial cell adhesion and signal transduction, and may play a role in the development of atherosclerosis and rheumatoid arthritis. Three alternatively spliced transcripts encoding different isoforms have been described for this gene. [provided by RefSeq, Dec 2010],

### matters needing attention

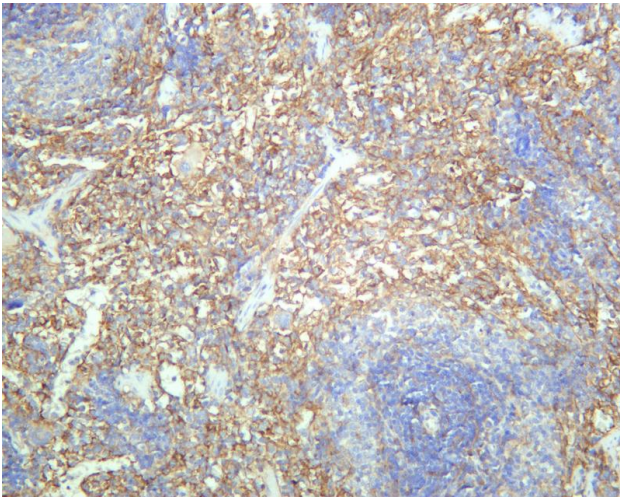
Avoid repeated freezing and thawing!

### Usage suggestions

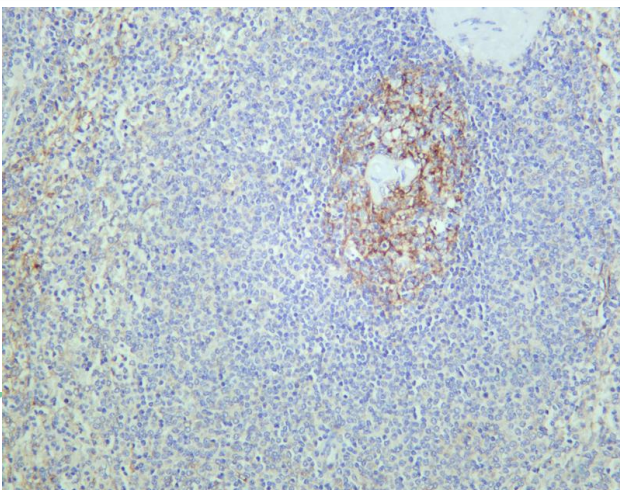
This product can be used in immunological reaction related experiments. For more information, please consult technical personnel.



Human tonsil was stained with anti-VCAM1 rabbit antibody

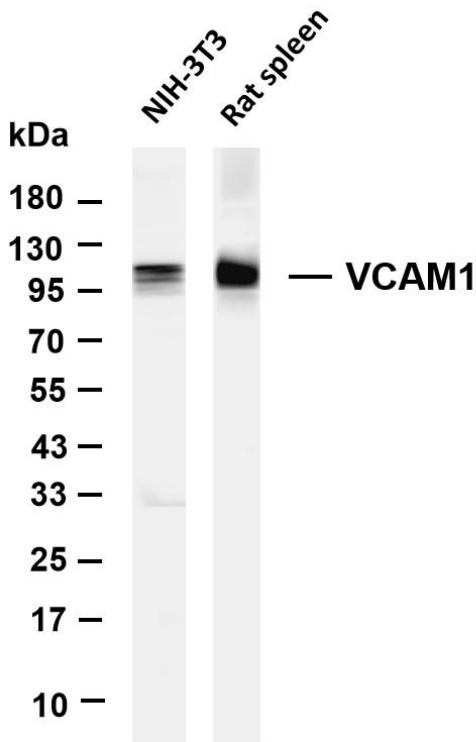


Rat spleen was stained with anti-VCAM1 rabbit antibody



Human spleen was stained with anti-VCAM1 rabbit antibody





Various whole cell lysates were separated by 4-20% SDS-PAGE, and the membrane was blotted with anti-VCAM1 antibody. The HRP-conjugated Goat anti-Rabbit IgG(H + L) antibody was used to detect the antibody. Lane 1: NIH-3T3 Lane 2: Rat spleen  
Predicted band size: 81kDa Observed band size: 110kDa

## 杭州臻优品生物科技有限公司

### 热销产品:

蛋白、一抗、抗体对、ELISA试剂盒、生化试剂盒  
CCK8试剂盒、QPCR检测试剂盒

### 检测服务:

ELISA检测及定制服务 | 生化检测 | PCR、QPCR检测 | WB检测  
ICO-IP检测 | 切片 | 染色 | 免疫组化 | 免疫荧光 | 透射电镜全套  
| 宏基因组、转录组、基因组、蛋白组、代谢组测序



关注官网



关注客服