



MFN1 Rabbit mAb

Catalog No	YP-rAb-17515
Isotype	IgG
Reactivity	Human,Mouse,Rat
Applications	WB,IF,IP,ELISA
Gene Name	MFN1
Protein Name	MFN1
Purification Process	Protein A
Specificity	Endogenous
Formulation	PBS, 50% glycerol, 0.05% Proclin 300, 0.05%BSA
Source	Monoclonal, Rabbit,IgG
Dilution	WB 1:2000-1:10000; IF 1:200-1:1000; ELISA 1:5000-1:20000; IP 1:50-1:200;
Concentration	0.5 mg/ml
Purity	≥90%
Storage Stability	-15° C to -25° C/1 year(Do not lower than -25° C)
Synonyms	Mitofusin-1 ; Fzo homolog ; Transmembrane GTPase MFN1 ;
Observed Band	84kD
Calculated Molecular Weight	84kD
Cell Pathway	Mitochondrion outer membrane ; Multi-pass membrane protein .; [Isoform 2]: Cytoplasm .
Tissue Specificity	Detected in kidney and heart (at protein level) (PubMed:12759376). Ubiquitous (PubMed:11950885, PubMed:12759376). Expressed at slightly higher level in kidney and heart (PubMed:12759376). Isoform 2 may be overexpressed in some tumors, such as lung cancers (PubMed:11751411).
Function	Catalytic activity:GTP + H(2)O = GDP + phosphate.,Function:Essential transmembrane GTPase, which mediates mitochondrial fusion. Fusion of mitochondria occurs in many cell types and constitutes an important step in mitochondria morphology, which is balanced between fusion and fission. MFN1 acts independently of the cytoskeleton. Overexpression induces the formation of mitochondrial networks.,similarity:Belongs to the mitofusin family.,subunit:Forms homomultimers and heteromultimers with MFN2. Multimerization, which is probably mediated by the coiled coil region, may play an essential role in mitochondrion fusion (By similarity). Participates in a high molecular weight multiprotein complex.,tissue specificity:Ubiquitous. Expressed at slightly higher level in kidney and heart. Isoform 2 may be overexpressed in some tumors, such





as lung cancers.,

Background

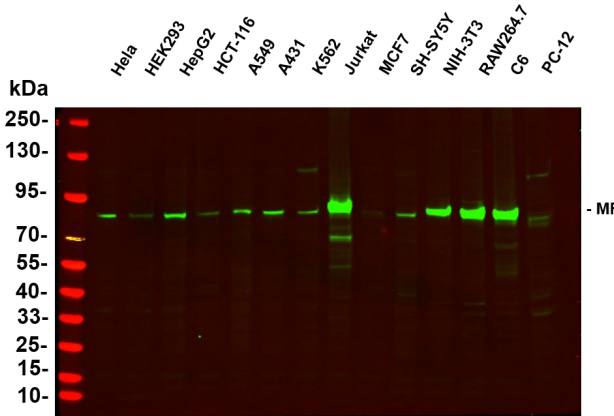
The protein encoded by this gene is a mediator of mitochondrial fusion. This protein and mitofusin 2 are homologs of the Drosophila protein fuzzy onion (Fzo). They are mitochondrial membrane proteins that interact with each other to facilitate mitochondrial targeting. [provided by RefSeq, Jul 2008],

matters needing attention

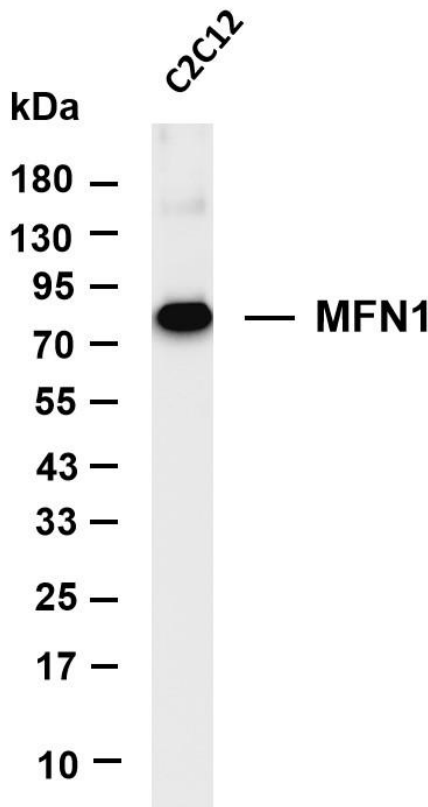
Avoid repeated freezing and thawing!

Usage suggestions

This product can be used in immunological reaction related experiments. For more information, please consult technical personnel.



Various whole cell lysates were separated by 4-20% SDS-PAGE, and the primary antibody was used at 4~C, over night with a 1:5000 dilution. The Dylight 800-conjugated Goat anti-Rabbit antibody



Various whole cell lysates were separated by 4-20% SDS-PAGE, and the membrane was blotted with anti-MFN1 antibody. The HRP-conjugated Goat anti-Rabbit IgG(H + L) antibody was used to detect the antibody. Lane 1: C2C12 Predicted band size: 84kDa Observed band size: 84kDa

