



ULK1 Rabbit mAb

Catalog No	YP-rAb-17511
Isotype	IgG
Reactivity	Human,Mouse,Rat
Applications	WB,IF,IP,ELISA
Gene Name	ULK1
Protein Name	Serine/threonine-protein kinase ULK1
Purification Process	Protein A
Specificity	Endogenous
Formulation	PBS, 50% glycerol, 0.05% Proclin 300, 0.05%BSA
Source	Monoclonal, Rabbit,IgG
Dilution	WB 1:2000-1:10000; IF 1:200-1:1000; ELISA 1:5000-1:20000; IP 1:50-1:200;
Concentration	0.5 mg/ml
Purity	≥90%
Storage Stability	-15° C to -25° C/1 year(Do not lower than -25° C)
Synonyms	ULK1 ; KIAA0722 ; Serine/threonine-protein kinase ULK1 ; Autophagy-related protein 1 homolog ; ATG1 ; hATG1 ; Unc-51-like kinase 1
Observed Band	130kD
Calculated Molecular Weight	113kD
Cell Pathway	Cytoplasm, cytosol . Preautophagosomal structure . Under starvation conditions, is localized to punctate structures primarily representing the isolation membrane that sequesters a portion of the cytoplasm resulting in the formation of an autophagosome. .
Tissue Specificity	Ubiquitously expressed. Detected in the following adult tissues: skeletal muscle, heart, pancreas, brain, placenta, liver, kidney, and lung.
Function	Catalytic activity:ATP + a protein = ADP + a phosphoprotein.,Function:Involved in axon growth. Plays an essential role in neurite extension of cerebellar granule cells.,similarity:Belongs to the protein kinase superfamily. Ser/Thr protein kinase family. APG1/unc-51/ULK1 subfamily.,similarity:Contains 1 protein kinase domain.,subunit:Interacts with GABARAP and GABARAPL2.,tissue specificity:Ubiquitously expressed. Detected in the following adult tissues: skeletal muscle, heart, pancreas, brain, placenta, liver, kidney, and lung.,
Background	catalytic activity:ATP + a protein = ADP + a phosphoprotein.,function:Involved in axon growth. Plays an essential role in neurite extension of cerebellar granule





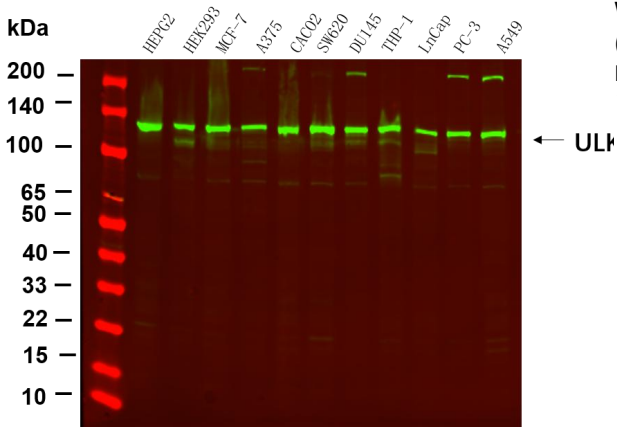
cells.,similarity:Belongs to the protein kinase superfamily. Ser/Thr protein kinase family. APG1/unc-51/ULK1 subfamily.,similarity:Contains 1 protein kinase domain.,subunit:Interacts with GABARAP and GABARAPL2.,tissue specificity:Ubiquitously expressed. Detected in the following adult tissues: skeletal muscle, heart, pancreas, brain, placenta, liver, kidney, and lung.,

matters needing attention

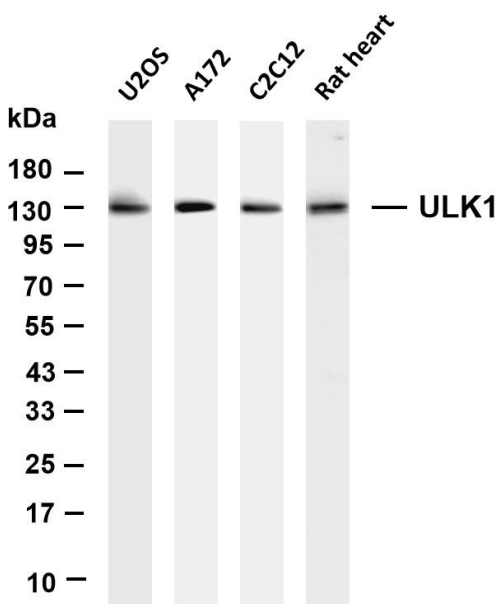
Avoid repeated freezing and thawing!

Usage suggestions

This product can be used in immunological reaction related experiments. For more information, please consult technical personnel.



Western blot analysis of lysates from various cell , (Green) primary antibody was diluted at 1:5000, 4° over night, Dylight 800 secondary antibody was diluted at 1:10000, 37° 1hour.



Various whole cell lysates were separated by 4-20% SDS-PAGE, and the membrane was blotted with anti-ULK1 antibody. The HRP-conjugated Goat anti-Rabbit IgG(H + L) antibody was used to detect the antibody. Lane 1: U2OS Lane 2: A172 Lane 3: C2C12 Lane 4: Rat heart Predicted band size: 113kDa Observed band size: 130kDa

