



AFP Rabbit mAb

Catalog No	YP-rAb-17509
Isotype	IgG
Reactivity	Human,Mouse,Rat
Applications	WB,IHC,IF,IP,ELISA
Gene Name	AFP
Protein Name	Alpha-1-Fetoprotein(AFP)
Purification Process	Protein A
Specificity	Endogenous
Formulation	PBS, 50% glycerol, 0.05% Proclin 300, 0.05%BSA
Source	Monoclonal, Rabbit,IgG
Dilution	IHC 1:200-1:1000; WB 1:2000-1:10000; IF 1:200-1:1000; ELISA 1:5000-1:20000; IP 1:50-1:200; Note: For IHC, we suggest antigen retrieval with TE buffer pH 9.0
Concentration	0.5 mg/ml
Purity	≥90%
Storage Stability	-15° C to -25° C/1 year(Do not lower than -25° C)
Synonyms	AFP ; HPAFP ; Alpha-fetoprotein ; Alpha-1-fetoprotein ; Alpha-fetoglobulin
Observed Band	65kD
Calculated Molecular Weight	68kD
Cell Pathway	Secreted.
Tissue Specificity	Plasma. Synthesized by the fetal liver and yolk sac.
Function	developmental stage:Occurs in the plasma of fetuses more than 4 weeks old, reaches the highest levels during the 12th-16th week of gestation, and drops to trace amounts after birth. The serum level in adults is usually less than 40 ng/ml. AFP occurs also at high levels in the plasma and ascitic fluid of adults with hepatoma.,Function:Binds copper, nickel, and fatty acids as well as, and bilirubin less well than, serum albumin. Only a small percentage (less than 2%) of the human AFP shows estrogen-binding properties.,online information:Alpha-fetoprotein entry,PTM:Independent studies suggest heterogeneity of the N-terminal sequence of the mature protein and of the cleavage site of the signal sequence.,PTM:Sulfated.,similarity:Belongs to the ALB/AFP/VDB family.,similarity:Contains 3 albumin domains.,subunit:Dimeric and trimeric forms have been found in addition to the monomeric form.,tissue specificity:Plasma. Synthesized by the fetal liver and yolk sac.,





Background

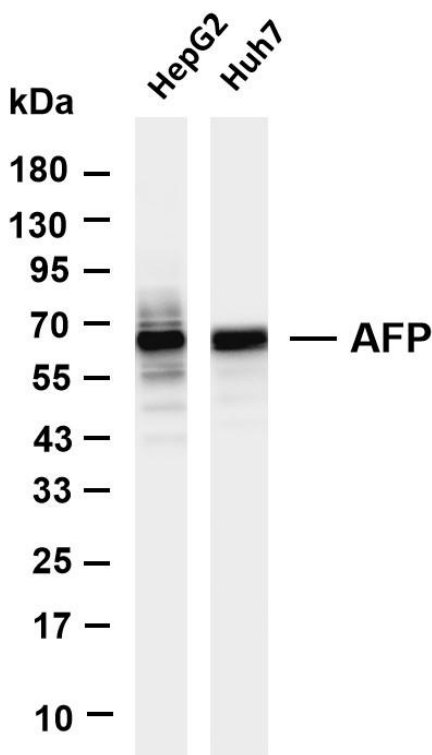
This gene encodes alpha-fetoprotein, a major plasma protein produced by the yolk sac and the liver during fetal life. Alpha-fetoprotein expression in adults is often associated with hepatoma or teratoma. However, hereditary persistence of alpha-fetoprotein may also be found in individuals with no obvious pathology. The protein is thought to be the fetal counterpart of serum albumin, and the alpha-fetoprotein and albumin genes are present in tandem in the same transcriptional orientation on chromosome 4. Alpha-fetoprotein is found in monomeric as well as dimeric and trimeric forms, and binds copper, nickel, fatty acids and bilirubin. The level of alpha-fetoprotein in amniotic fluid is used to measure renal loss of protein to screen for spina bifida and anencephaly. [provided by RefSeq, Jul 2008],

matters needing attention

Avoid repeated freezing and thawing!

Usage suggestions

This product can be used in immunological reaction related experiments. For more information, please consult technical personnel.



Various whole cell lysates were separated by 4-20% SDS-PAGE, and the membrane was blotted with anti-AFP antibody. The HRP-conjugated Goat anti-Rabbit IgG(H + L) antibody was used to detect the antibody. Lane 1: HepG2 Lane 2: Huh7 Predicted band size: 68kDa Observed band size: 65kDa

