



TRAF6 Rabbit mAb

Catalog No	YP-rAb-17504
Isotype	IgG
Reactivity	Human,Mouse,Rat
Applications	WB,IHC,IF,ELISA
Gene Name	TRAF6
Protein Name	TNF receptor-associated factor 6
Purification Process	Protein A
Specificity	Endogenous
Formulation	PBS, 50% glycerol, 0.05% Proclin 300, 0.05%BSA
Source	Monoclonal, Rabbit,IgG
Dilution	IHC 1:100-1:500; WB 1:2000-1:10000; IF 1:200-1:1000; ELISA 1:5000-1:20000; Note: For IHC, we suggest antigen retrieval with TE buffer pH 9.0
Concentration	0.5 mg/ml
Purity	≥90%
Storage Stability	-15° C to -25° C/1 year(Do not lower than -25° C)
Synonyms	TRAF6 ; RNF85 ; TNF receptor-associated factor 6 ; E3 ubiquitin-protein ligase TRAF6 ; Interleukin-1 signal transducer ; RING finger protein 85
Observed Band	60kD
Calculated Molecular Weight	60kD
Cell Pathway	Cytoplasm . Cytoplasm, cell cortex . Nucleus . Lipid droplet . Found in the nuclei of some aggressive B-cell lymphoma cell lines as well as in the nuclei of both resting and activated T- and B-lymphocytes. Found in punctate nuclear body protein complexes. Ubiquitination may occur in the cytoplasm and sumoylation in the nucleus. RSAD2/viperin recruits it to the lipid droplet (By similarity). .
Tissue Specificity	Expressed in heart, brain, placenta, lung, liver, skeletal muscle, kidney and pancreas.
Function	Domain:The coiled coil domain mediates homo- and hetero-oligomerization.,Domain:The MATH/TRAF domain binds to receptor cytoplasmic domains.,Function:Adapter protein and signal transducer that links members of the tumor necrosis factor receptor family to different signaling pathways by association with the receptor cytoplasmic domain and kinases. Also involved in the IL-1 signaling pathway via MYD88 and IRAK kinases. Seems to be involved in IL-17 signaling (By similarity). Mediates activation of NF-kappa-B and JNK. May function as an E3 ubiquitin ligase.,pathway:Protein modification; protein ubiquitination.,PTM:Polyubiquitinated.,similarity:Contains 1 MATH

杭州臻优品生物科技有限公司

热销产品:

蛋白、一抗、抗体对、ELISA试剂盒、生化试剂盒
CCK8试剂盒、QPCR检测试剂盒

检测服务:

ELISA检测及定制服务 | 生化检测 | PCR、QPCR检测 | WB检测
ICO-IP检测 | 切片 | 染色 | 免疫组化 | 免疫荧光 | 透射电镜全套
| 宏基因组、转录组、基因组、蛋白组、代谢组测序



关注官网



关注客服



domain.,similarity:Contains 1 RING-type zinc finger.,similarity:Contains 2 TRAF-type zinc fingers.,subunit:Homotrimer (Probable). Binds to TNFRSF5/CD40 and TNFRSF11A/RANK. Associates with NGFR, TNFRSF17, IRAK1, IRAK2, IRAK3, IRAK4, RIPK2, MAP3K1, MAP3K5, MAP3K14, CSK, and TRAF-interacting protein TRIP and TRAF and TNF receptor associated protein TTRAP. Interacts with IL17R. Interacts with SQSTM1 bridging NTRK1 and NGFR. Forms a ternary complex with SQSTM1 and PRKCZ (By similarity). Interacts with PELI1, PELI2 and PELI3. Binds UBE2V1. Interacts with MAVS/IPS1. Interacts with TAX1BP1. Interacts with IL1RL1. Interacts with TRAFD1. Interacts with ZNF675. Interacts with JUB. Interacts with TICAM1 and TICAM2.,tissue specificity:Expressed in heart, brain, placenta, lung, liver, skeletal muscle, kidney and pancreas.,

Background

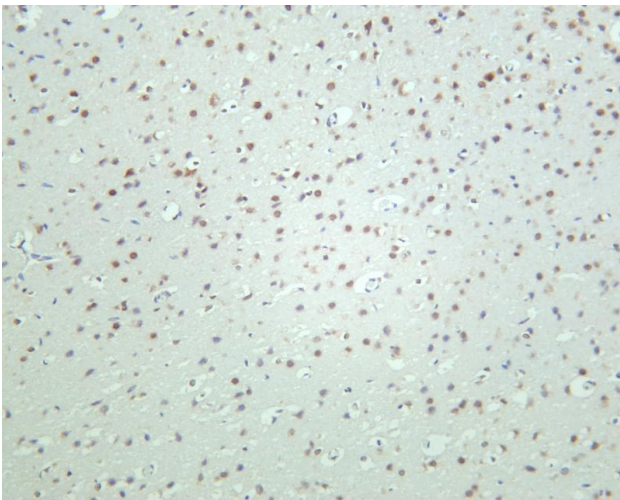
TNF receptor associated factor 6(TRAF6) Homo sapiens The protein encoded by this gene is a member of the TNF receptor associated factor (TRAF) protein family. TRAF proteins are associated with, and mediate signal transduction from, members of the TNF receptor superfamily. This protein mediates signaling from members of the TNF receptor superfamily as well as the Toll/IL-1 family. Signals from receptors such as CD40, TNFSF11/RANCE and IL-1 have been shown to be mediated by this protein. This protein also interacts with various protein kinases including IRAK1/IRAK, SRC and PKCzeta, which provides a link between distinct signaling pathways. This protein functions as a signal transducer in the NF-kappaB pathway that activates I kappaB kinase (IKK) in response to proinflammatory cytokines. The interaction of this protein with UBE2N/UBC13, and UBE2V1/UEV1A, which are ubiquitin conjugating enzymes catalyzing the formation of polyubiquitin chains, has

matters needing attention

Avoid repeated freezing and thawing!

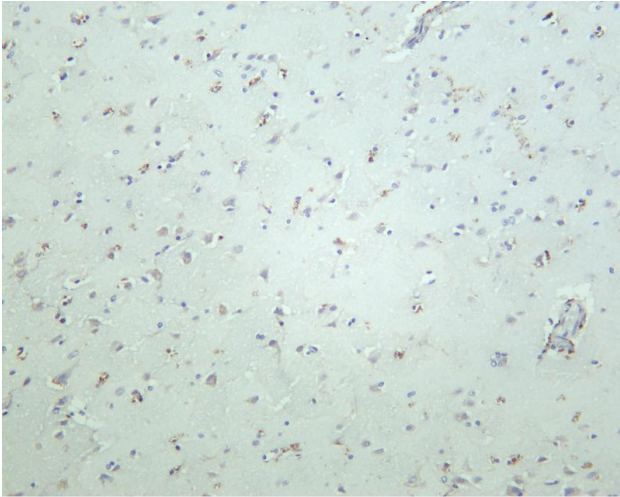
Usage suggestions

This product can be used in immunological reaction related experiments. For more information, please consult technical personnel.

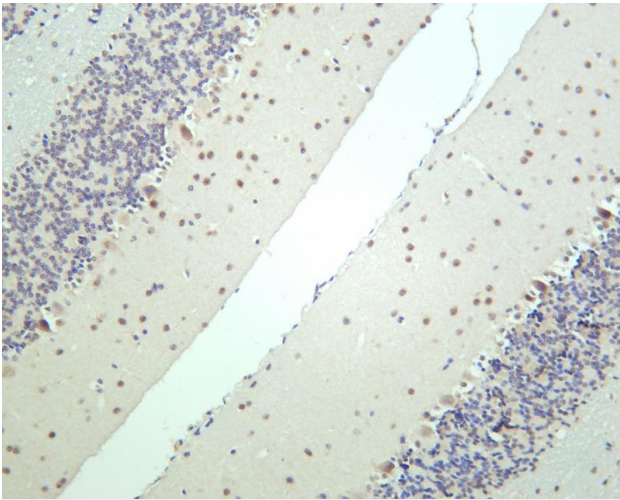


Rat brain was stained with anti-TRAF6 rabbit antibody

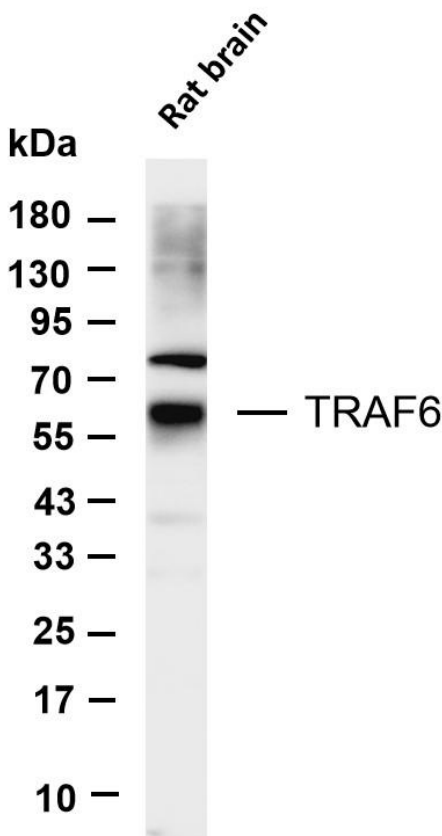




Human brain was stained with anti-TRAF6 rabbit antibody



Mouse brain was stained with anti-TRAF6 rabbit antibody



Various whole cell lysates were separated by 4-20% SDS-PAGE, and the membrane was blotted with anti-TRAF6 antibody. The HRP-conjugated Goat anti-Rabbit IgG(H + L) antibody was used to detect the antibody. Lane 1: Rat brain Predicted band size: 60kDa Observed band size: 60kDa





杭州臻优品生物科技有限公司

热销产品:

蛋白、一抗、抗体对、ELISA试剂盒、生化试剂盒
CCK8试剂盒、QPCR检测试剂盒

检测服务:

ELISA检测及定制服务 | 生化检测 | PCR、QPCR检测 | WB检测
ICO-IP检测 | 切片 | 染色 | 免疫组化 | 免疫荧光 | 透射电镜全套
| 宏基因组、转录组、基因组、蛋白组、代谢组测序



关注官网



关注客服