



# Nrf2 Rabbit mAb

<b>Catalog No</b>	YP-rAb-17488
<b>Isotype</b>	IgG
<b>Reactivity</b>	Human,Mouse,Rat
<b>Applications</b>	WB,IHC,IF,IP,ELISA
<b>Gene Name</b>	NFE2L2 NRF2
<b>Protein Name</b>	Nuclear factor erythroid 2-related factor 2 (NF-E2-related factor 2) (NFE2-related factor 2) (HEBP1) (Nuclear factor, erythroid derived 2, like 2)
<b>Purification Process</b>	Protein A
<b>Specificity</b>	Endogenous
<b>Formulation</b>	PBS, 50% glycerol, 0.05% Proclin 300, 0.05%BSA
<b>Source</b>	Monoclonal, Rabbit,IgG
<b>Dilution</b>	IHC 1:1000-1:5000; WB 1:2000-1:10000; IF 1:200-1:1000; ELISA 1:5000-1:20000; IP 1:50-1:200; Note: For IHC, we suggest antigen retrieval with TE buffer pH 9.0
<b>Concentration</b>	0.5 mg/ml
<b>Purity</b>	≥90%
<b>Storage Stability</b>	-15° C to -25° C/1 year(Do not lower than -25° C)
<b>Synonyms</b>	Nuclear factor erythroid 2-related factor 2 ; NF-E2-related factor 2 ; NFE2-related factor 2 ; HEBP1 ; Nuclear factor, erythroid derived 2, like 2 ;
<b>Observed Band</b>	100kD
<b>Calculated Molecular Weight</b>	68kD
<b>Cell Pathway</b>	Cytoplasmic, Nuclear
<b>Tissue Specificity</b>	Widely expressed. Highest expression in adult muscle, kidney, lung, liver and in fetal muscle.
<b>Function</b>	Domain:Acidic activation domain in the N-terminus, and DNA binding domain in the C-terminus.,Function:Transcription activator that binds to antioxidant response (ARE) elements in the promoter regions of target genes. Important for the coordinated up-regulation of genes in response to oxidative stress. May be involved in the transcriptional activation of genes of the beta-globin cluster by mediating enhancer activity of hypersensitive site 2 of the beta-globin locus control region.,PTM:Phosphorylation of Ser-40 by PKC in response to oxidative stress dissociates NFE2L2 from its cytoplasmic inhibitor KEAP1, promoting its translocation into the nucleus.,similarity:Belongs to the bZIP family.,similarity:Belongs to the bZIP family. CNC subfamily.,similarity:Contains 1 bZIP domain.,subcellular location:Cytosolic under unstressed conditions,

杭州臻优品生物科技有限公司

热销产品:

蛋白、一抗、抗体对、ELISA试剂盒、生化试剂盒  
CCK8试剂盒、QPCR检测试剂盒

检测服务:

ELISA检测及定制服务 | 生化检测 | PCR、QPCR检测 | WB检测  
ICO-IP检测 | 切片 | 染色 | 免疫组化 | 免疫荧光 | 透射电镜全套  
| 宏基因组、转录组、基因组、蛋白组、代谢组测序



关注官网



关注客服



translocates into the nucleus upon induction by electrophilic agents.,subunit:Heterodimer. May bind DNA with an unknown protein. Interacts with KEAP1. Interacts via its leucine-zipper domain with the coiled-coil domain of PMF1.,tissue specificity:Widely expressed. Highest expression in adult muscle, kidney, lung, liver and in fetal muscle.,

### Background

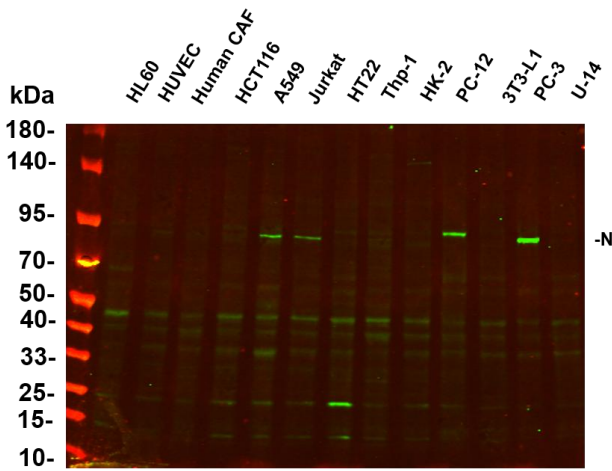
nuclear factor, erythroid 2 like 2(NFE2L2) Homo sapiens This gene encodes a transcription factor which is a member of a small family of basic leucine zipper (bZIP) proteins. The encoded transcription factor regulates genes which contain antioxidant response elements (ARE) in their promoters; many of these genes encode proteins involved in response to injury and inflammation which includes the production of free radicals. Multiple transcript variants encoding different isoforms have been characterized for this gene. [provided by RefSeq, Sep 2015],

### matters needing attention

Avoid repeated freezing and thawing!

### Usage suggestions

This product can be used in immunological reaction related experiments. For more information, please consult technical personnel.

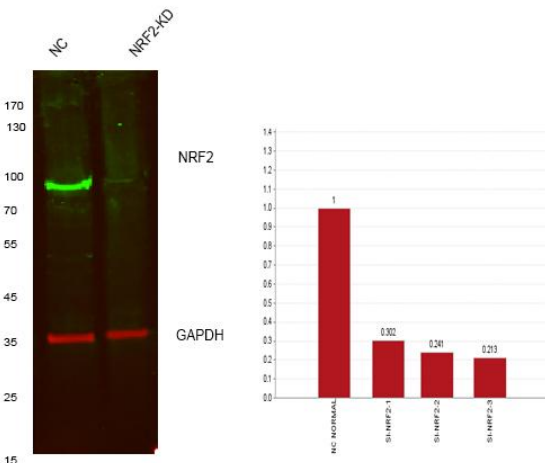
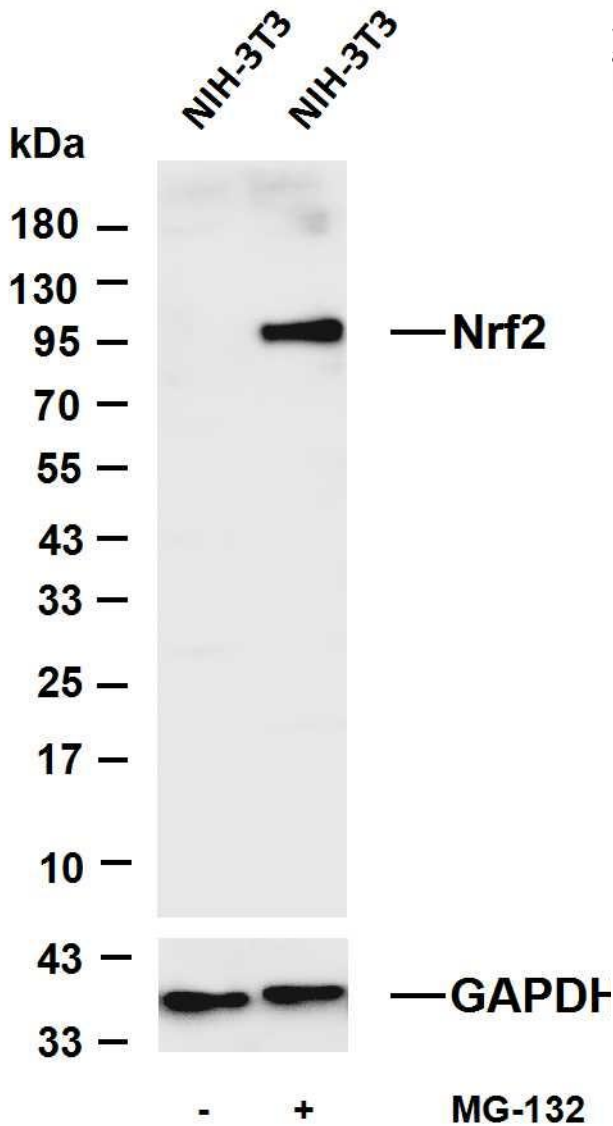


Various whole cell lysates were separated by 4-20% SDS-PAGE, and the primary antibody was used at 4°C, over night with a 1:20000 dilution . The Dylight 800-conjugated Goat anti-Rabbit antibody



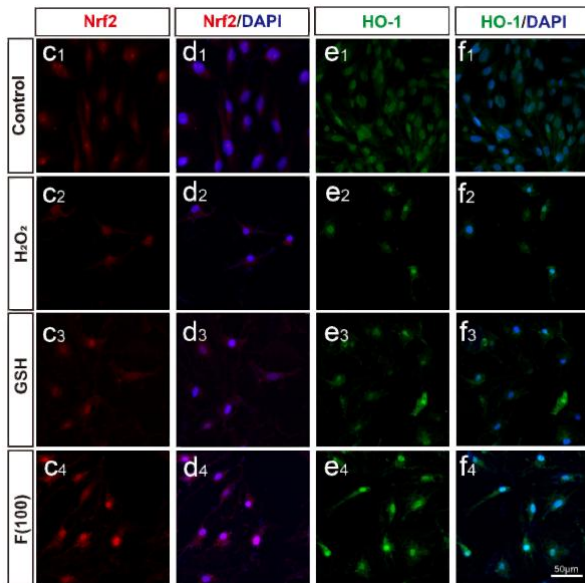


Various whole cell lysates were separated by 4-20% SDS-PAGE, and the membrane was blotted with anti-Nrf2 antibody. The HRP-conjugated Goat anti-Rabbit IgG(H + L) antibody was used to detect the antibody. Lane 1: NIH-3T3 Lane 1: NIH-3T3 treated with MG-132 for 18 hou

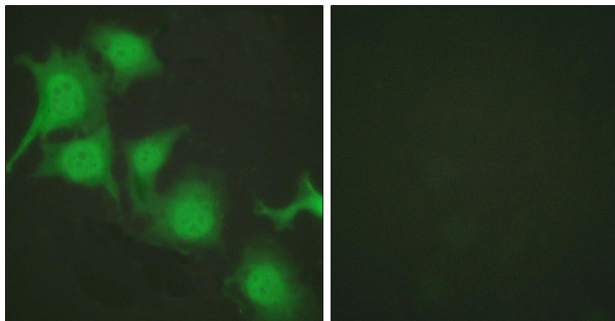


Western blot analysis of lysates from 1)Hela cell , 2)Hela cells knockdown by NRF2-siRNA (F:CAUUGAUGUUUCUGAUCUATT,R:UAGAUCAGAAA CAUCAAUGTT), (Green) primary antibody was diluted at 1:1000, 4° over night, Dylight 800 secondary antibody was diluted at 1:10000, 37° 1hour. (Red) GAPDH Monoclonal Antibody(5B7) antibody was diluted at 1:5000 as loading control, 4° over night, Dylight 680 secondary antibody was diluted at 1:10000, 37° 1hour.





Fullerol rescues the light-induced retinal damage by modulating Müller glia cell fate. Redox Biology  
Haiwei Xu MIO-M1 cell



Immunofluorescence analysis of HUVEC cells, using Nrf2 Antibody. The picture on the right is blocked with the synthesized peptide.

