



Claudin 3 Rabbit mAb

Catalog No	YP-rAb-17487
Isotype	IgG
Reactivity	Human,Mouse,Rat
Applications	WB,IHC,IF,IP,ELISA
Gene Name	CLDN3 C7orf1 CPETR2
Protein Name	C7orf1;Claudin-3;Claudin3;CLD3_HUMAN;CLDN 3;Cldn3;Clostridium perfringens enterotoxin receptor 2;CPE R2;CPE receptor 2;CPE-R 2;CPE-receptor 2;CPETR 2;CPETR2;HRVP 1;HRVP1;Rat ventral prostate 1 like protein;Rat ventral prostate.1 protein homolog;RVP1;Ventral prostate.1 like protein;Ventral prostate.1 protein homolog
Purification Process	Protein A
Specificity	Endogenous
Formulation	PBS, 50% glycerol, 0.05% Proclin 300, 0.05%BSA
Source	Monoclonal, Rabbit,IgG
Dilution	IHC 1:200-1:1000; WB 1:2000-1:10000; IF 1:200-1:1000; ELISA 1:5000-1:20000; IP 1:50-1:200; Note: For IHC, we suggest antigen retrieval with TE buffer pH 9.0
Concentration	0.5 mg/ml
Purity	≥90%
Storage Stability	-15° C to -25° C/1 year(Do not lower than -25° C)
Synonyms	C7orf1 ; Claudin-3 ; Claudin3 ; CLD3_HUMAN ; CLDN 3 ; Cldn3 ; Clostridium perfringens enterotoxin receptor 2 ; CPE R2 ; CPE receptor 2 ; CPE-R 2 ; CPE-receptor 2 ; CPETR 2 ; CPETR2 ; HRVP 1 ; HRVP1 ; Rat ventral prostate 1 like protein ; Rat ventral prostate.1 protein homolog ; RVP1 ; Ventral prostate.1 like protein ; Ventral prostate.1 protein homolog
Observed Band	20kD
Calculated Molecular Weight	23kD
Cell Pathway	Membranous
Tissue Specificity	Colon/ Appendix
Function	Disease:Haploinsufficiency of CLDN3 may be the cause of certain cardiovascular and musculo-skeletal abnormalities observed in Williams-Beuren syndrome (WBS), a rare developmental disorder. It is a contiguous gene deletion syndrome involving genes from chromosome band 7q11.23.,Function:Plays a major role in tight junction-specific obliteration of the intercellular space, through

杭州臻优品生物科技有限公司

热销产品:

蛋白、一抗、抗体对、ELISA试剂盒、生化试剂盒
CCK8试剂盒、QPCR检测试剂盒

检测服务:

ELISA检测及定制服务 | 生化检测 | PCR、QPCR检测 | WB检测
ICO-IP检测 | 切片 | 染色 | 免疫组化 | 免疫荧光 | 透射电镜全套
| 宏基因组、转录组、基因组、蛋白组、代谢组测序



关注官网



关注客服



calcium-independent cell-adhesion activity.,similarity:Belongs to the claudin family.,subunit:Can form homo- and heteropolymers with other CLDN. Homopolymers interact with CLDN1 and CLDN2 homopolymers. Directly interacts with TJP1/ZO-1, TJP2/ZO-2 and TJP3/ZO-3.,

Background

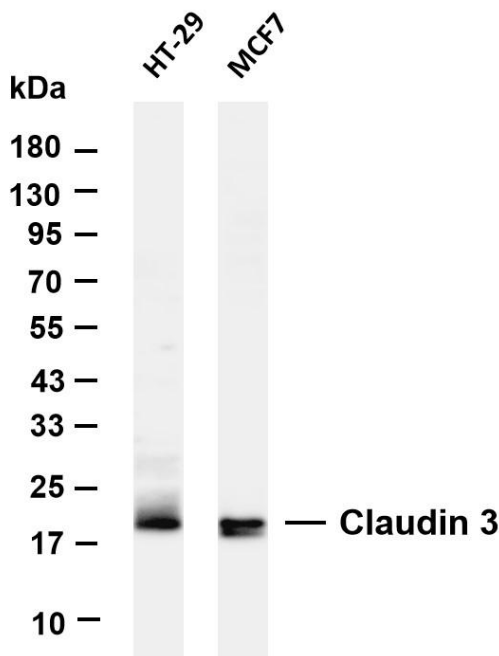
Tight junctions represent one mode of cell-to-cell adhesion in epithelial or endothelial cell sheets, forming continuous seals around cells and serving as a physical barrier to prevent solutes and water from passing freely through the paracellular space. These junctions are comprised of sets of continuous networking strands in the outwardly facing cytoplasmic leaflet, with complementary grooves in the inwardly facing extracytoplasmic leaflet. The protein encoded by this intronless gene, a member of the claudin family, is an integral membrane protein and a component of tight junction strands. It is also a low-affinity receptor for Clostridium perfringens enterotoxin, and shares aa sequence similarity with a putative apoptosis-related protein found in rat. [provided by RefSeq, Jul 2008],

matters needing attention

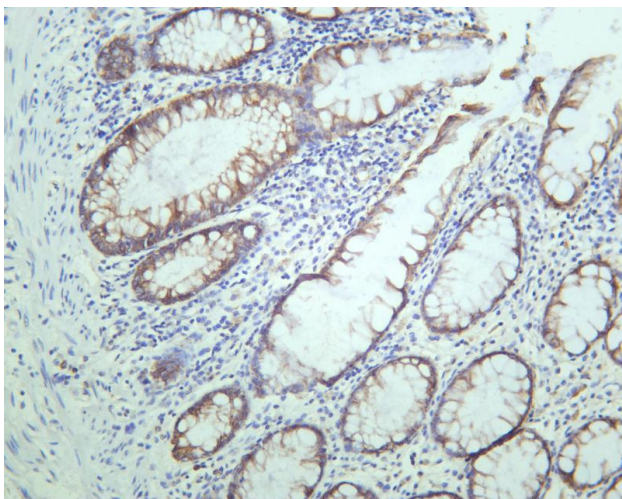
Avoid repeated freezing and thawing!

Usage suggestions

This product can be used in immunological reaction related experiments. For more information, please consult technical personnel.



Various whole cell lysates were separated by 4-20% SDS-PAGE, and the membrane was blotted with anti-Claudin 3 antibody. The HRP-conjugated Goat anti-Rabbit IgG(H + L) antibody was used to detect the antibody. Lane 1: HT-29 Lane 2: MCF7 Predicted band size: 23kDa Observed band size: 20kDa



Human colon was stained with anti-Claudin 3 rabbit antibody

杭州臻优品生物科技有限公司

热销产品:

蛋白、一抗、抗体对、ELISA试剂盒、生化试剂盒
CCK8试剂盒、QPCR检测试剂盒

检测服务:

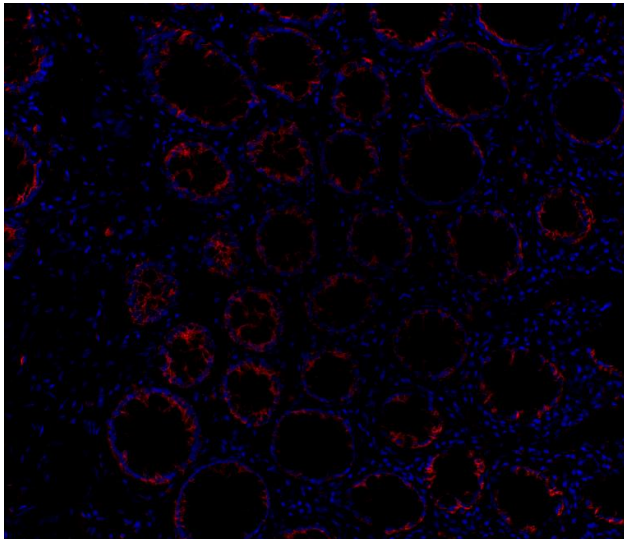
ELISA检测及定制服务 | 生化检测 | PCR、QPCR检测 | WB检测
ICO-IP检测 | 切片 | 染色 | 免疫组化 | 免疫荧光 | 透射电镜全套
| 宏基因组、转录组、基因组、蛋白组、代谢组测序



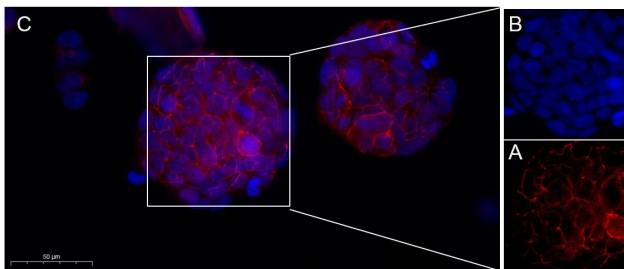
关注官网



关注客服



Immunofluorescence analysis of Human colon



Immunofluorescence analysis of HT-29 cell. 1,primary Antibody was diluted at 1:200(4~C overnight). 2, Goat Anti Rabbit IgG (H&L) - AFfluor 594 Secondary antibody(catalog No: RS3611) was diluted at 1:500(room temperature, 50min).

