



# HES1 Rabbit mAb

<b>Catalog No</b>	YP-rAb-17483
<b>Isotype</b>	IgG
<b>Reactivity</b>	Human,Mouse,Rat
<b>Applications</b>	WB,IHC,IF,ELISA
<b>Gene Name</b>	HES1 BHLHB39 HL HRY
<b>Protein Name</b>	Transcription factor HES-1 (Class B basic helix-loop-helix protein 39) (bHLHb39) (Hairy and enhancer of split 1) (Hairy homolog) (Hairy-like protein) (hHL)
<b>Purification Process</b>	Protein A
<b>Specificity</b>	Endogenous
<b>Formulation</b>	PBS, 50% glycerol, 0.05% Proclin 300, 0.05%BSA
<b>Source</b>	Monoclonal, Rabbit,IgG
<b>Dilution</b>	IHC 1:4000-1:20000; WB 1:2000-1:10000; IF 1:200-1:1000; ELISA 1:5000-1:20000; Note: For IHC, we suggest antigen retrieval with TE buffer pH 9.0
<b>Concentration</b>	0.5 mg/ml
<b>Purity</b>	≥90%
<b>Storage Stability</b>	-15° C to -25° C/1 year(Do not lower than -25° C)
<b>Synonyms</b>	
<b>Observed Band</b>	30kD
<b>Calculated Molecular Weight</b>	30kD
<b>Cell Pathway</b>	Nucleus.
<b>Tissue Specificity</b>	Kidney,Prostate,Skin,
<b>Function</b>	Domain:Has a particular type of basic domain (presence of a helix-interrupting proline) that binds to the N-box (CACNAG), rather than the canonical E-box (CANNTG).,Domain:The bHLH, as well as cooperation between the central Orange domain and the C-terminal WRPW motif, is required for transcriptional repressor activity.,Domain:The C-terminal WRPW motif is a transcriptional repression domain necessary for the interaction with Groucho/TLE family members, transcriptional corepressors recruited to specific target DNA by Hairy-related proteins.,Function:Transcriptional repressor of genes that require a bHLH protein for their transcription. May act as a negative regulator of myogenesis by inhibiting the functions of MYOD1 and ASH1. Binds DNA on N-box motifs: 5'-CACNAG-3' with high affinity and on E-box motifs: 5'-CANNTG-3' with low affinity.,similarity:Contains 1 basic helix-loop-helix (bHLH)

## 杭州臻优品生物科技有限公司

### 热销产品:

蛋白、一抗、抗体对、ELISA试剂盒、生化试剂盒  
CCK8试剂盒、QPCR检测试剂盒

### 检测服务:

ELISA检测及定制服务 | 生化检测 | PCR、QPCR检测 | WB检测  
ICO-IP检测 | 切片 | 染色 | 免疫组化 | 免疫荧光 | 透射电镜全套  
| 宏基因组、转录组、基因组、蛋白组、代谢组测序



关注官网



关注客服



domain.,similarity:Contains 1 Orange domain.,subunit:Transcription repression requires formation of a complex with a corepressor protein of the Groucho/TLE family. Interacts (via WPRW motif) with TLE1, and more weakly with TLE2. Interacts with HES6 (By similarity). Interacts with SIRT1.,

### Background

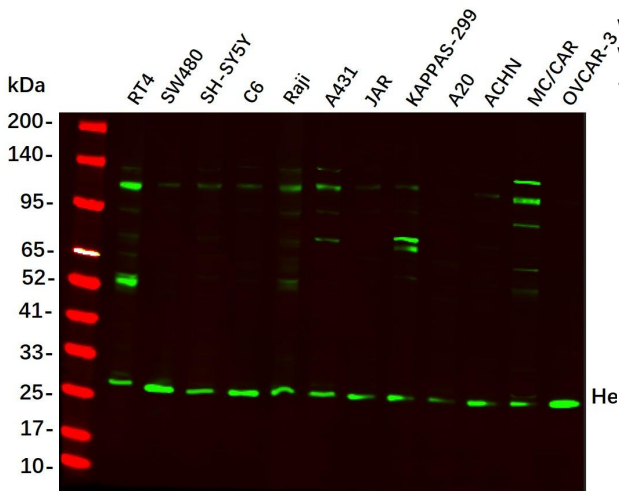
This protein belongs to the basic helix-loop-helix family of transcription factors. It is a transcriptional repressor of genes that require a bHLH protein for their transcription. The protein has a particular type of basic domain that contains a helix interrupting protein that binds to the N-box rather than the canonical E-box. [provided by RefSeq, Jul 2008],

### matters needing attention

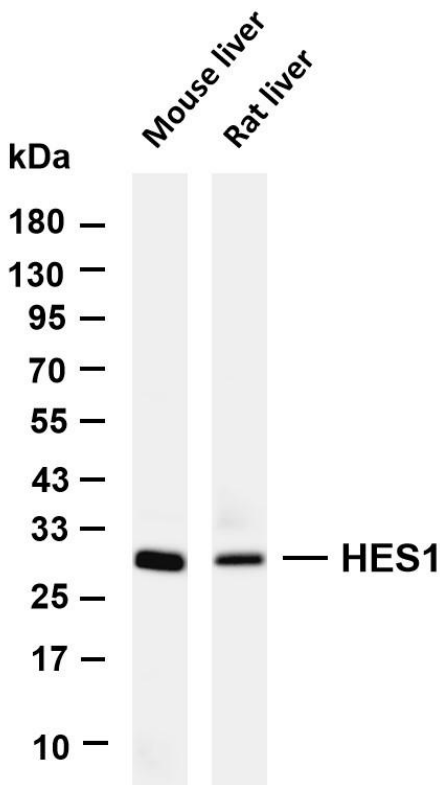
Avoid repeated freezing and thawing!

### Usage suggestions

This product can be used in immunological reaction related experiments. For more information, please consult technical personnel.



Western Blot analysis using various cell lysate, Proteins were separated by 4-20% SDS-PAGE, and the membrane was blotted with Hes1 Rabbit mAb diluted at 1:2000. Secondary :Dylight 800, Goat Anti Rabbit IgG(



Various whole cell lysates were separated by 4-20% SDS-PAGE, and the membrane was blotted with anti-HES1 antibody. The HRP-conjugated Goat anti-Rabbit IgG (H + L) antibody was used to detect the antibody. Lane 1: Mouse liver Lane 2: Rat liver Predicted band size: 30kDa Observed band size: 30kDa

